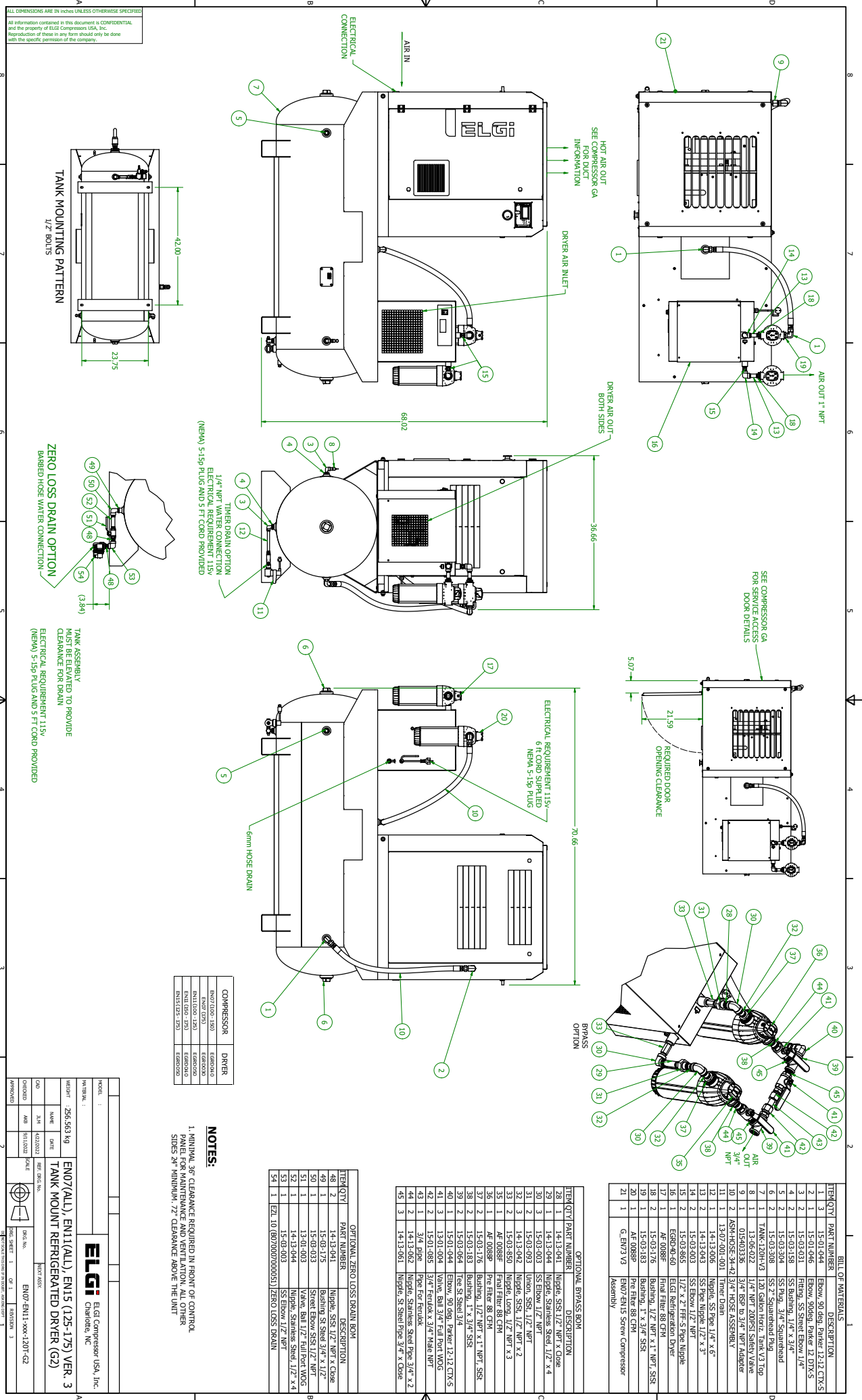


ALL DIMENSIONS ARE IN INCHES UNLESS OTHERWISE SPECIFIED  
 All information contained in this document is CONFIDENTIAL and the property of ELGI Compressor USA, Inc. Reproduction of these in any form should only be done with the specific permission of the company.



**BILL OF MATERIALS**

ITEM QTY	PART NUMBER	DESCRIPTION
1	15-01-044	Elbow, 90 deg, Parker 12-12 CTR-S
2	15-01-046	Elbow, 90deg, Parker 12 DTV-S
3	15-03-031	Fitting, SS Street Elbow 1/4"
4	15-03-158	SS Bushing, 1/4" x 3/4"
5	15-03-304	SS Nut, 3/4" Squarehead
6	15-03-304	SS Nut, 3/4" Squarehead
7	15-03-304	SS Nut, 3/4" Squarehead
8	15-03-304	SS Nut, 3/4" Squarehead
9	15-03-304	SS Nut, 3/4" Squarehead
10	15-03-304	SS Nut, 3/4" Squarehead
11	15-03-304	SS Nut, 3/4" Squarehead
12	15-03-304	SS Nut, 3/4" Squarehead
13	15-03-304	SS Nut, 3/4" Squarehead
14	15-03-304	SS Nut, 3/4" Squarehead
15	15-03-304	SS Nut, 3/4" Squarehead
16	15-03-304	SS Nut, 3/4" Squarehead
17	15-03-304	SS Nut, 3/4" Squarehead
18	15-03-304	SS Nut, 3/4" Squarehead
19	15-03-304	SS Nut, 3/4" Squarehead
20	15-03-304	SS Nut, 3/4" Squarehead
21	15-03-304	SS Nut, 3/4" Squarehead

**OPTIONAL BRASS BYPASS**

ITEM QTY	PART NUMBER	DESCRIPTION
28	14-13-041	Nipple, SS 1/2" NPT x Close
29	14-13-044	Nipple, Stainless Steel, 1/2" x 4
30	15-03-003	SS Elbow 1/2" NPT
31	15-03-093	Union, SS 1/2" NPT
32	14-13-042	Nipple, SS 1/2" NPT x 2
33	15-03-850	Nipple, Long, 1/2" NPT x 3
35	AF-0088R	Fltra Filter 88 CFM
36	15-03-115	Brass Tee, 1/2" NPT, SS
37	15-03-115	Brass Tee, 1/2" NPT, SS
38	15-03-115	Brass Tee, 1/2" NPT, SS
39	15-03-115	Brass Tee, 1/2" NPT, SS
40	15-01-044	Elbow, 90 deg, Parker 12-12 CTR-S
41	13-01-004	Valve, Ball 3/4" Full Port WOG
42	15-01-085	3/4" Ferrule x 3/4" Male NPT
43	3/4" pipe	Pipe For Ferrule
44	14-13-062	Nipple, Stainless Steel Pipe 3/4" x 2
45	14-13-061	Nipple, St. Steel Pipe 3/4" x Close

**OPTIONAL ZERO LOSS DRAIN BOX**

ITEM QTY	PART NUMBER	DESCRIPTION
48	14-13-041	Nipple, SS 1/2" NPT x Close
49	15-03-175	Bushing St. Steel 3/4" x 1/2"
50	15-03-033	Street Elbow SS 1/2" NPT
51	13-01-003	Valve, Ball 1/2" Full Port WOG
52	14-13-044	Nipple, Stainless Steel 1/2" x 4
53	15-03-003	SS Elbow 1/2" NPT
54	1	ELI 10 (80700/000051) ZERO LOSS DRAIN

COMPRESSOR	DRYER
EN07 (L03-120)	ED08020
EN107 (L25)	ED08020
EN1100 (L25)	ED08020
EN1107 (L25)	ED08020
EN1125 (25)	ED08020

**NOTES:**  
 1. MINIMAL 36" CLEARANCE REQUIRED IN FRONT OF CONTROL PANEL FOR MAINTENANCE AND VENTILATION. ALL OTHER SIDES 24" MINIMUM, 72" CLEARANCE ABOVE THE UNIT

**ELGI** ELGI Compressor USA, Inc.  
 Charlotte, NC

MODEL: EN07(ALL), EN11(ALL), EN15 (125-175) VER. 3  
 TANK MOUNT REFRIGERATED DRYER (G2)

WEIGHT: 256.563 kg  
 MATERIAL: EN07(ALL), EN11(ALL), EN15 (125-175) VER. 3

DATE: 15-03-2015  
 SCALE: 1:1

DESIGNED BY: EN07-EN11-EN15-120V-G2  
 CHECKED BY: EN07-EN11-EN15-120V-G2  
 APPROVED BY: EN07-EN11-EN15-120V-G2