



DRYTEC AMERICA

Taking Air Treatment to New Heights

SDM-US SERIES MODULAR DESSICANT COMPRESSED AIR DRYERS

*4921 Ohio Street
Michigan City, IN 46360
219-878-1550*

DRYTEC AMERICA

SDM-US SERIES

Compact - Easy - High Quality

The lightweight modular design desiccant dryer series brings a new concept in compressed air technology, offering total installation flexibility to meet specific needs. Drytec America's Modular Desiccant Dryers are less than half the weight and size of a traditional twin tower design, allowing even the largest models to be easily moved through a standard doorway. Drytec America's innovative Modular Air Dryers make it easier and more affordable than ever to deliver high-quality compressed air for virtually wherever it's needed.

Drytec America's Modular Desiccant Dryers have cosmetic beauty and can be located in clean, pleasant environments. Offered in sizes from 5 scfm to 1060 scfm with pressure dew point of -40° F and optional -100° F, these dryers are equipped with everything you need, requiring only air inlet/outlet connections. Using a highly engineered inlet and purge manifold design, Drytec America's proudly offers one of the lowest pressures drop desiccant dryer in the industry. Each SMD-US Series desiccant dryer includes 2 (two) pre-filters and 1 (one) post filter.



Standard Features

- Small footprint, lightweight, advanced compact design
- Corrosion protected aluminium construction
- Hassle-free, reliable electronic controls
- Can be floor, bench or wall mounted
- Quiet enough to be placed in any work environment
- Easy installation, easy maintenance

PLC Monitor

The standard mini-PLC is user friendly and shows the working action simultaneously. It is possible to get an alarm signal or remote control thanks to an easy access plug below the dryer. Dew point control and monitoring is possible with a dew point sensor.

The new Modular Desiccant Dryers combine proven traditional dryer principles with the latest technology to provide unsurpassed efficiency, flexibility and world-renowned Mikropor reliability for your critical dry air applications.

Space Saving Installation Options

Modular Desiccant Air Dryers can be mounted to the wall with easy-to-use mounting brackets to free up additional space and can also be secured to the ground very easily.

Options Available

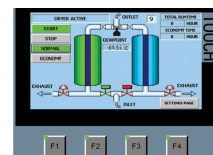
MMD-C-DCC Crouzet Basic DCC Cycle Control Purge Saver

- Saves Energy



Optional MMD-DCC DCC Cycle Control Purge Saver with Powerful PLC & HMI

- Saves Energy
- Wide Range of Control Features



SDM-US SERIES

Technical Specifications

| Model | Capacity | | Inlet - Outlet Connection Size | Length (inch) | Width (inch) | Height (inch) | Standard Voltage | Filters Included |
|----------|----------------------|--------|--------------------------------|---------------|--------------|---------------|----------------------------|------------------|
| | (Nm ³ /h) | (scfm) | | | | | | |
| SDM-5 | 10 | 5 | 1/2" NPT | 10.9 | 12.6 | 24.9 | 110-230V / 1 Ph / 50-60 Hz | X, Y, & P |
| SDM-10 | 20 | 10 | 1/2" NPT | 10.9 | 12.6 | 35.8 | 110-230V / 1 Ph / 50-60 Hz | X, Y, & P |
| SDM-15 | 25 | 15 | 1/2" NPT | 11.5 | 14.6 | 32.0 | 110-230V / 1 Ph / 50-60 Hz | X, Y, & P |
| SDM-20 | 35 | 20 | 1/2" NPT | 11.6 | 14.6 | 43.7 | 110-230V / 1 Ph / 50-60 Hz | X, Y, & P |
| SDM-25 | 45 | 25 | 1/2" NPT | 11.5 | 14.6 | 49.4 | 110-230V / 1 Ph / 50-60 Hz | X, Y, & P |
| SDM-30 | 50 | 30 | 1/2" NPT | 11.6 | 14.6 | 59.2 | 110-230V / 1 Ph / 50-60 Hz | X, Y, & P |
| SDM-40 | 70 | 40 | 1/2" NPT | 15.3 | 16.1 | 49.2 | 110-230V / 1 Ph / 50-60 Hz | X, Y, & P |
| SDM-50 | 85 | 50 | 1/2" NPT | 19.4 | 16.1 | 55.1 | 110-230V / 1 Ph / 50-60 Hz | X, Y, & P |
| SDM-60 | 100 | 60 | 1/2" NPT | 15.3 | 16.1 | 68.9 | 110-230V / 1 Ph / 50-60 Hz | X, Y, & P |
| SDM-75 | 130 | 75 | 1" NPT | 20.4 | 16.2 | 51.2 | 110-230V / 1 Ph / 50-60 Hz | X, Y, & P |
| SDM-100 | 170 | 100 | 1" NPT | 20.4 | 16.2 | 57.1 | 110-230V / 1 Ph / 50-60 Hz | X, Y, & P |
| SDM-120 | 200 | 120 | 1" NPT | 20.4 | 16.2 | 68.9 | 110-230V / 1 Ph / 50-60 Hz | X, Y, & P |
| SDM-180 | 300 | 180 | 1-1/2" NPT | 25.6 | 16.2 | 59.1 | 110-230V / 1 Ph / 50-60 Hz | X, Y, & P |
| SDM-240 | 400 | 240 | 1-1/2" NPT | 30.9 | 16.2 | 59.1 | 110-230V / 1 Ph / 50-60 Hz | X, Y, & P |
| SDM-340 | 575 | 340 | 2" NPT | 39.16 | 15.7 | 65.11 | 115-240 V / 1Ph / 50-60 Hz | X, Y, & P |
| SDM-400 | 680 | 400 | 2" NPT | 52.55 | 15.7 | 61.19 | 115-240 V / 1Ph / 50-60 Hz | X, Y, & P |
| SDM-500 | 850 | 500 | 2" NPT | 59.2 | 15.7 | 65.1 | 115-240 V / 1Ph / 50-60 Hz | X, Y, & P |
| SDM-590 | 1000 | 590 | 2" NPT | 65.9 | 15.7 | 69.1 | 115-240 V / 1Ph / 50-60 Hz | X, Y, & P |
| SDM-735 | 1250 | 735 | 3" NPT | 65.9 | 15.7 | 80.8 | 115-240 V / 1Ph / 50-60 Hz | X, Y, & P |
| SDM-890 | 1500 | 890 | 3" NPT | 72.63 | 15.7 | 80.8 | 115-240 V / 1Ph / 50-60 Hz | X, Y, & P |
| SDM-1060 | 1800 | 1060 | 3" NPT | 79.32 | 15.7 | 80.87 | 115-240 V / 1Ph / 50-60 Hz | X, Y, & P |

| Pressure Dew Point | Nominal Inlet Temp. | Max. Working Pressure | Max. Inlet Temp. | Max. Working Pressure | Max. Ambient Temp. |
|------------------------|---------------------|-----------------------|------------------|-----------------------|--------------------|
| -40 °F / -100 °F (opt) | 95 F | 100 psig | 122 °F | 230 psig | 122 °F |

*Given flows are at 100 psig pressure with reference to 68°F and 14 psi atmospheric air suction as per ISO7183.

Correction Factor for MMD Series

| Inlet Temp. (°F) | F1 | Pressure (psig) | F2 |
|------------------|------|-----------------|------|
| 70 | 1.12 | 50 | 0.56 |
| 80 | 1.09 | 60 | 0.65 |
| 90 | 1.06 | 70 | 0.74 |
| 100 | 1.00 | 80 | 0.83 |
| 105 | 0.93 | 90 | 0.91 |
| 110 | 0.86 | 100 | 1 |
| 115 | 0.80 | 110 | 1.06 |
| 120 | 0.75 | 120 | 1.08 |
| - | - | 130 | 1.12 |
| - | - | 140 | 1.16 |
| - | - | 150 | 1.20 |
| - | - | 175 | 1.29 |
| - | - | 200 | 1.37 |
| - | - | 225 | 1.45 |
| - | - | 230 | 1.52 |

| Grade | Filter Grade Explained | | |
|-----------------------------------|------------------------|------|-----|
| | X | Y | P |
| Particle Removal (Micron) | 1 | 0.01 | 5 |
| Max. Oil Carryover at 70°F (ppm) | 0 | 0.01 | 5 |
| Max. Recommended Temperature (°F) | 176 | 176 | 176 |
| Initial Pressure Loss (psi) | 1.1 | 1.45 | 0.6 |

