

DATA SHEET

**U 5.201**

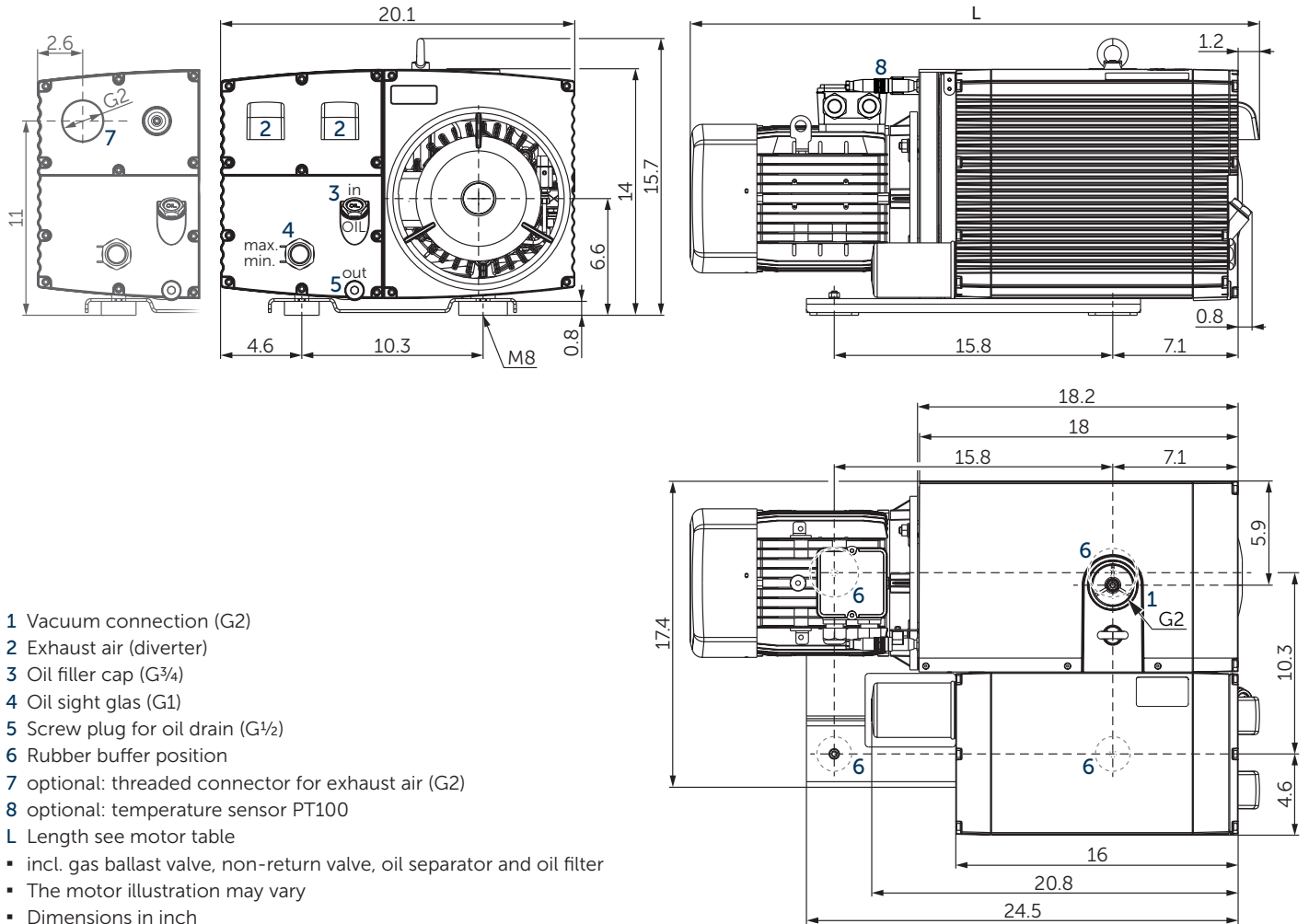
# ROTARY VANE- VACUUM PUMPS

oil-lubricated  
air-cooled

---

**MAKE IT BECKER.**





- 1 Vacuum connection (G2)
- 2 Exhaust air (diverter)
- 3 Oil filler cap (G<sup>3</sup>/<sub>4</sub>)
- 4 Oil sight glas (G1)
- 5 Screw plug for oil drain (G<sup>1</sup>/<sub>2</sub>)
- 6 Rubber buffer position
- 7 optional: threaded connector for exhaust air (G2)
- 8 optional: temperature sensor PT100
- L Length see motor table
- incl. gas ballast valve, non-return valve, oil separator and oil filter
- The motor illustration may vary
- Dimensions in inch

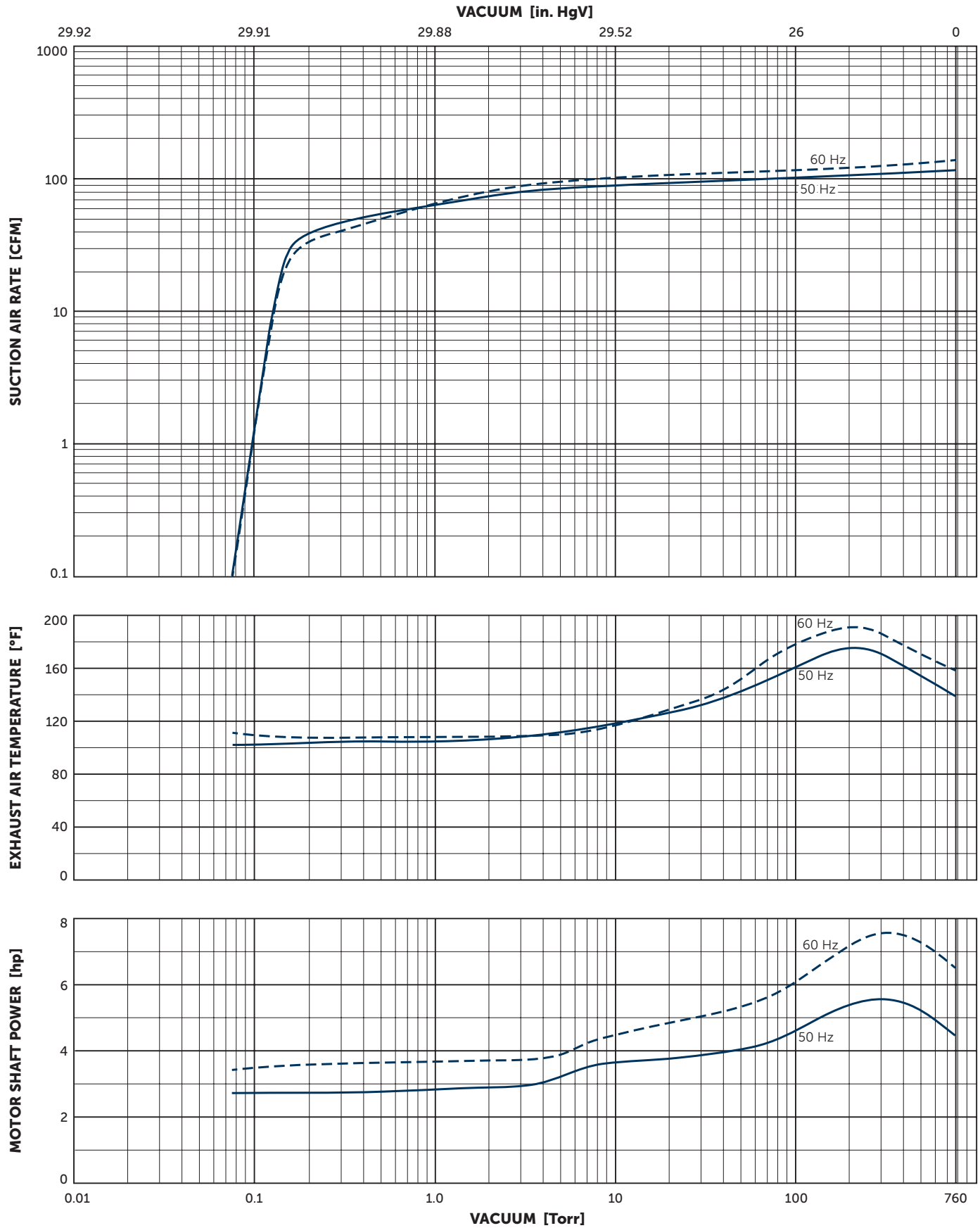
Nominal capacity		Vacuum for continous operation		Motors		Emission sound pressure level <sup>1)</sup>		Weight w/o motor	Oil <sup>2)</sup>
CFM		Torr		hp		dB(A)		lbs	U.S. gal.
50 Hz	60 Hz	50 Hz	60 Hz	50 Hz	60 Hz	50 Hz	60 Hz		
118	141	<0.075-75	<0.075-75	5.4	6.0/6.4	72	74	150	1.32
118	141	<0.075-300	<0.075-300	7.4	8.9	72	74	150	1.32

<sup>1)</sup> According to DIN EN ISO 11203, accuracy class of measurement: class 2, extended measurement uncertainty: 3 dB  
 39.4 inch distance, at medium load, both connection sides piped

<sup>2)</sup> Becker Lube: Synthetic Oil • Premium Synthetic Oil (PAO) • Food Grade Vacuum Pump Oil  
 ▪ Gas ballast valve: vacuum 0.75 Torr with opened gas ballast valve; water vapour tolerance max. 5.25 Torr;  
 water vapour capacity max. 0.079 U.S.gal./h (at 185°F operating temperature)

3~ Motors												L	
#	50 Hz					60 Hz				Version	Weight lbs	inch	
	hp	V	IE3	rpm	A	hp	V	rpm	A				
01	5.4	Δ230/Y400	IE3	1465	15.6/9.0	6.0	Δ265/Y460	IE3	1760	15.2/8.8	UL (E365362) • CSA IP 55 • ISO F • bimetal	88.2	33.6
							Δ230/Y400						
02	5.4	YY200/Y400	IE3	1465	18.0/9.0	6.4	YY230/Y460	IE3	1759	18.4/9.2	UL (E235514) • CSA CC329B IP 55 • ISO F • bimetal	88.2	33.6
							YY208	IE3	1753	18.7			
03	5.4	Δ200/Y350		1467	20.3/11.7	6.4	Δ200/Y380–400	IE3	1760	18.5/10.7–10.2	UL (E235514) • CSA CC329B IP 55 • ISO F • bimetal	88.2	33.6
							Δ200/Y350						
04						6.4	Δ400/Y690	IE3	1763	9.8/5.65	UL (E235514) • CSA CC329B IP 55 • ISO F • bimetal	88.2	33.6
05	7.4	Δ230/Y400	IE3	1468	20.7/12.0	8.9	Δ265/Y460	IE3	1762	20.6/11.9	IP 55 • ISO F • bimetal	116.9	34.9
							Δ230/Y400						
06	7.4	Δ400	IE3	1468	12.3	8.9	Δ460	IE3	1764	12.0	IP 55 • ISO F • bimetal	116.9	34.9
							Δ400						
07						8.9	YY230/Y460	IE3	1770	23.9/12.0	UL (E365362) • CSA CC3348 IP 55 • ISO F • bimetal	140.0	36.4
							YY208						
08	7.4	Δ200/Y350	IE3	1474	27.4/15.8	8.9	Δ200/Y380–400	IE3	1769	25.1/14.5–13.8	UL (E365362) • CSA IP 55 • ISO F • bimetal	140.0	36.4
							Δ200/Y350						

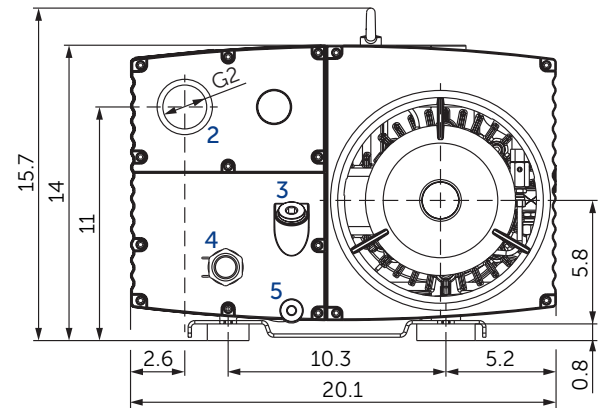
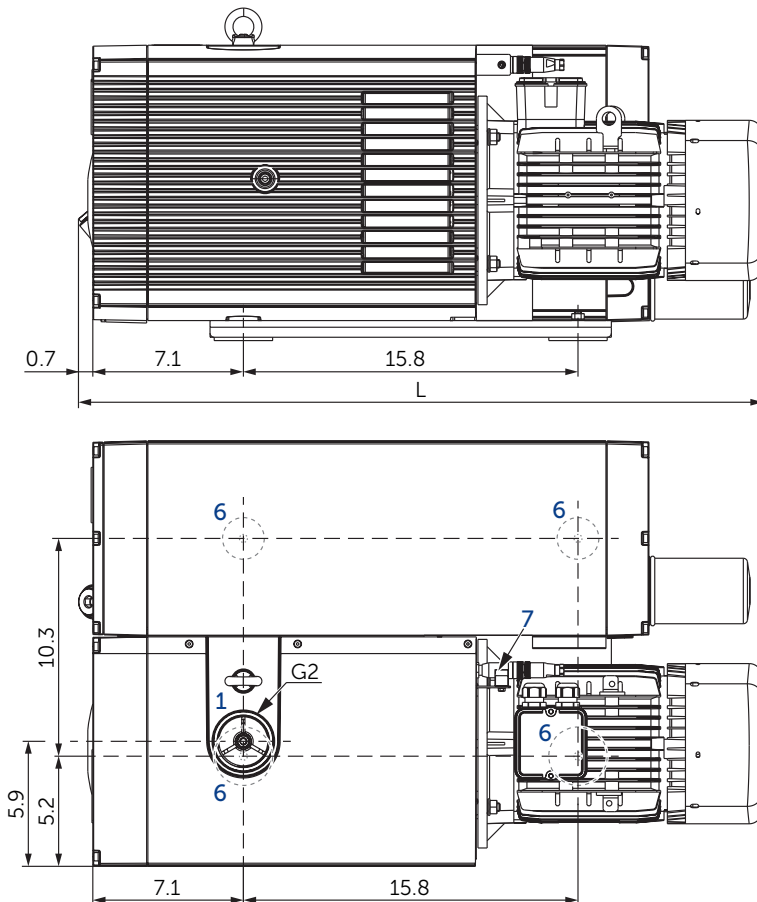
• Type plate data on current consumption and rotation speed of the motors may vary. Tolerance -1.5/+2% in each case.



Suction air rate refers to the intake pressure  
 Reference data (atmosphere): 0 In. HgV / 760 Torr, 68°F; Tolerance: ±10%

## + VARIANTS AND ACCESSORIES

- **VARIAR U 5.201**<sup>1)</sup> with VARIAIR frequency inverter
- **U 5.201 O2-PACK**<sup>1)</sup> for packaging with an overconcentration of oxygen
- **U 5.201/0-62 XL** with enlarged oil tank and high efficient triple stage oil separation, weight without motor: 172 lbs, oil quantity: 2.6 U.S. gal., further technical data, motors and characteristic curves like standard pump



### U 5.201/0-62 XL

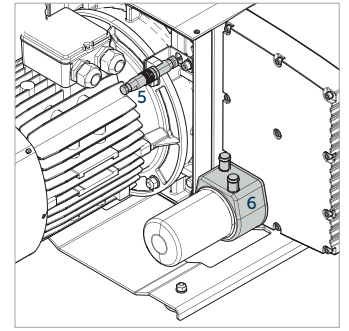
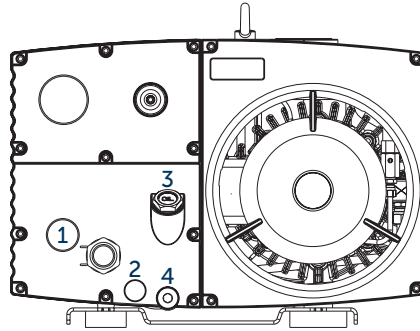
- 1 Vacuum connection (G2)
  - 2 Exhaust air connection (G2)
  - 3 Oil filler cap (G<sup>3</sup>/<sub>4</sub>)
  - 4 Oil sight glas (G1)
  - 5 Screw plug for oil drain (G<sup>1</sup>/<sub>2</sub>)
  - 6 Rubber buffer position
  - 7 Optional temperature sensor PT100
- L Length see motor table
- incl. gas ballast valve, non-return valve, oil separator and oil filter
  - The motor illustration may vary
  - Dimensions in inch

<sup>1)</sup> See separate data sheet  
 ▪ Combination options on request

**ACCESSORIES**

- External suction filter<sup>1)</sup>
- Oil: Becker Lube Synthetic Oil, Premium Synthetic Oil (PAO) and Food Grade Vacuum Pump Oil

- 1 Oil level switch<sup>1)</sup> (G1)
- 2 Oil temperature monitor<sup>1)</sup> (G<sup>1</sup>/<sub>2</sub>)
- 3 Maintenance indicator<sup>1)</sup> (G<sup>3</sup>/<sub>4</sub>) for oil separating elements
- 4 Ball valve (G<sup>1</sup>/<sub>2</sub>), with locking and hose connector 19 mm [0.75 inch]
- 5 Temperature sensor PT100
- 6 Water cooler U5.200-0-114.2<sup>1)</sup>



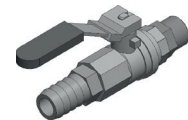
Oil level switch



Oil temperature monitor



Maintenance indicator



Ball valve

U 5.201 versions	Gas ballast valve		Threaded connector for exhaust air	Prepared for additional accessories (e.g. oil level switch; see above)
	Standard	for increased water vapour tolerance		
<b>U 5.201/0-00</b>	✓			
<b>U 5.201/0-01</b>	vacuum 0.75 Torr with opened gas ballast valve; water vapour tolerance max. 5.25 Torr;		✓ (G2)	
<b>U 5.201/0-02</b>	water vapour capacity max. 0.079 U.S.gal./h			✓
<b>U 5.201/0-03</b>	(at 185°F operating temperature)		✓ (G2)	✓
<b>U 5.201/0-04</b>		✓		
<b>U 5.201/0-05</b>	vacuum 2.25 Torr with opened gas ballast valve; water vapour tolerance max. 37.5 Torr;		✓ (G2)	
<b>U 5.201/0-06</b>	water vapour capacity max. 0.528 U.S.gal./h			✓
<b>U 5.201/0-07</b>	(at 185°F operating temperature)		✓ (G2)	✓

<sup>1)</sup> See separate data sheet  
 • Combination options on request



**MAKE IT BECKER.**