

DATA SHEET

U 5.166

ROTARY VANE VACUUM PUMPS

oil-lubricated
air-cooled

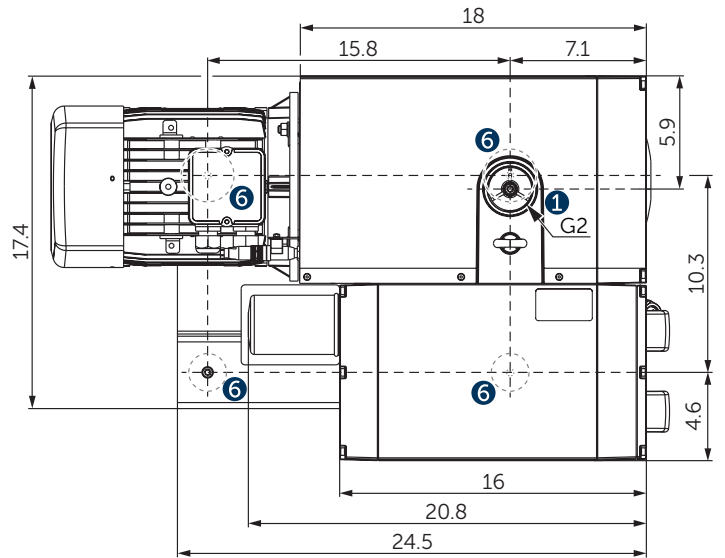
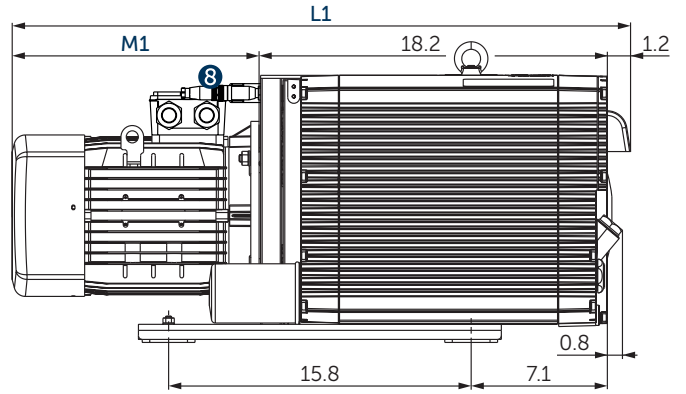
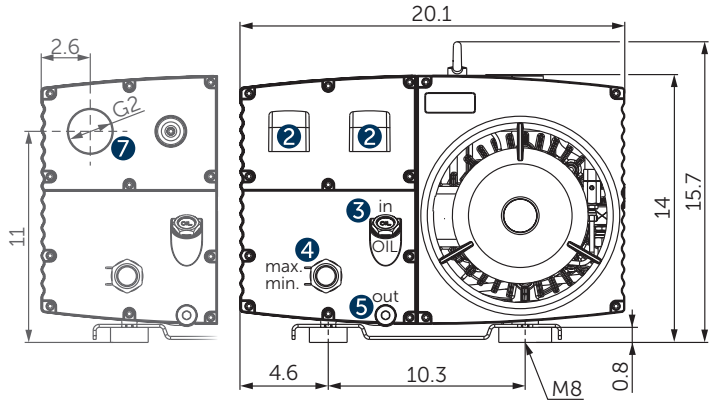
MAKE IT BECKER.

FASTEST PUMP-DOWN TIME

GAS BALLAST VALVE



HIGH WATER VAPOR TOLERANCE



1 Vacuum connection (G2)

2 Exhaust air (diverter)

3 Oil filler cap (G³/₄)

4 Oil sight glas (G1)

5 Screw plug for oil drain (G¹/₂)

6 Rubber buffer position

7 optional: threaded connector for exhaust air (G2)

8 optional: temperature sensor PT100

L Overall device length L₁ with motor. L₁ and M₁ are variable, see separate motor specification sheet.

- incl. gas ballast valve, non-return valve, oil separator and oil filter
- The motor illustration may vary
- Dimensions in inch

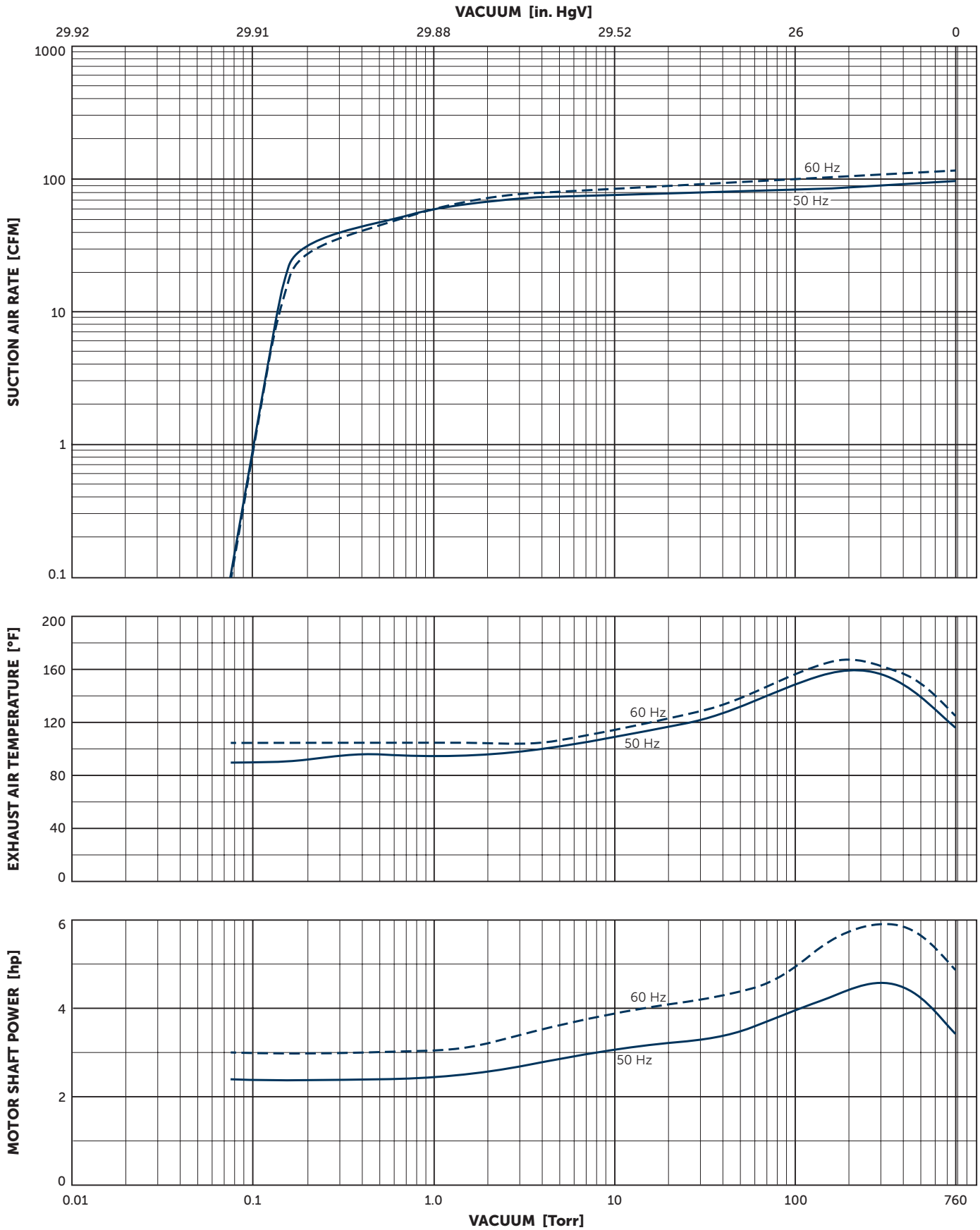
Nominal capacity		Vacuum for continous operation		Installed motor power		Emission sound pressure level ¹⁾		Weight w/o motor	Oil ²⁾
CFM		Torr		hp		dB(A)		lbs	U.S. gal.
50 Hz	60 Hz	50 Hz	60 Hz	50 Hz	60 Hz	50 Hz	60 Hz		
97	116	<0.075–75	<0.075–75	4.0	4.8	70	72	154.4	1.32
97	116	<0.075–300	<0.075–300	5.4	6.0–6.4	70	72	154.4	1.32

¹⁾ According to DIN EN ISO 11203, accuracy class of measurement: class 2, extended measurement uncertainty: 3 dB
39.4 inch distance, at medium load, both connection sides piped

²⁾ Becker Lube: Synthetic Oil • Premium Synthetic Oil (PAO) • Food Grade Vacuum Pump Oil

▪ Reference data (atmosphere): 0 In. HgV / 760 Torr, 68°F; Tolerance: ±10%

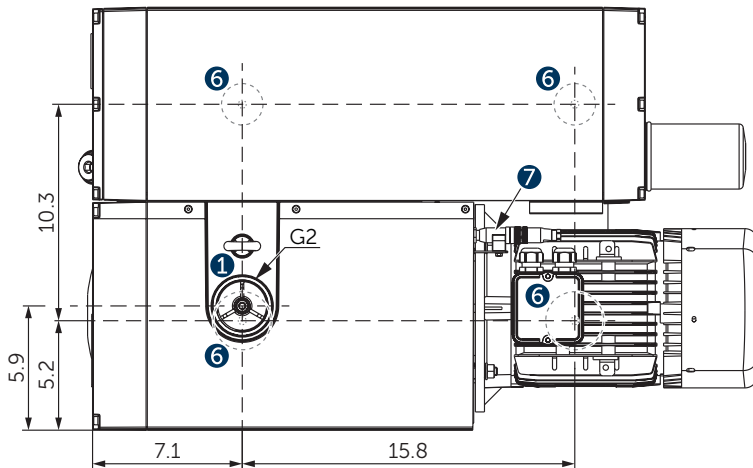
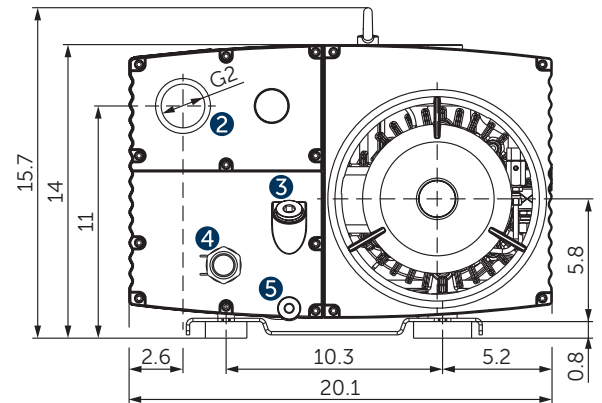
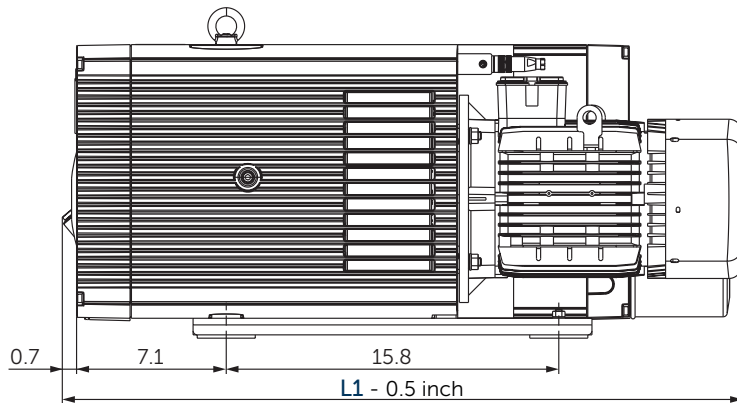
▪ Gas ballast valve: vacuum 0.75 Torr with opened gas ballast valve; water vapour tolerance max. 5.25 Torr; water vapour capacity max. 0.079 U.S.gal./h (at 185°F operating temperature)



Suction air rate refers to the intake pressure
 Reference data (atmosphere): 0 In. HgV / 760 Torr, 68°F; Tolerance: ±10%

+ VARIANTS AND ACCESSORIES

- **U 5.166 O2-PACK¹⁾** for packaging with an overconcentration of oxygen
- **U 5.166/0-62 XL** with enlarged oil tank and high efficient triple stage oil separation, weight without motor: 176.4 lbs, oil quantity: 2.6 U.S. gal., further technical data, motors and characteristic curves like standard pump



U 5.166/0-62 XL

- 1 Vacuum connection (G2)
 - 2 Exhaust air connection (G2)
 - 3 Oil filler cap (G³/₄)
 - 4 Oil sight glas (G1)
 - 5 Screw plug for oil drain (G¹/₂)
 - 6 Rubber buffer position
 - 7 Optional temperature sensor PT100
- L Length see motor table
- incl. gas ballast valve, non-return valve, oil separator and oil filter
 - The motor illustration may vary
 - Dimensions in inch

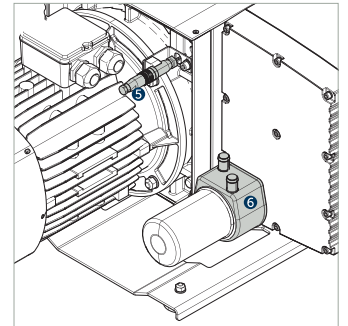
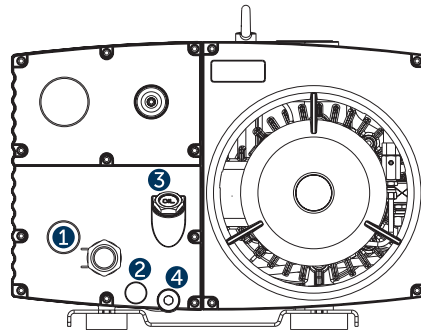
¹⁾ See separate data sheet

- Combination options on request

ACCESSORIES

- External suction filter¹⁾
- Oil: Becker Lube Synthetic Oil, Premium Synthetic Oil (PAO) and Food Grade Vacuum Pump Oil

- 1 Oil level switch¹⁾ (G1)
- 2 Oil temperature monitor¹⁾ (G $\frac{1}{2}$)
- 3 Maintenance indicator¹⁾ (G $\frac{3}{4}$) for oil separating elements
- 4 Ball valve (G $\frac{1}{2}$), with locking and hose connector 19 mm [0.75 inch]
- 5 Temperature sensor PT100
- 6 Water cooler U5.200-0-114.2¹⁾



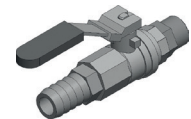
Oil level switch



Oil temperature monitor



Maintenance indicator



Ball valve

U 5.166 versions	Gas ballast valve		Threaded connector for exhaust air	Prepared for additional accessories (e.g. oil level switch; see above)
	Standard	for increased water vapour tolerance		
U 5.166/0-00	✓			
U 5.166/0-01	vacuum 0.75 Torr with opened gas ballast valve; water vapour tolerance max. 5.25 Torr;		✓ (G2)	
U 5.166/0-02	water vapour capacity max. 0.079 U.S.gal./h			✓
U 5.166/0-03	(at 185°F operating temperature)		✓ (G2)	✓
U 5.166/0-04		✓		
U 5.166/0-05		vacuum 2.25 Torr with opened gas ballast valve; water vapour tolerance max. 37.5 Torr;	✓ (G2)	
U 5.166/0-06		water vapour capacity max. 0.528 U.S.gal./h		✓
U 5.166/0-07		(at 185°F operating temperature)	✓ (G2)	✓

¹⁾ See separate data sheet
 • Combination options on request



MAKE IT BECKER.

HOMEPAGE
U SERIES



DOWNLOAD
MOTOR SPECS.



ONLINE SHOP



www.beckerpumps.com
www.becker-international.com

