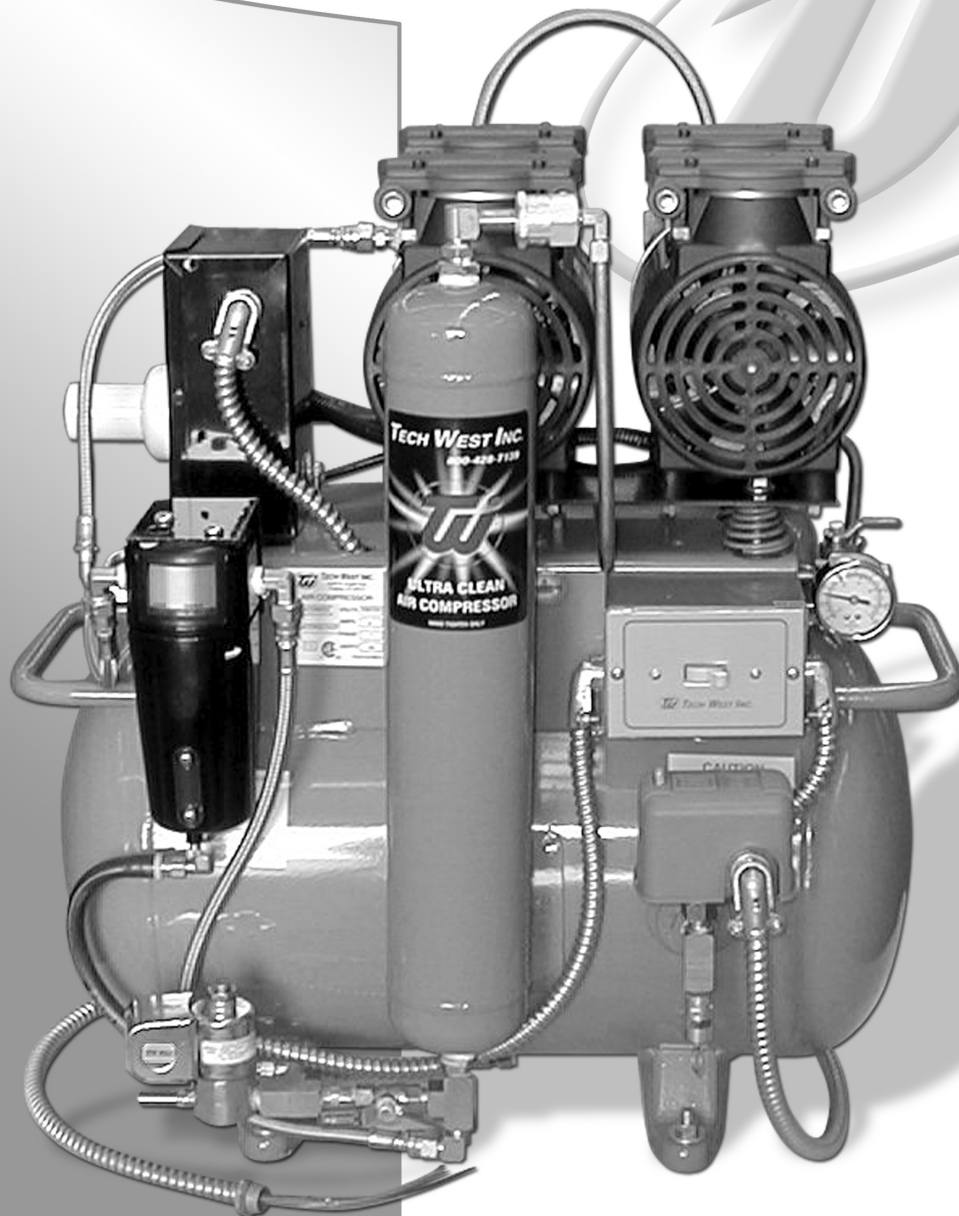


# ULTRA CLEAN ROCKY COMPRESSOR



## INSTALLATION AND SERVICE MANUAL

Revised 4-15

 **TECH WEST INC.**

Manufacturers of Dental Vacuum  
and Air Systems

2625 N. Argyle Ave. • Fresno, CA 93727  
(559) 291-1650 • (800) 428-7139 • FAX (559) 348-9677



# **ULTRA CLEAN ROCKY COMPRESSOR**

## **INSTALLATION AND SERVICE MANUAL**

This manual is for the installation and service of Tech West's Ultra Clean Rocky Compressors.

### **CONTENTS**

Installation	
Location Requirements	2
Figure 1: Wire and Breaker Sizes	2
Ultra Clean Rocky Installation Steps	3
Ultra Clean Rocky Compressor Connections	4
Ultra Clean Rocky Start Up	5
Ultra Clean Rocky Maintenance	6
Ultra Clean Rocky Compressor Motor Assembly Breakdown	7-8
Coalescing Filter Assembly Breakdown	9
Tank Breakdown	10
Desiccant Dryer Parts Breakdown	11
Gauge and Moisture Indicator Assembly Breakdown	12
Wiring Diagram	13
Dual Ultra Clean Rocky Compressor Assembly	14
Triple Ultra Clean Rocky Compressor Assembly	15
Quad Ultra Clean Rocky Compressor Assembly	16
Maintenance Schedule	17

### **TROUBLE SHOOTING**

Dual Rocky Compressor Trouble Shooting	18-19
Triple Rocky Compressor Trouble Shooting	20-21
Air Line Sizing Chart	22
Maintenance/Service and notes	23-25

# ULTRA CLEAN ROCKY COMPRESSOR INSTALLATION

## 1. ROCKY COMPRESSOR LOCATION REQUIREMENTS

The Ultra Clean Rocky Compressor location should be level, accessible and well ventilated.

If the Ultra Clean Rocky Compressor will be located in a confined space, provide adequate ventilation.

### Electrical

- (1) Line voltage must be within the limits of Figure 1 below. (Install a “buck-boost transformer” if line voltage is not between these values.) Circuit breaker switches must be 20 - 30 amp depending on model and voltage necessary.
- (2) Local code may require you to provide a quick disconnect (safety switch) for the compressor.
- (3) See Figure 1 below for breaker size and line voltage.

**CAUTION - Voltage must be 208/240 V or motor damage may occur.**

**CAUTION - Voltage must be 110/120 V or motor damage may occur.**

**Figure 1: Recommended Wire and Breaker Size**

Model	Voltage	Amperage	Wire Size (Gauge)	Recommended Breaker Size
<b>Dual Head Compressors</b>				
ACOR2D1	110/120	11	12	20
ACOR2D2	208/230	8	12	20
ACOR2D1Q	110/120	11	12	20
ACOR2D2Q	208/230	8	12	20
<b>Triple Head Compressors</b>				
ACOR3T2	208/230	12	12	20
ACOR3T2Q	208/230	12	12	20
<b>Quad Head Compressors</b>				
ACOR4Q2	208/230	16	10	30

# ULTRA CLEAN ROCKY COMPRESSOR INSTALLATION

## 2. INSTALLATION STEPS

This dental compressor should only be installed by qualified personnel. Should any questions arise during the installation, call Tech West Technical Support between the hours of 7:00 a.m. to 4:00 p.m. (Pacific Standard Time).

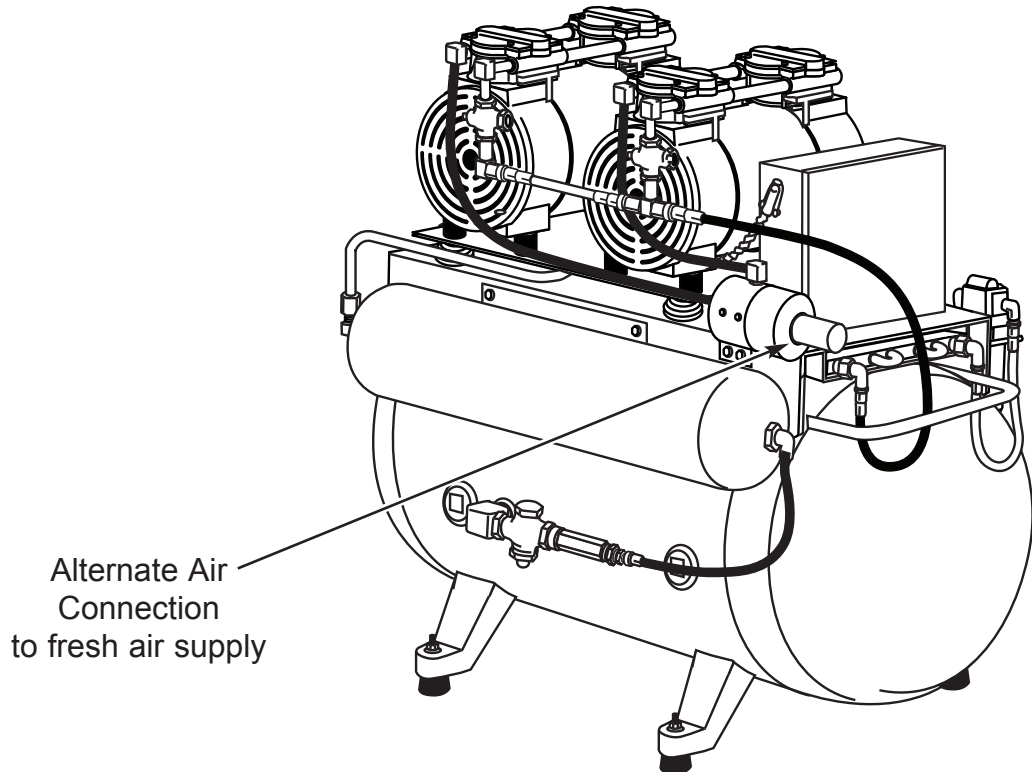
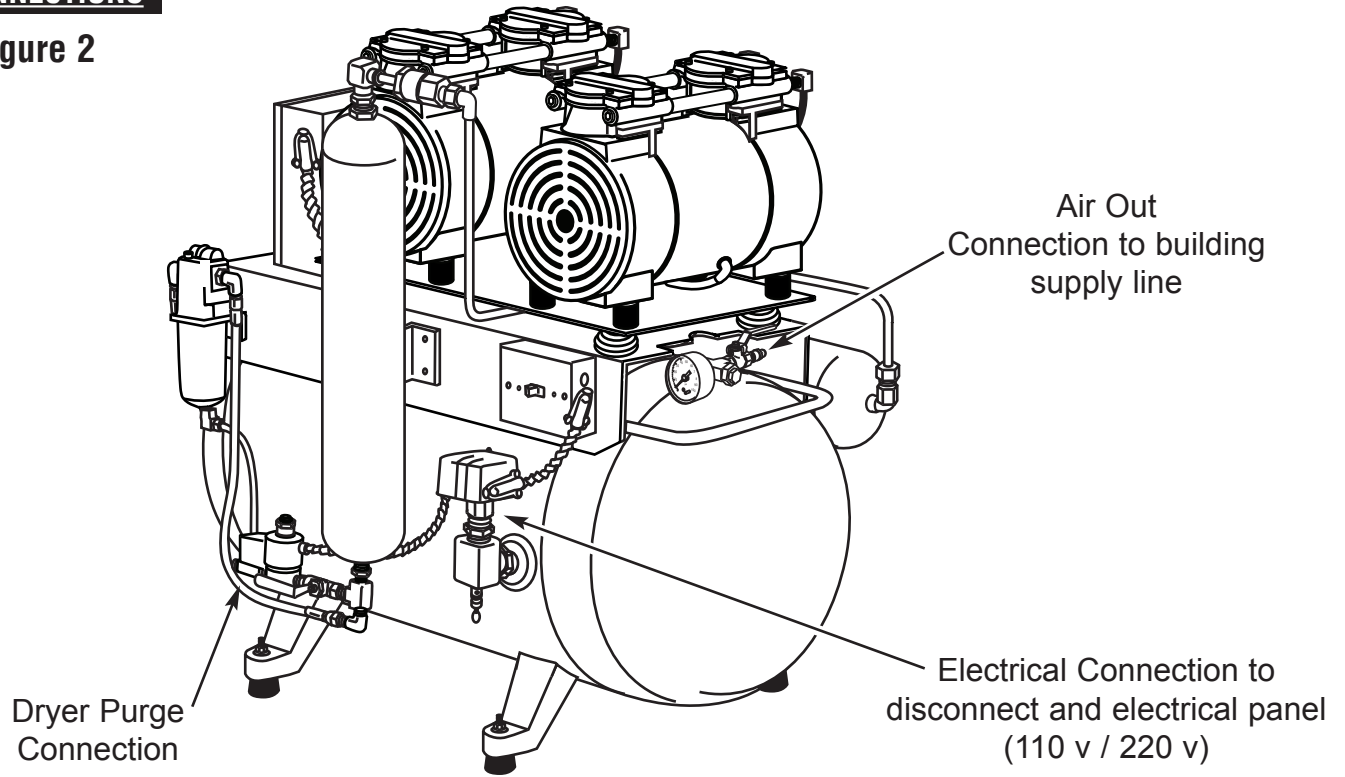
Place the compressor in a clean, dry, well ventilated area, on a solid, level surface. Consider sound level and insulate as needed. Be sure that adequate ventilation is available as the compressor is air cooled. Ambient temperature in the equipment room should be within the temperature range of 40 degrees Fahrenheit minimum to 100 degrees Fahrenheit maximum.

- (a) Check the shipping carton for damage. This could detect damage to the unit which might otherwise be overlooked. Remove cardboard shipping carton.
- (b) Remove the Oilless Compressor from its shipping skid. Inspect the unit for damage. Oilless Compressors are shipped bolted to a pallet. This pallet is intended for shipping only and should be discarded.
- (c) Remove installation kit attached to pallet. It should contain the following:
  - (4) Isolation Feet
  - (1) Alternate Air Hookup Hose
  - (1) 5' Flexible Air Hose
- (d) Install isolation feet on tank legs.
- (e) Move compressor into place and level by observing bubble level on compressor platform.
- (f) Wiring instructions:
  - (1) Have all electrical connections made by qualified personnel only. All connections should be in accordance with local codes.
  - (2) Use the chart on page 1 to help determine the proper line and breaker size for the unit that is being installed.
- (g) Install the air line from the compressor tank to the building supply.
- (h) Install the 1" flex alternate air hose from the compressor to a fresh air supply.

# ULTRA CLEAN ROCKY COMPRESSOR INSTALLATION

## 3. CONNECTIONS

Figure 2



# ULTRA CLEAN ROCKY COMPRESSOR INSTALLATION

## 4. SAFETY PRECAUTIONS

- Keep fingers, foreign objects and clothing free from rotating parts and do not touch hot surfaces.
- Never attempt to service an operating unit.
- Isolate unit from system pressure and relieve backpressure before servicing
- Disconnect all power before servicing. The thermal protector in single phase motors automatically starts motor when device resets.

**USE OF THIS PRODUCT IN OR NEAR EXPLOSIVE ATMOSPHERES, OR FOR PUMPING MIXTURES OTHER THAN ATMOSPHERIC AIR MAY CAUSE AN EXPLOSION OR FIRE, RESULTING IN PERSONAL INJURY OR DEATH.**

## 5. START-UP STEPS

- (a) Make sure the shut-off valve from the compressor tank is closed.
- (b) Turn the breaker from the panel to the "ON" position.
- (c) Turn power "ON" from the toggle switch on the compressor. Compressor should run quietly and vibration free. The storage tank should start to build pressure.
- (d) The compressor will run until the pressure gauge reads 100 psi. The compressor then will automatically shut off and the dryer will purge with a quick blast of air.
- (e) Using soapy water, check the compressor plumbing hook ups for leaks. Repair leaks if needed.
- (f) Pressure test the entire plumbing system for leaks. Use the storage tank pressure gauge to monitor a pressure drop. After the plumbing system has been pressurized for 30 minutes, re-check the gauge for pressure drop. If there is a drop in pressure, find and repair all leaks in the office plumbing.
- (g) Complete and mail in the warranty card for the compressor within ten days of installation.

**AIR LEAKS ARE THE MAIN CAUSE OF COMPRESSOR FAILURES.**

# ULTRA CLEAN ROCKY COMPRESSOR INSTALLATION

## 6. GENERAL SERVICE INFORMATION

For parts and service on Rocky series products contact the nearest authorized Tech West distributor. To expedite appropriate service, be prepared to provide the unit model number, identification number, and serial number found on the nameplate located on the front of the unit motor.

Component life operating at continuous duty & maximum pressure will shorten the life of the rings and skirts. It is difficult to predict due to many conditions which directly influence wear. Some of these conditions may include ambient air temperature, air cleanliness, operating pressure, piston stroke on the particular model being utilized, duty cycle, maintenance of filters, etc.

Because of these various factors it is appropriate to generalize on component wear life and choose some conservative estimates for most standard applications.

With these conditions in mind, we recommend the following preventative maintenance schedule.

<b>RECOMMENDED MAINTENANCE FOR ROCKY MODELS</b>	<b>HOURS</b> Cont. Duty Maximum Pressure	<b>TIME</b> Based on 100% Duty Cycle
Minor Service Kits, Piston Cups & Valves, Skirts, Etc.	8,000 Hours	12 months
Major Replacement Kit, Piston & Rod Assemblies	12,000 Hours	18 months
Replace inlet Filter	4,000 Hours	6 months

## 7. PERIODIC SERVICING

### MONTHLY SERVICING

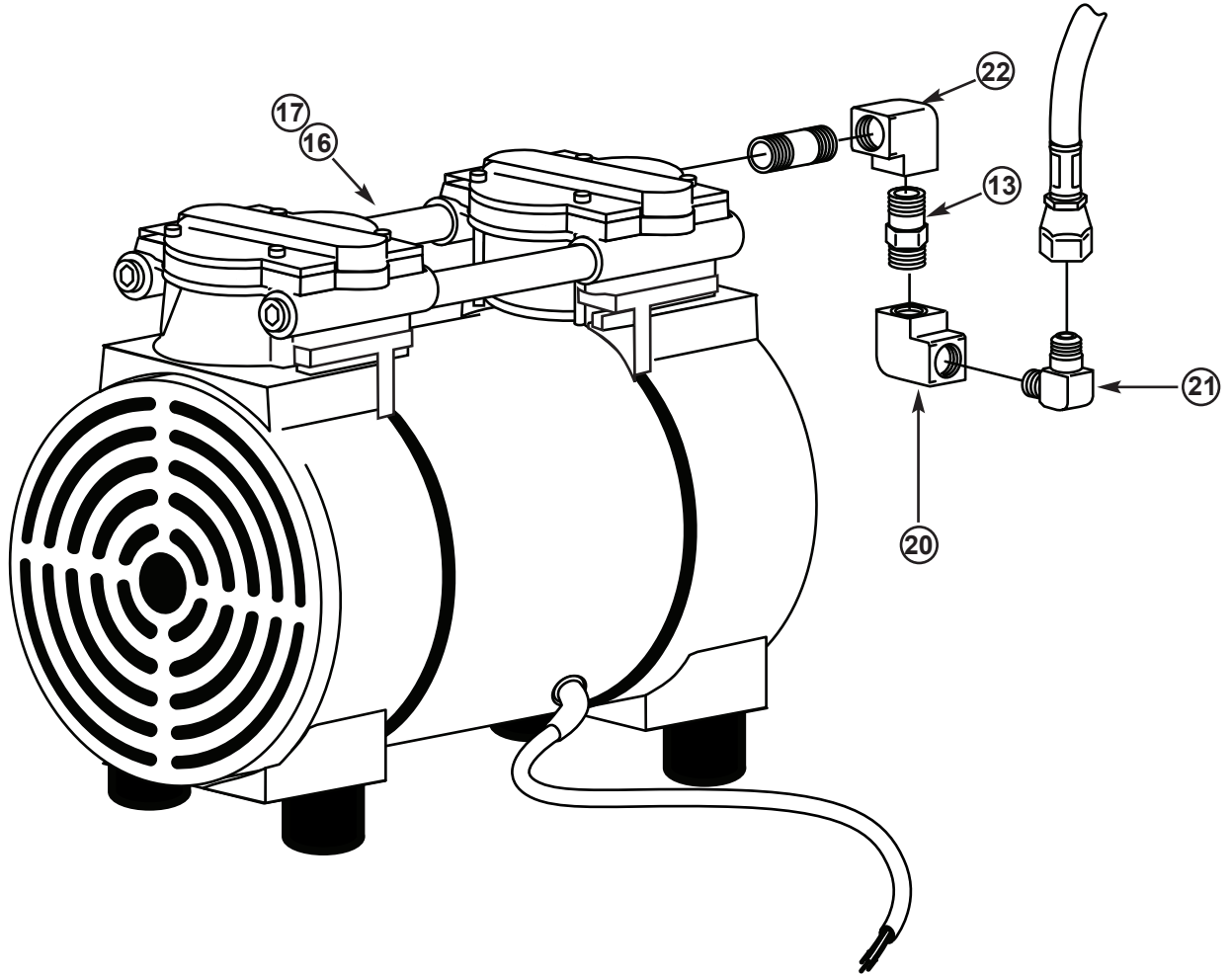
- (a) Remove the purge bucket and empty as needed
- (b) Crack the drain petcock on the bottom of the storage tank to check for water and drain if needed.
- (c) Check moisture indicator to see that it is still "BLUE". If it is pink, it is time to service the air dryer.
- (d) Check pump-up times of the compressor.
- (e) Check intake air supply filters. Replace filters as needed.

### YEARLY SERVICING

- (a) Repeat all of the monthly servicing.
- (b) Replace the dessicant air dryer. (Part #: RDC-100)
- (c) Replace the alternate air filter. (Part #: TIF-100)
- (e) Replace the moisture indicator on the compressor. (Part #: MI -100)
- (f) Check the coalescing filter and change if needed. (Part #: CFEO-375)



# ULTRA CLEAN ROCKY COMPRESSOR PARTS LIST

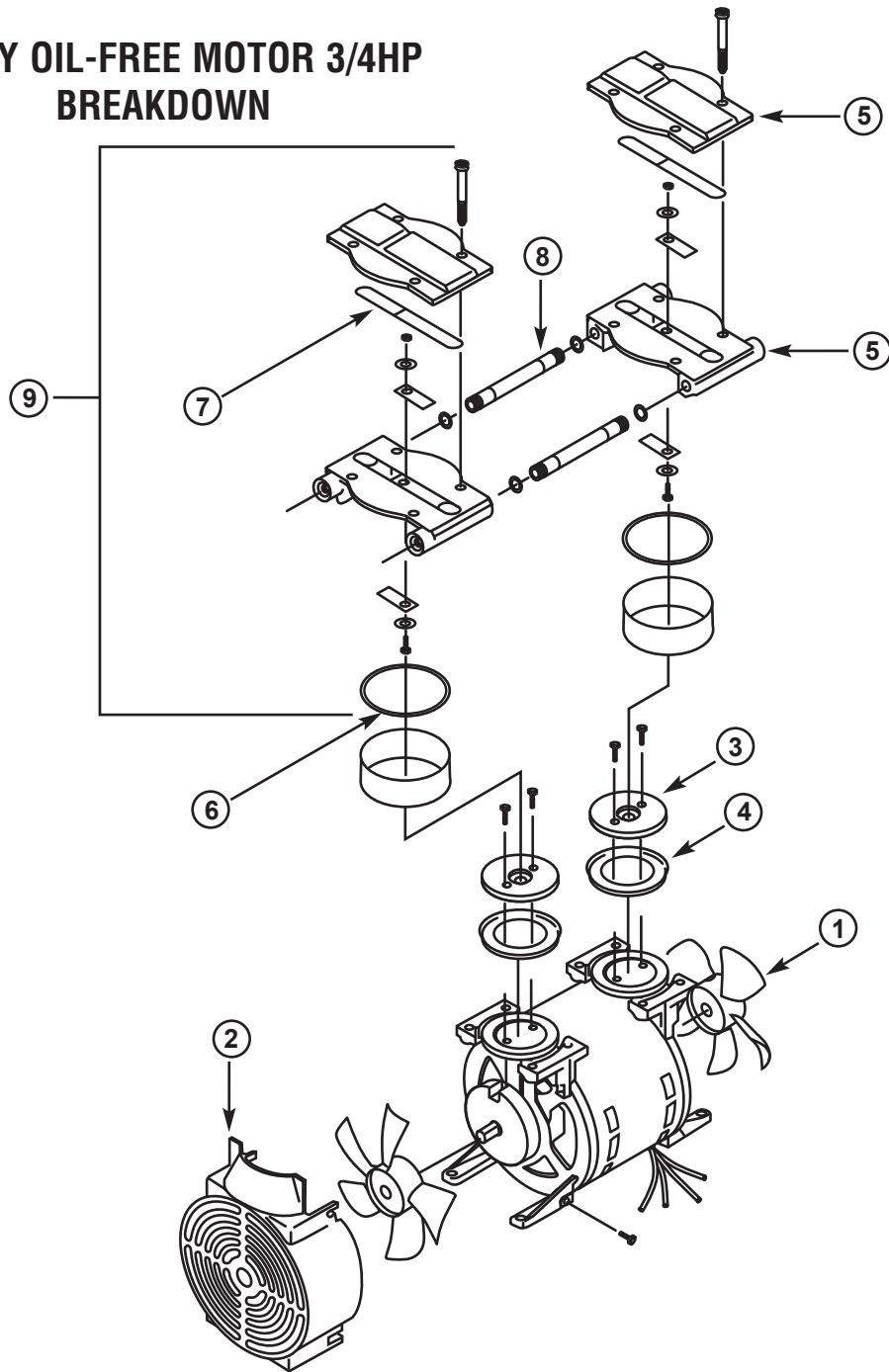


## ROCKY OIL-FREE COMPRESSOR MOTOR

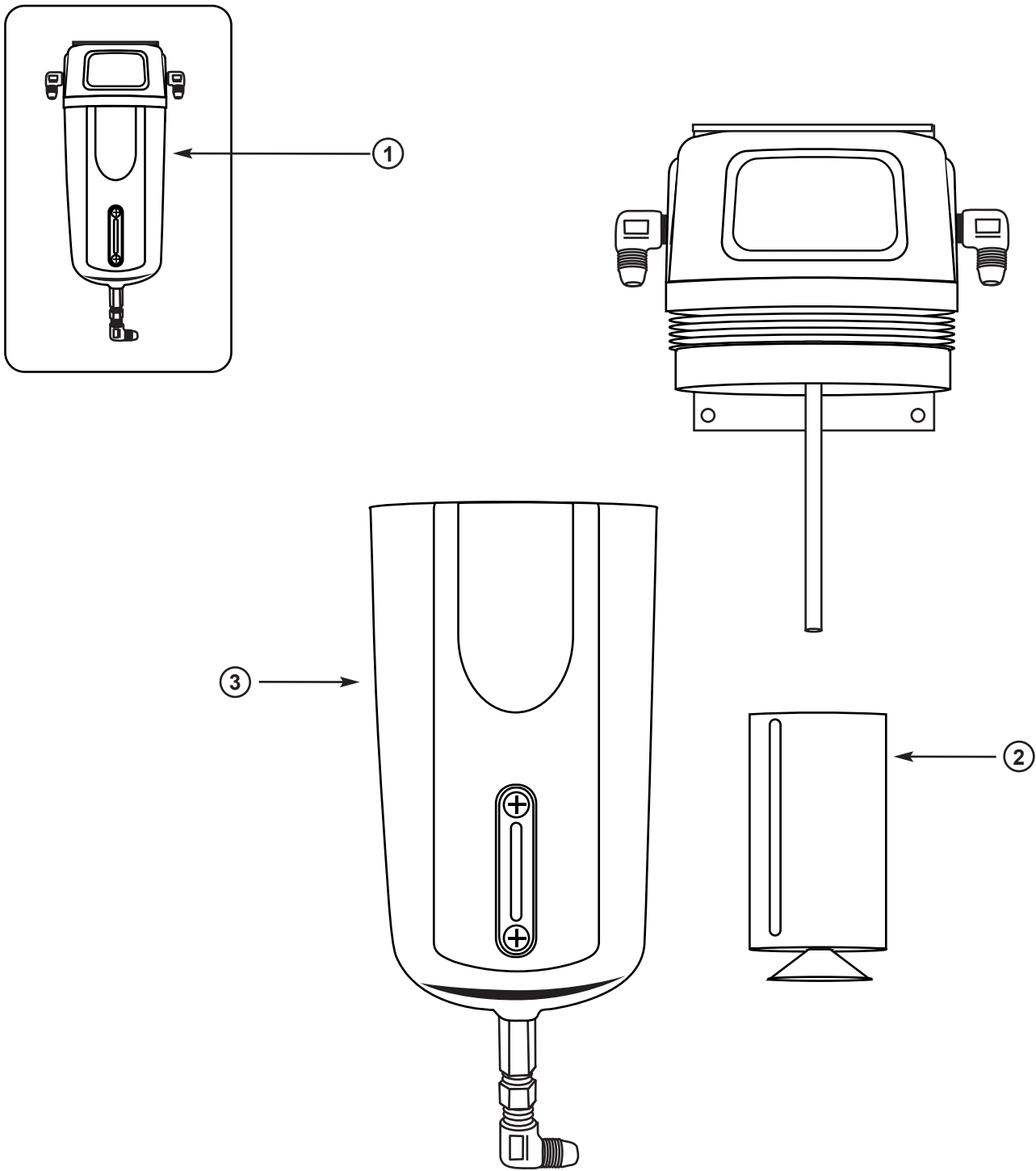
KEY	PART NO.	DESCRIPTION	UNIT
13	CV-250D	1/4 CHECK VALVE	1
16	GOM-075R-115	OILLESS MOTOR 3/4 HP 115V	1-4
17	GOM-075R-230	OILLESS MOTOR 3/4 HP 230V	1
20	BE-4	BRASS ELBOW 1/4"	2
21	FE-4-6	BRASS FLAIR ELBOW 1/4" X 3/8	1
22	BN-1.50	BRASS NIPPLE 1/4" X 1 1/2	1



# ROCKY OIL-FREE MOTOR 3/4HP BREAKDOWN

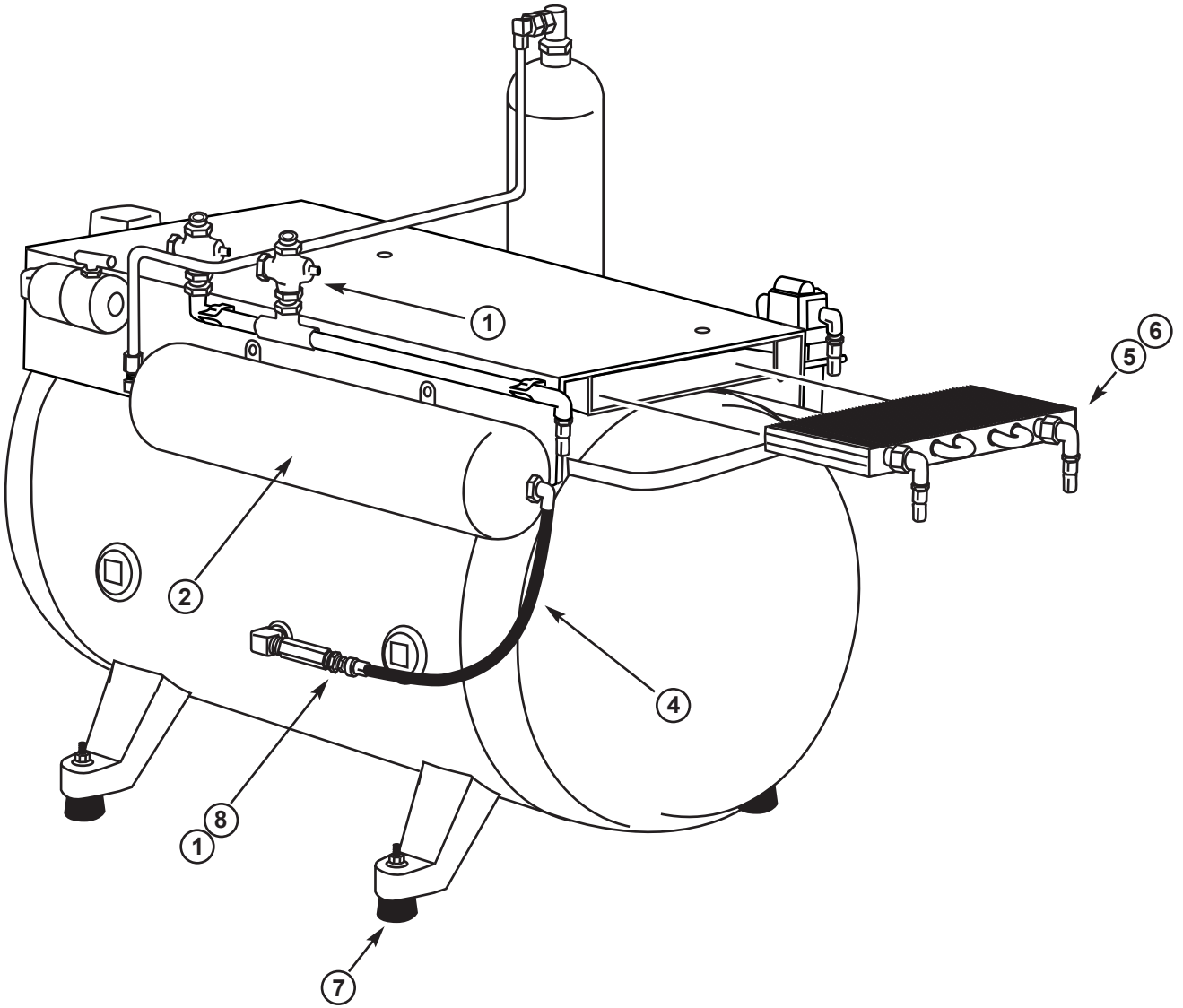


KEY	PART NO.	DESCRIPTION	UNIT
1	RCF-100	COOLING FAN	2
2	RFS-100	FAN SHROUD	2
3	RRP-100	RETAINER PLATE	2
4	RPC-100	PISTON CUP	2
5	RVS-100	VALVE PLATE SET	2
6	RCOR-100	CYLINDER O-RING	2
7	RHOR-100	HEAD O-RING	2
8	RCT-100	CROSS OVER TUBE	2
9	RCVS-100	COMPLETE VALVE PLATE ASSEMBLY	2



## ROCKY FILTER ASSEMBLY

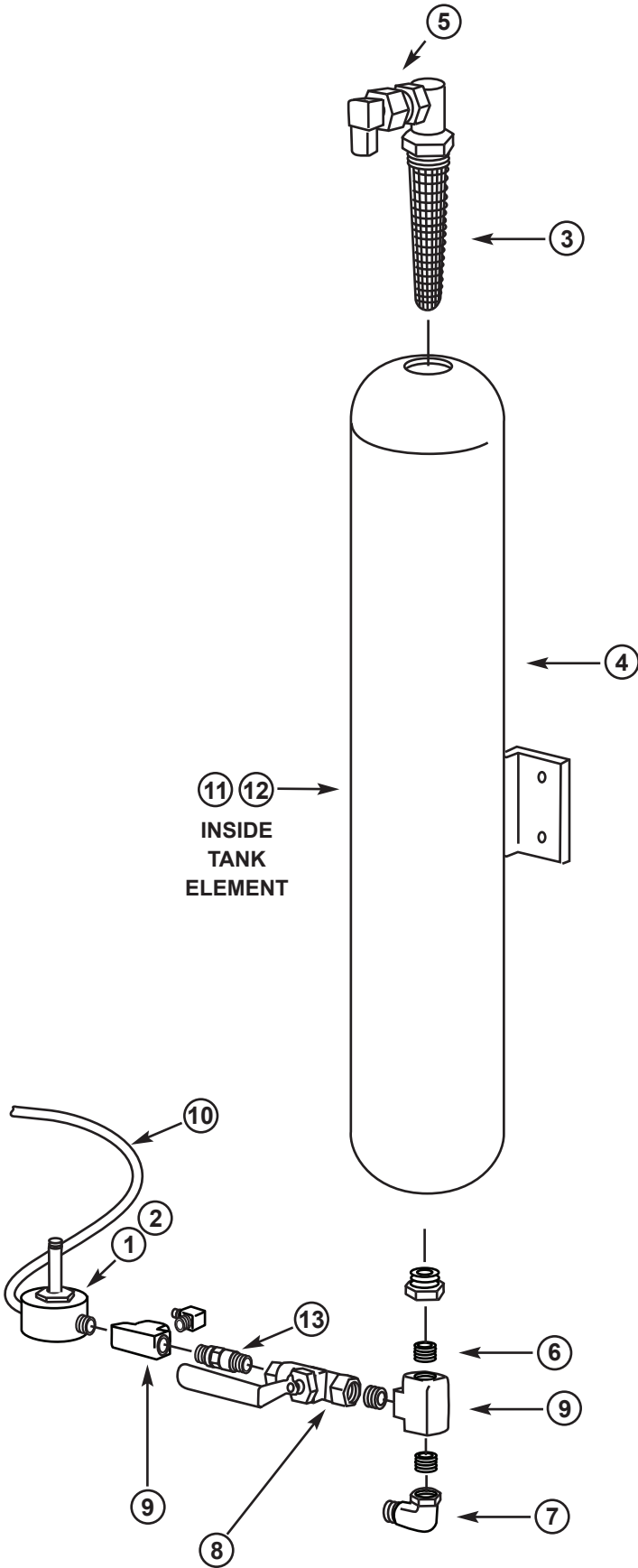
KEY	PART NO.	DESCRIPTION	UNIT
1	CFAO-375	COALESCING FILTER ASSEMBLY 3/8	1
2	CFEO-375	COALESCING FILTER ELEMENT 3/8	1
3	CFBP-375	COALESCING FILTER BOWL	1



## ROCKY REAR VIEW TANK ASSEMBLY AND PARTS LIST

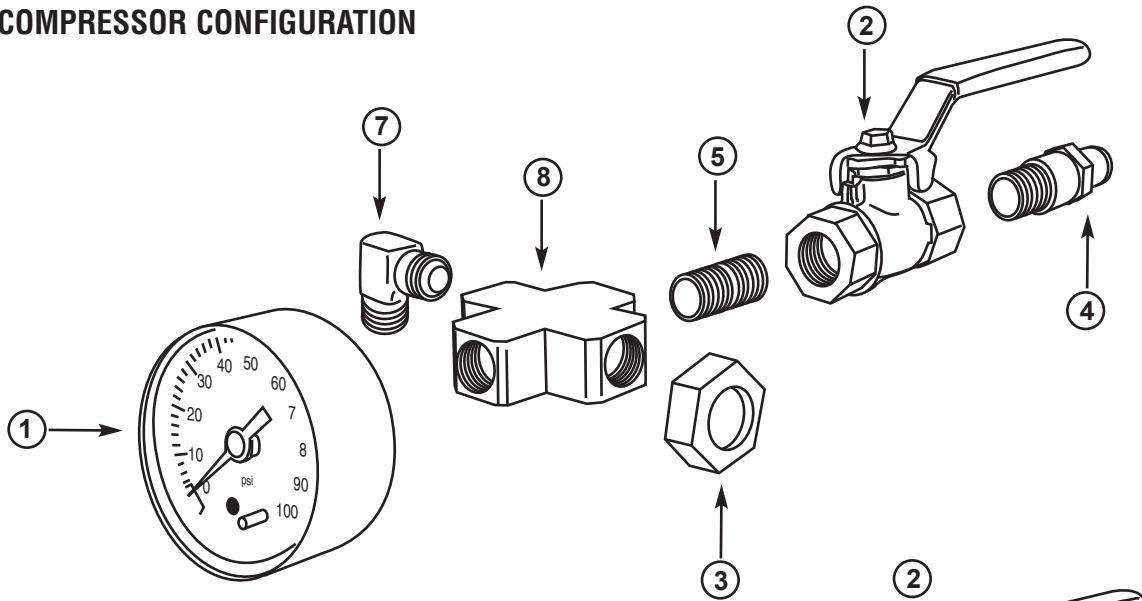
KEY	PART NO.	DESCRIPTION	UNIT
1	CV-375D-100	3/8 CHECK VALVE MALE TO FEMALE CONNECTION	1-4
2	CPT-100	COMPRESSOR PURGE TANK	1
4	HA-10-250	1/4 HOSE ASSEMBLY - 10" LONG	1
5	DPC-1	DRYER PRE COOLER DUAL COMPRESSOR	1
6	DPC-2	DRYER PRE COOLER TRIPLE & QUAD COMPRESSOR	1
7	RFV-100	RUBBER MOUNTING FEET	4
8	CV-500D-100	1/2 CHECK VALVE	1

# ROCKY DESICCANT AIR DRYER ASSEMBLY

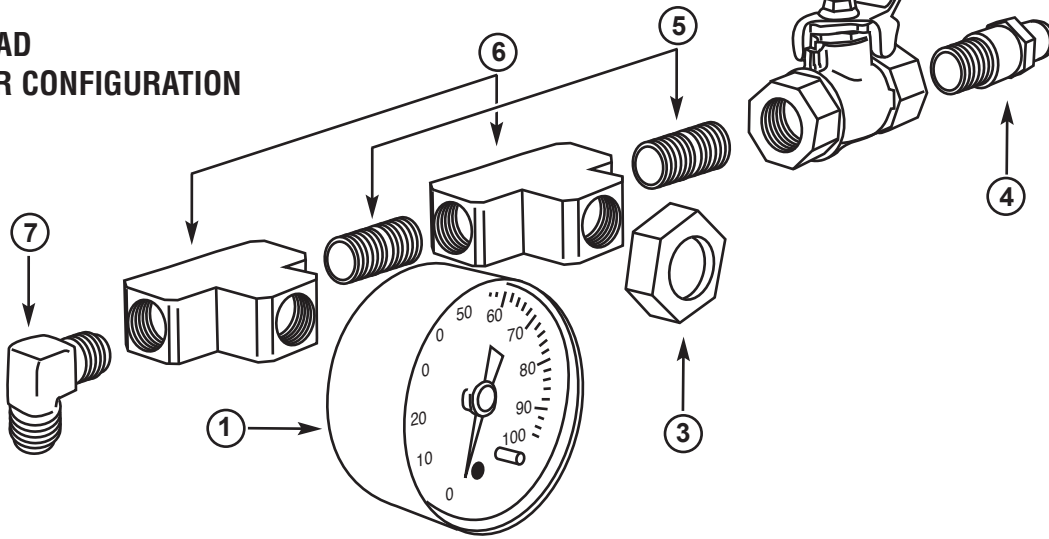


KEY	PART NO.	DESCRIPTION	UNIT
1	DSV-115	115V PURGE SOLENOID VALVE	1
2	DSV-230	230V PURGE SOLENOID VALVE	1
3	AS-500	1/2 FILTER ASSY	1
4	RDC-100	REPLACEMENT DESSICANT TANK	1
5	MV-250	METERING VALVE	1
6	SN-250-CL	STAINLESS STEEL NIPPLE 1/4	3
7	FE-4-6	FLAIR FITTING 1/4 X 3/8	1
8	BV-250	BALL VALVE 1/4	1
9	BT-250	BRASS TEE 1/4	2
10	FPH-375	CLEAR PURGE HOSE	PER FOOT
11	MSD-100	MOLECULAR-SIEVE 1 LB	2LBS
12	MSD-200	ACTIVATED ALUMINA 1 LB	2LBS
13	CV-250D	1/4 CHECK VALVE	1

## DUAL COMPRESSOR CONFIGURATION



## TRIPLE & QUAD COMPRESSOR CONFIGURATION

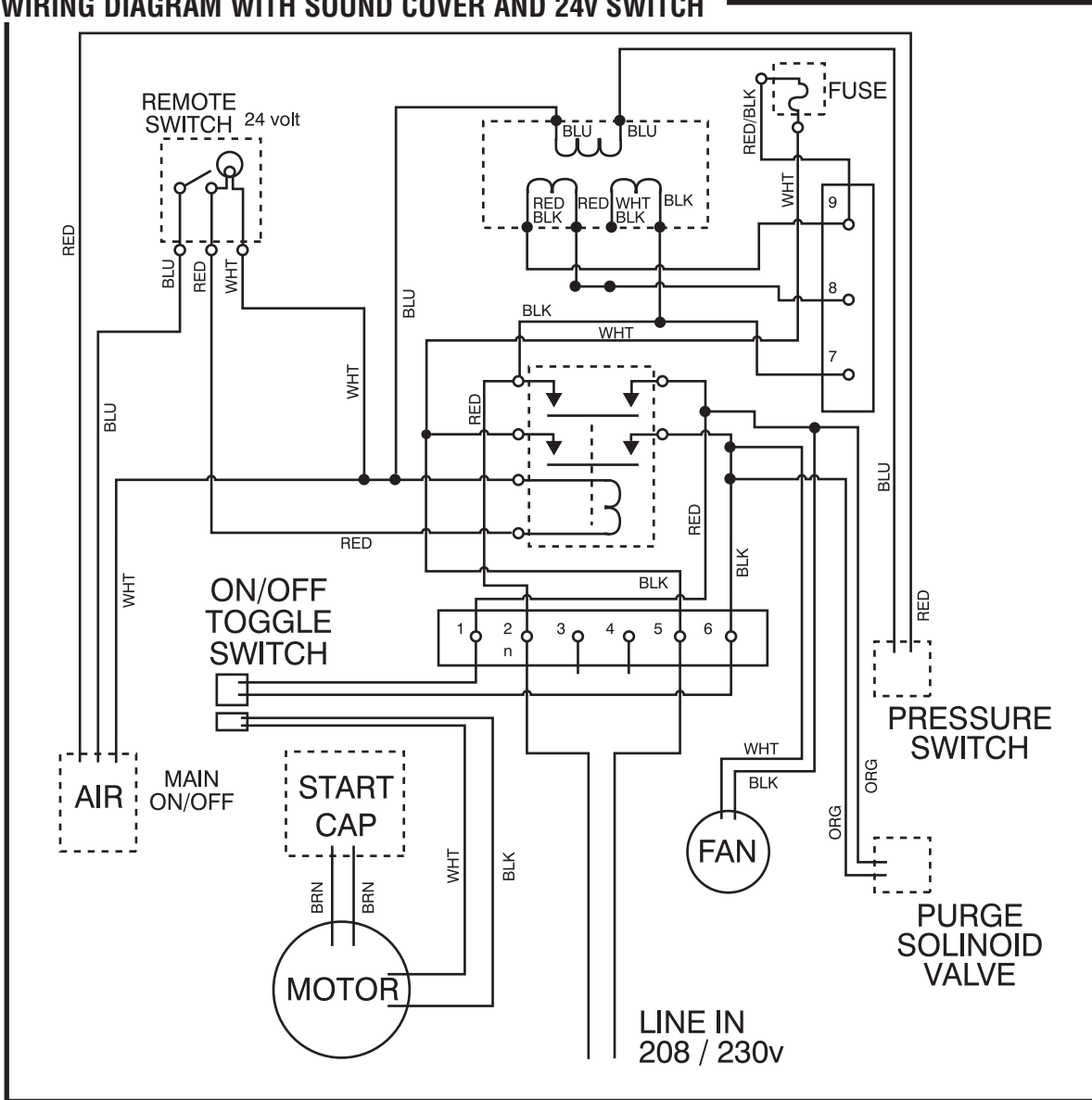


## ROCKY GAUGE AND CUT-OFF ASSEMBLY

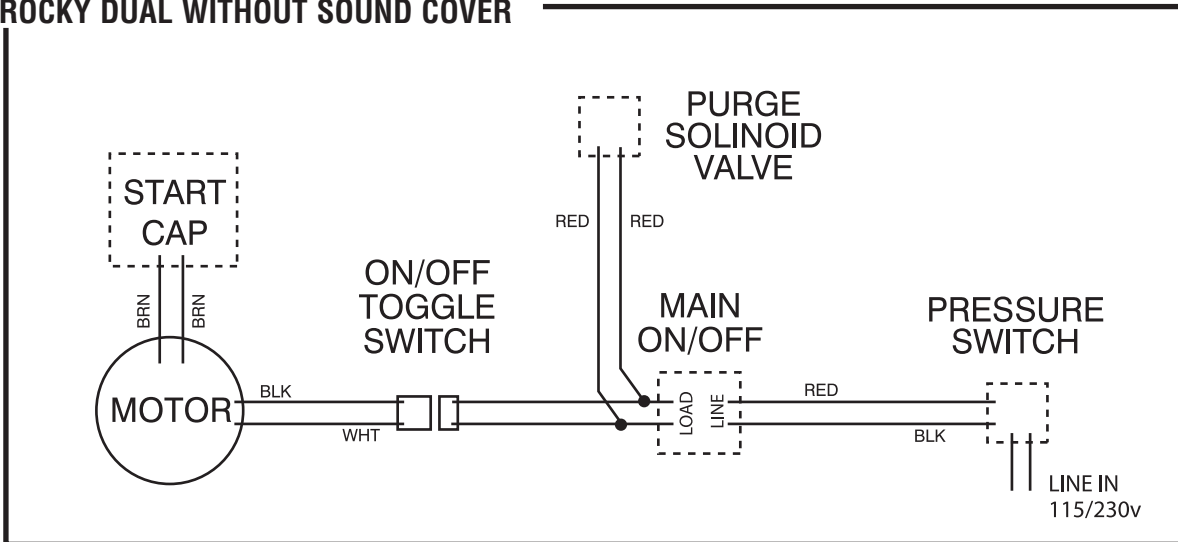
KEY	PART NO.	DESCRIPTION	UNIT
1	CPG-250	COMPRESSOR GAUGE	1
2	BV-250	1/4" BALL VALVE	1
3	MI-100	MOISTURE INDICATOR	1
4	FA-4-4	1/4" FLARE HOSE FITTING	1
5	BN-250-CL	1/4" BRASS CLOSE NIPPLE	1
6	BT-250	1/4" BRASS TEE	1
7	BSE-250	1/4" BRASS ELBOW	1
8	BPC-4	1/4" BRASS CROSS	1

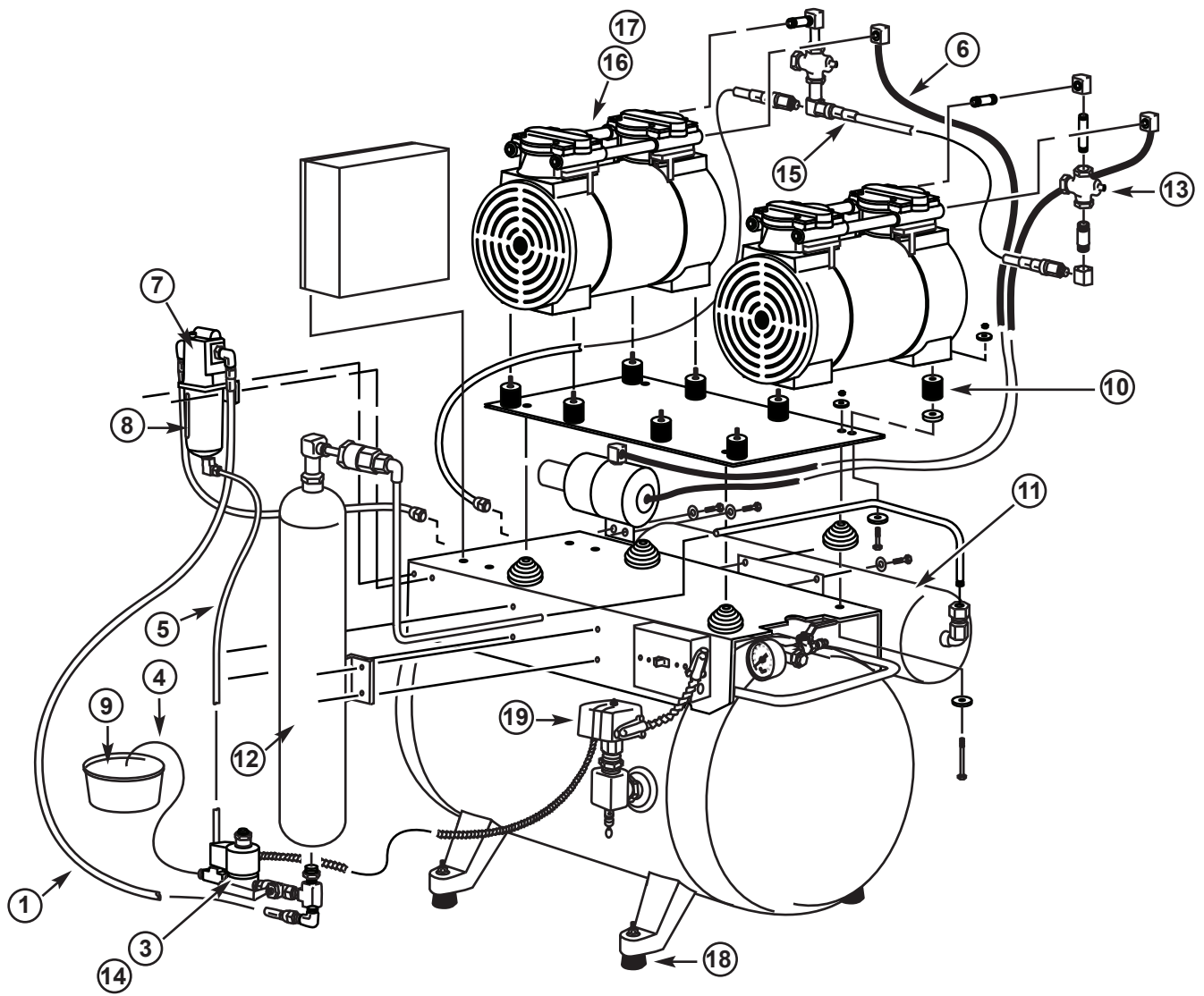
# ROCKY WIRING DIAGRAMS

## WIRING DIAGRAM WITH SOUND COVER AND 24v SWITCH



## ROCKY DUAL WITHOUT SOUND COVER

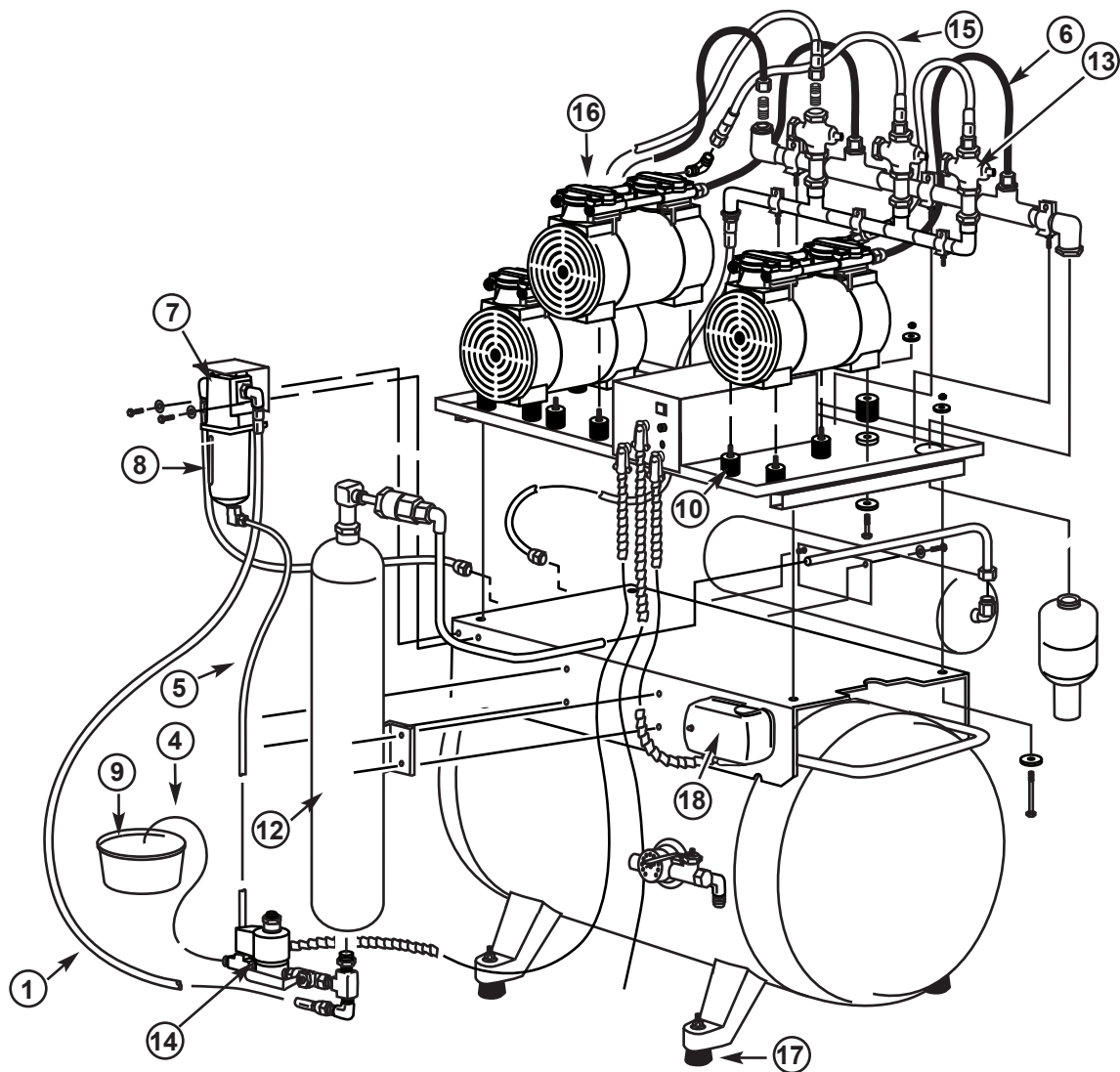




## DUAL ULTRA CLEAN ROCKY COMPRESSOR

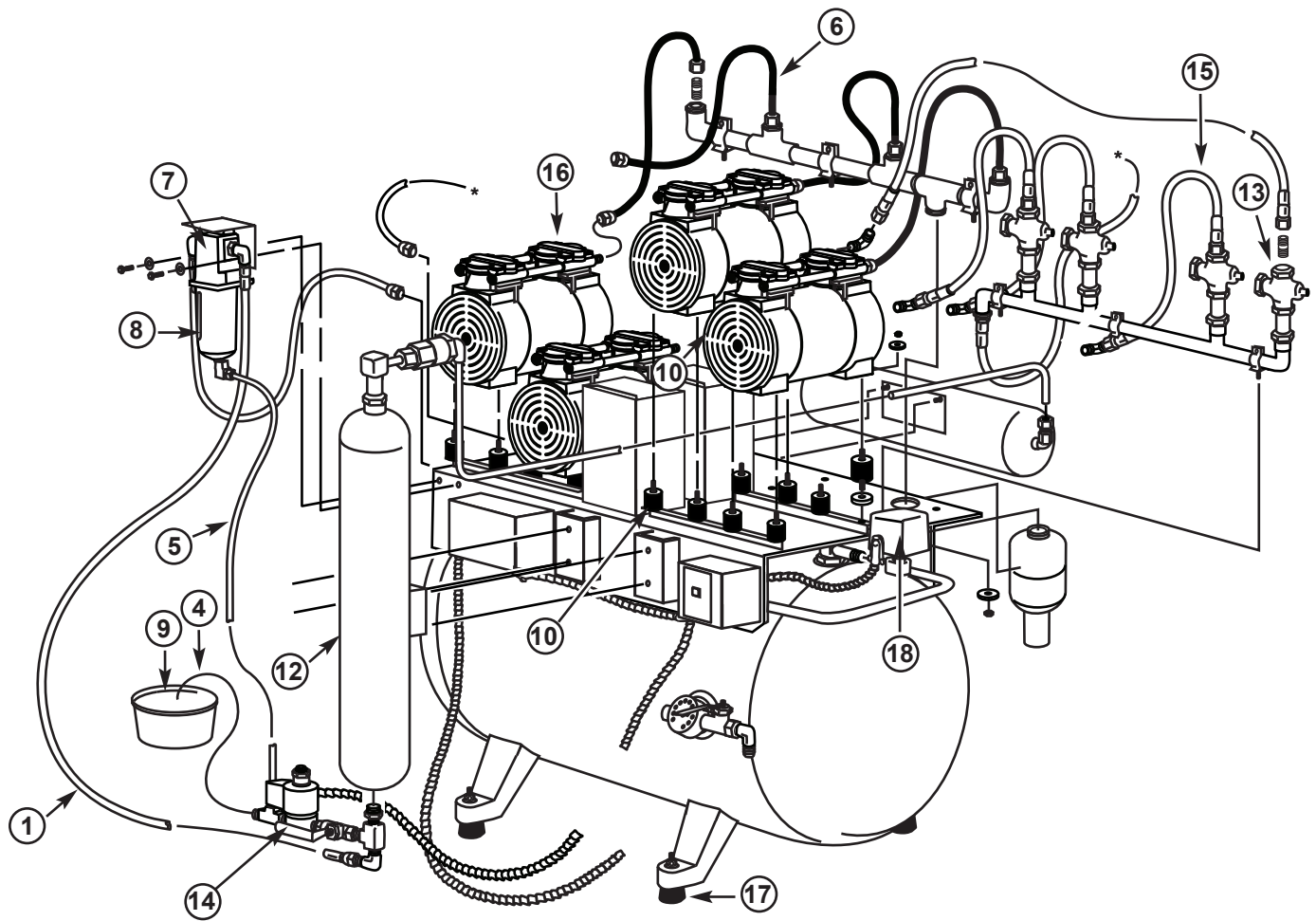
KEY	PART NO.	DESCRIPTION	UNIT
1	SBHA-21-375	STEEL BRAID HOSE ASSEMBLY	1
3	DSV-115	PURGE VALVE SOLENOID VALVE 115v	1
4	FPH-375	PURGE FLEX HOSE CLEAR	PER FT
5	ZZACS61	1/4 HOSE ASSEMBLY	PER FT
6	PFT-500	POLY FLO TUBE 1/2	PER FT
7	CFAO-375	COALESCING FILTER 3/8	1
8	CFO-375	COALESCING FILTER ELEMENT ONLY	1
9	DPB-100	DRYER PURGE BUCKET	1
10	RIC-GAST	RUBBER MOUNTING FEET	8
11	CPT-100	COMPRESSOR PURGE TANK	1
12	RDC-100	REPLACEMENT DESICCANT CARTRIDGE	1
13	CV-250D	3/8 CHECK VALVE	2
14	DSV-230	PURGE VALVE SOLENOID VALVE 230V	1
15	SBHA-18-375	STEEL BRAID HOSE ASSEMBLY	2
16	GOM-075R-115	OILLESS MOTOR 3/4 HP 115V	2
17	GOM-075R-230	OILLESS MOTOR 3/4 HP 230V	2
18	RFV-100	RUBBER MOUNTING FEET	4
19	PSC-3	PRESSURE SWITCH	1





## TRIPLE ULTRA CLEAN ROCKY COMPRESSOR

KEY	PART NO.	DESCRIPTION	UNIT
1	SBHA-21-375	STEEL BRAID HOSE ASSEMBLY	1
4	FPH-375	PURGE FLEX HOSE CLEAR	PER FT
5	ZZACS61	1/4 HOSE ASSEMBLY	PER FT
6	PFT-500	POLY FLO TUBE 1/2	PER FT
7	CFAO-375	COALESCING FILTER 3/8	1
8	CFEO-375	COALESCING FILTER ELEMENT ONLY	1
9	DPB-100	DRYER PURGE BUCKET	1
10	RIC-GAST	RUBBER MOUNTING FEET	12
11	CPT-100	COMPRESSOR PURGE TANK	1
12	RDC-100	REPLACEMENT DESICCANT CARTRIDGE	1
13	CV-375D-100	3/8 CHECK VALVE	3
14	DSV-230	PURGE VALVE SOLENOID VALVE 230V	1
15	SBHA-18-375	STEEL BRAID HOSE ASSEMBLY	2
16	GOM-075R-230	OILLESS MOTOR 3/4 HP 230V	3
17	RFV-100	RUBBER MOUNTING FEET	4
18	PSC-3	PRESSURE SWITCH	1

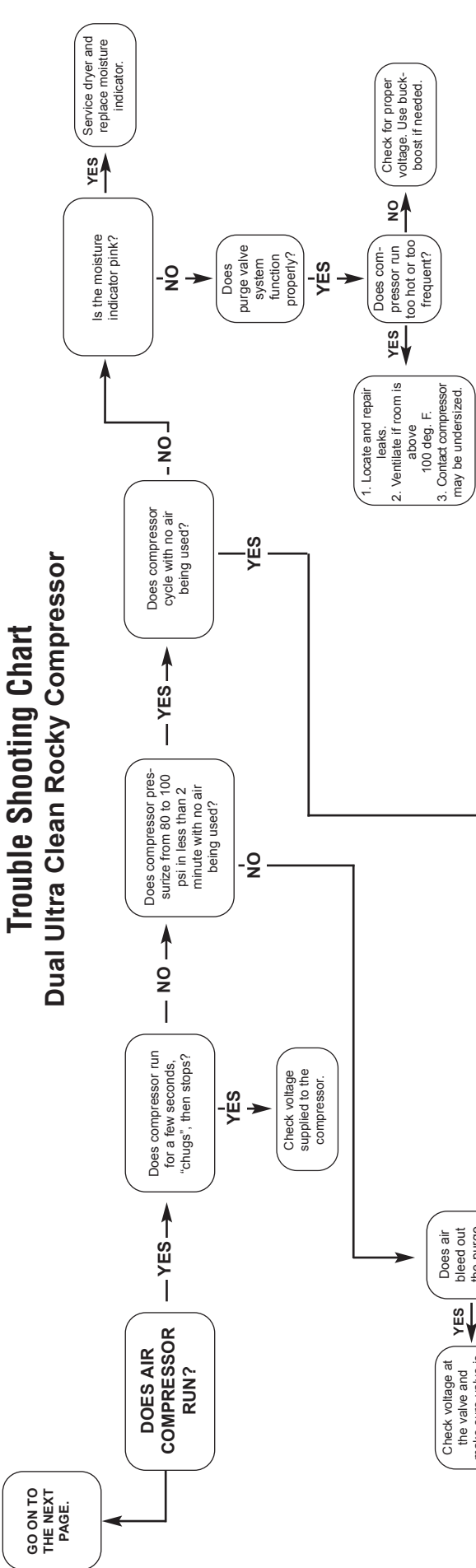


## QUAD ULTRA CLEAN ROCKY COMPRESSOR

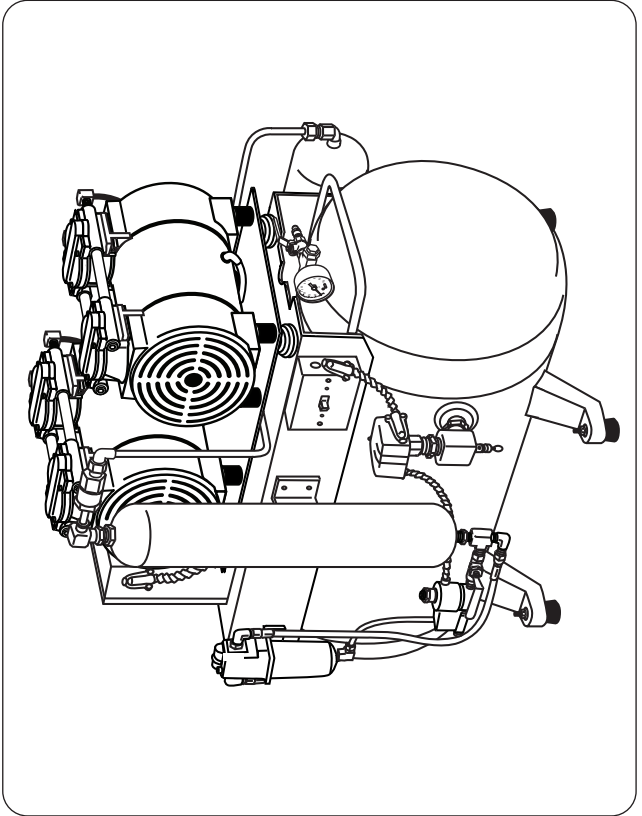
KEY	PART NO.	DESCRIPTION	UNIT
1	SBHA-21-375	STEEL BRAID HOSE ASSEMBLY	1
4	FPH-375	PURGE FLEX HOSE CLEAR	PER FT
5	ZZACS61	1/4 HOSE ASSEMBLY	PER FT
6	PFT-500	POLY FLO TUBE 1/2	PER FT
7	CFAO-375	COALESCING FILTER 3/8	1
8	CFEO-375	COALESCING FILTER ELEMENT ONLY	1
9	DPB-100	DRYER PURGE BUCKET	1
10	RIC-GAST	RUBBER MOUNTING FEET	16
11	CPT-100	COMPRESSOR PURGE TANK	1
12	RDC-100	REPLACEMENT DESICCANT CARTRIDGE	1
13	CV-375D-100	3/8 CHECK VALVE	4
14	DSV-230	PURGE VALVE SOLENOID VALVE 230V	1
15	SBHA-18-375	STEEL BRAID HOSE ASSEMBLY	2
16	GOM-075R-230	OILLESS MOTOR 3/4 HP 230V	4
17	RFV-100	RUBBER MOUNTING FEET	4
18	PSC-3	PRESSURE SWITCH	1



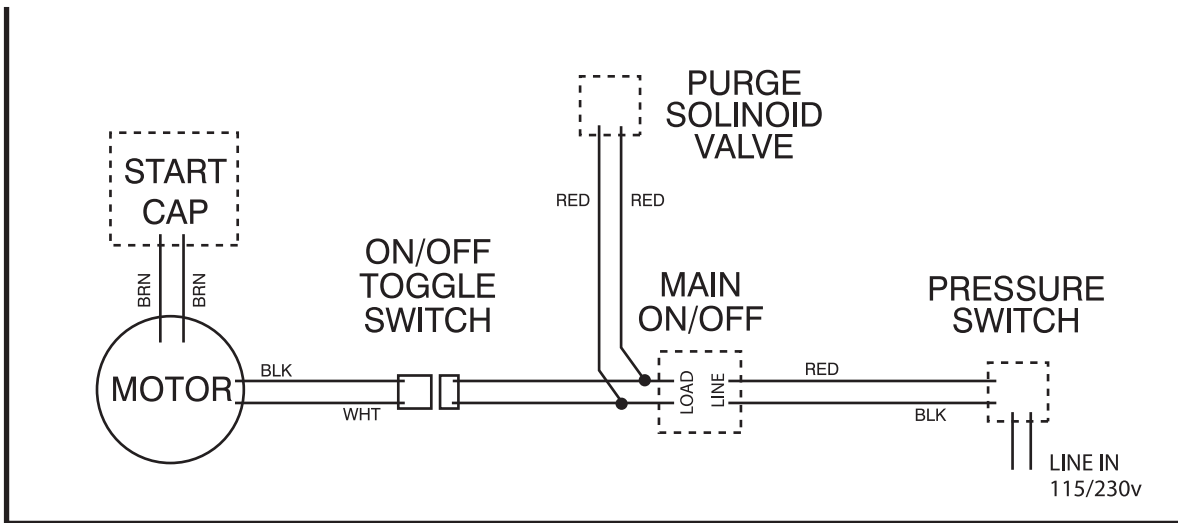
# Trouble Shooting Chart Dual Ultra Clean Rocky Compressor



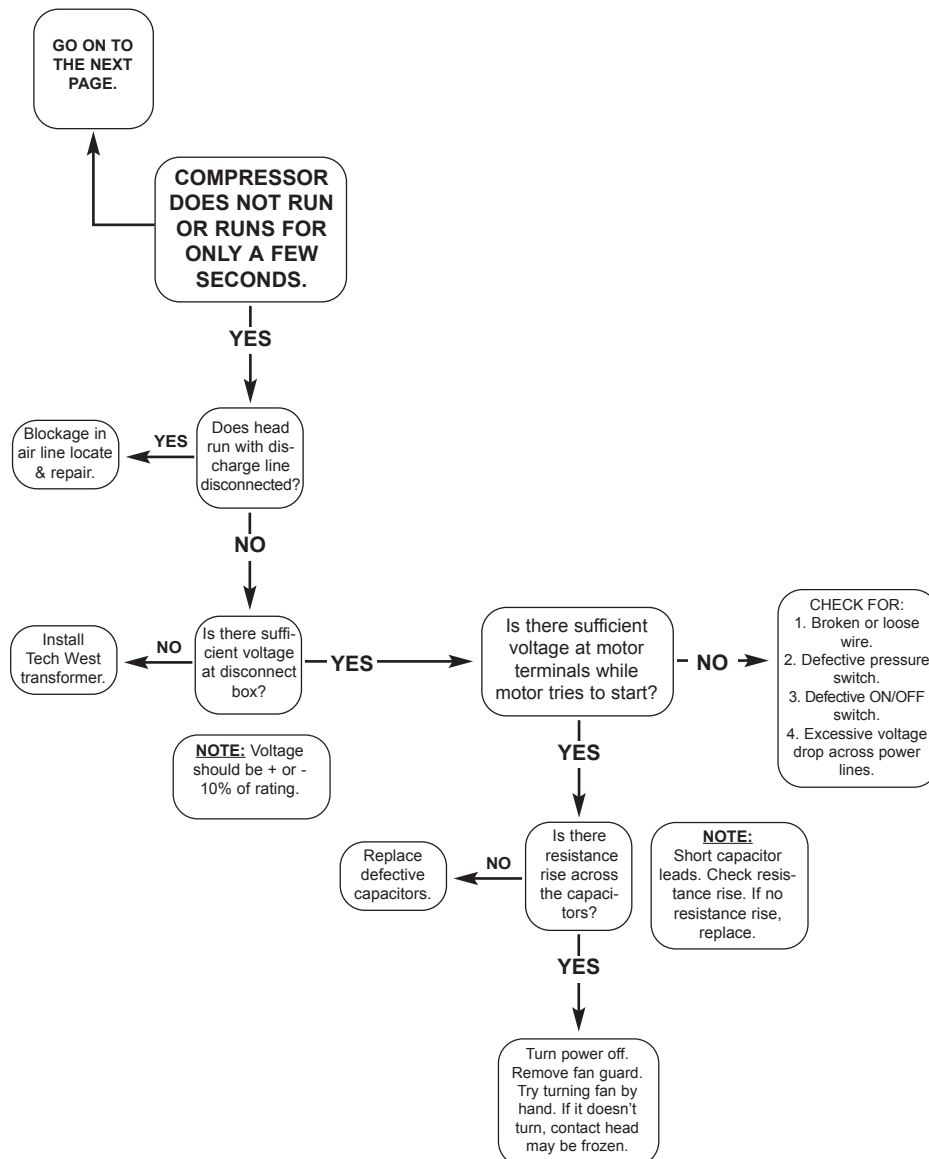
## Dual Ultra Clean Rocky Compressor



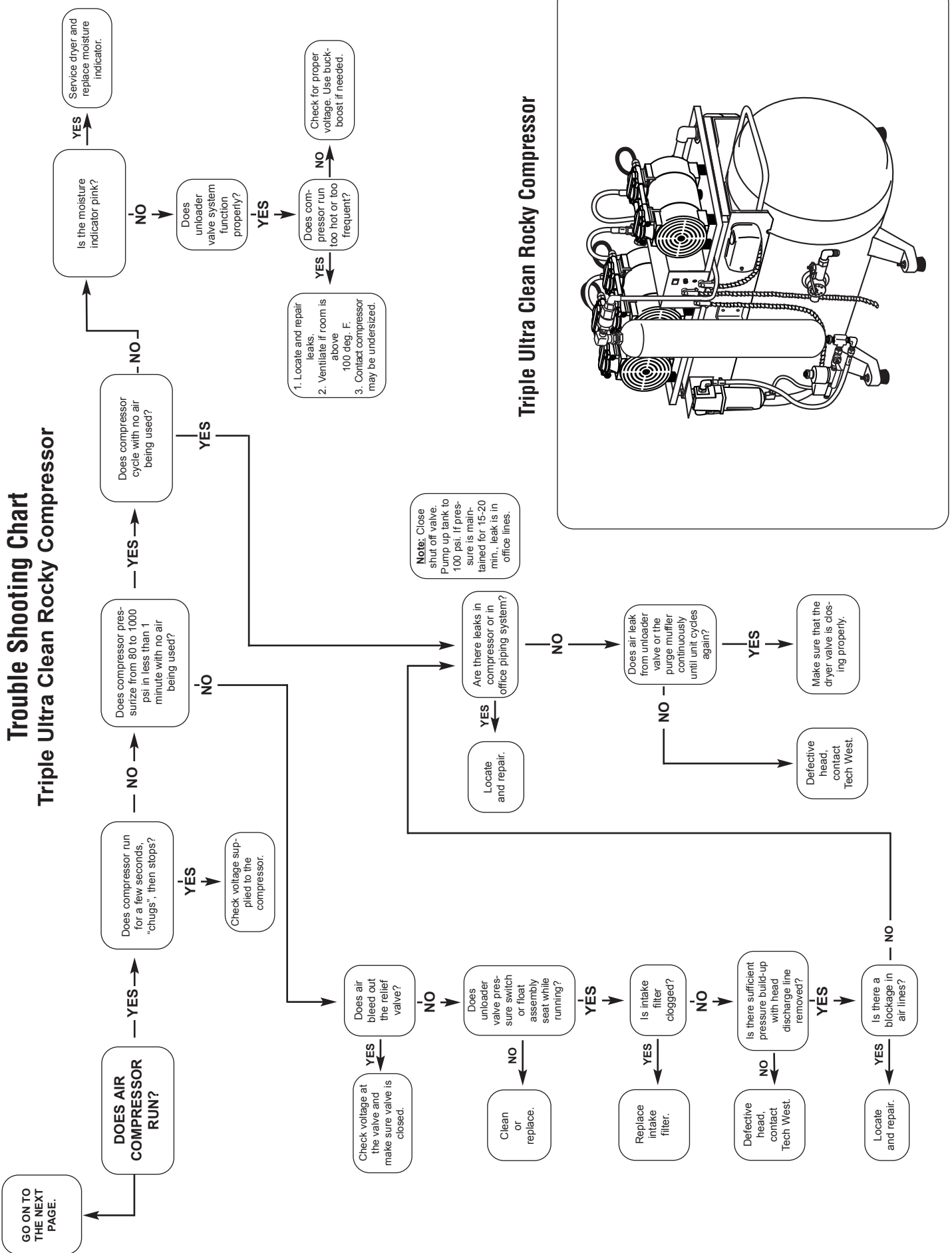
# ROCKY DUAL WITHOUT SOUND COVER



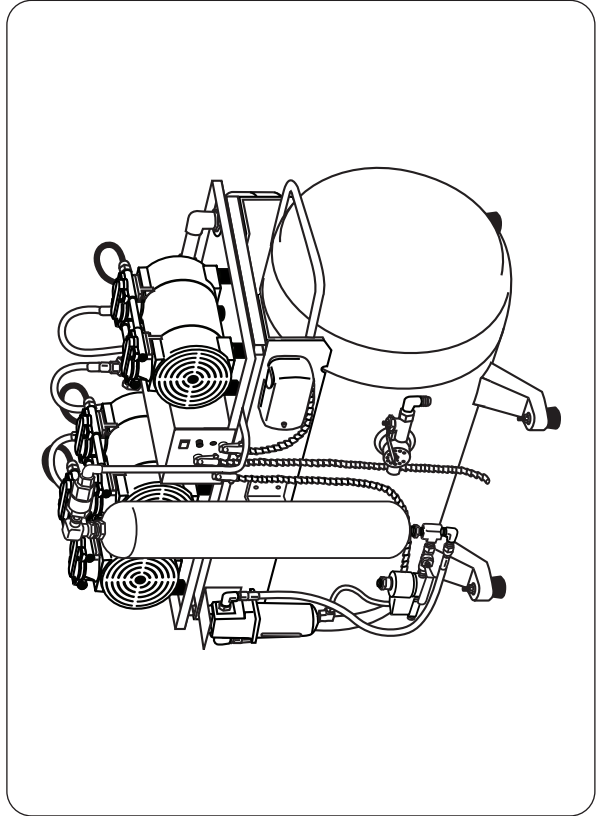
## Dual Ultra Clean Rocky Compressor



# Trouble Shooting Chart Triple Ultra Clean Rocky Compressor

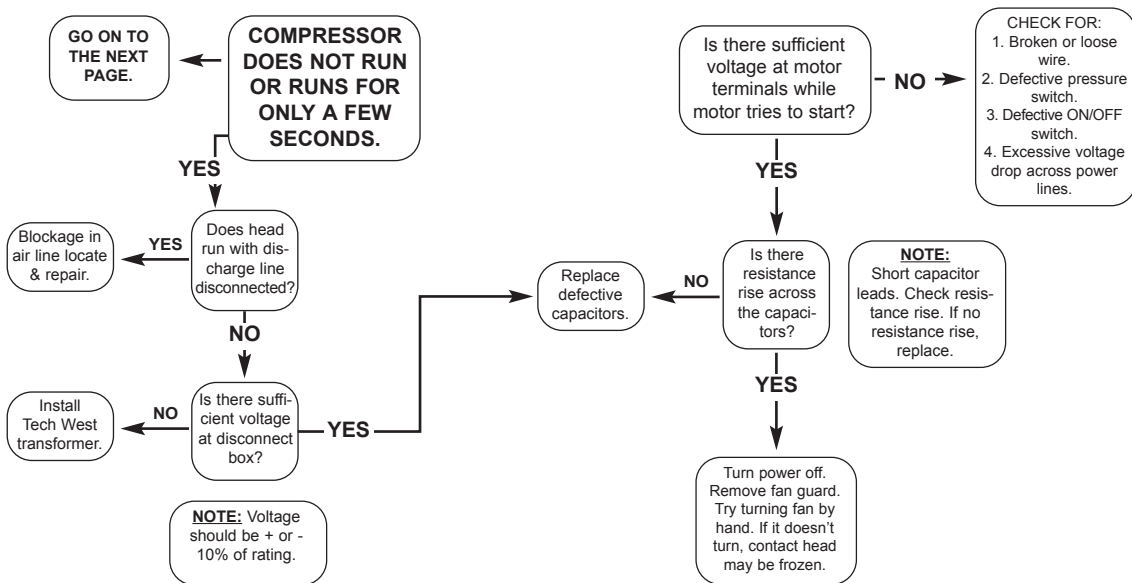
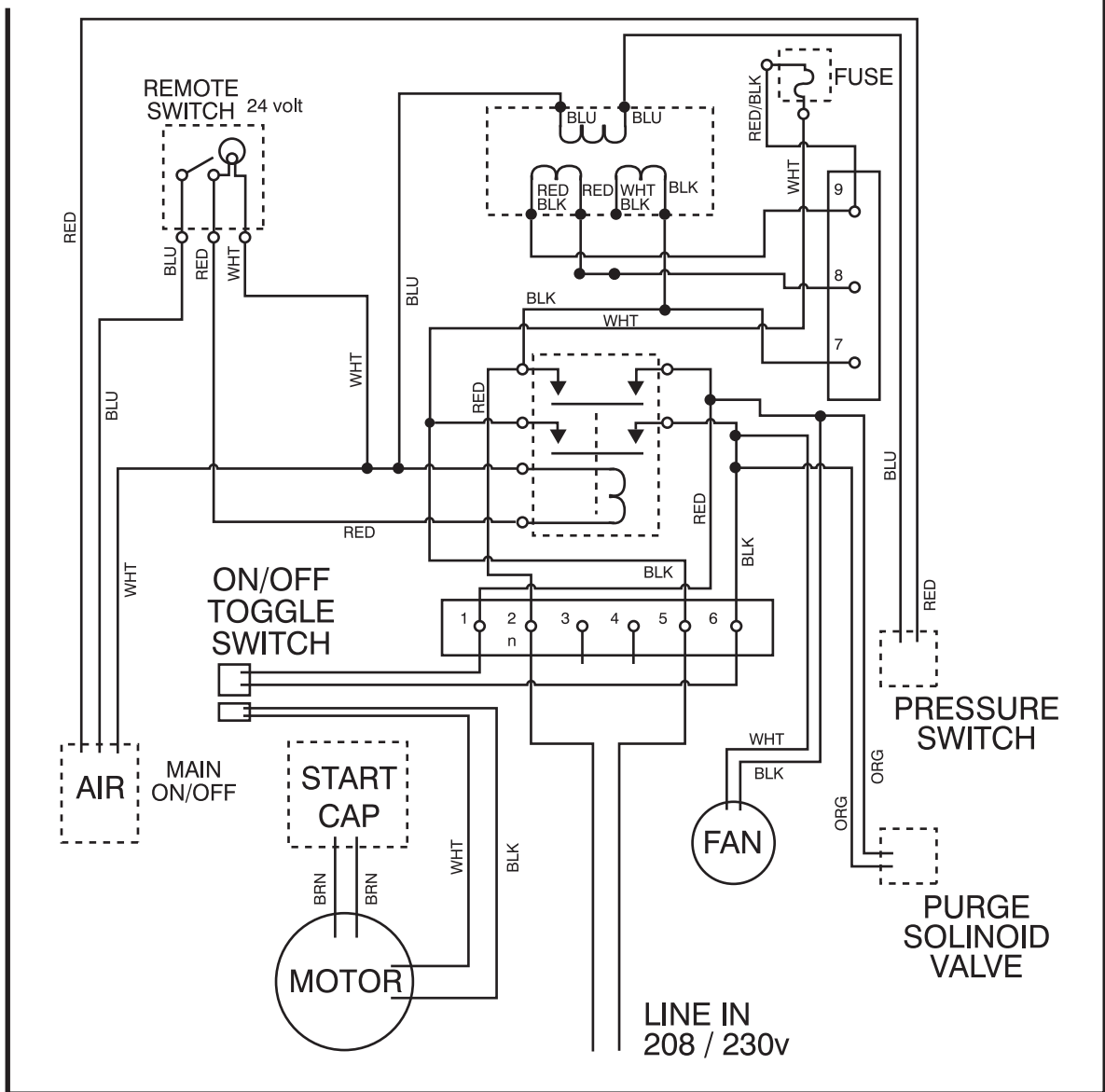


Triple Ultra Clean Rocky Compressor



# WIRING DIAGRAM WITH SOUND COVER AND 24v SWITCH

Triple Ultra Clean Rocky Compressor





# AIR LINE SIZING CHART

NUMBER OF OPERATORIES SEE NOTE	AIR LINE PIPE DIAMETER
	COPPER TYPE "M"
1	1/2"
2	1/2"
3	1/2"
4	1/2"
5	1/2"
6	3/4"
7	3/4"
8	3/4"
9	3/4"
10	1"
11	1"
12	1"









***TW*** **TECH WEST INC.**

Manufacturers of Dental Vacuum  
and Air Systems

2625 N. Argyle Ave. • Fresno, CA 93727  
(559) 291-1650 • (800) 428-7139 • FAX (559) 348-9677