

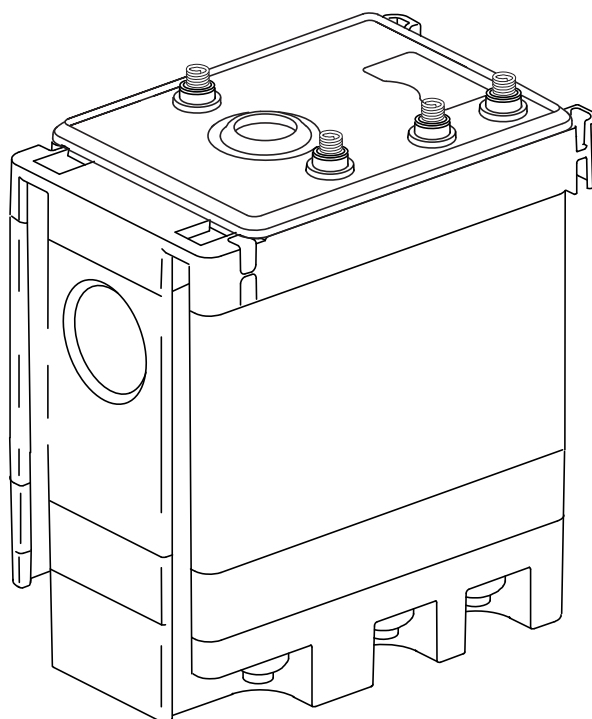
600 Series

Service Unit Replacement

Models: EDD 601-04, EDD 602-04, EDD 603-04, EDD 604-04

FORM NO.: 7428311 REVISION: 04/2016

READ AND UNDERSTAND THIS MANUAL PRIOR TO OPERATING OR SERVICING THIS PRODUCT.



CONTENTS

GENERAL INFORMATION.....	1
1.0 ENGINEERING DATA	1
2.0 MAINTENANCE	2
3.0 TROUBLESHOOTING GUIDE.....	3
4.0 COMPONENTS	4
5.0 RECOMMENDED SPARE PARTS.....	4
WARRANTY	

GENERAL INFORMATION

1. Do not exceed maximum operating pressure (see type plate).
NOTE: Maintenance work must only be carried out when the device is not under pressure.
2. Only use pressure-proof installation material.
The feed line (1/2") must be firmly fixed. Discharge line: short pressure hose to pressure-proof pipe. Please ensure that condensate cannot squirt onto persons or objects.
3. In case conical connectors are used on the inlet side, avoid excessive tightening of the connectors.
4. For locking or holding in position during installation, use spanner area at inflow point.
5. The electrical installation must be carried out in compliance with the valid regulations.

NOTE: Maintenance work is only allowed when the device is in a de-energized condition. Electrical work must always be performed by a qualified electrician.

6. Do not operate the device when there is a danger of frost.
7. The Series 600 condensate drain will only function when voltage is being applied to the device.
8. Do not use the test button for continuous draining.
9. Do not use the Series 600 condensate drain in hazardous areas (with potentially explosive atmospheres).
10. Only employ original spare parts, otherwise the guarantee will no longer be valid.

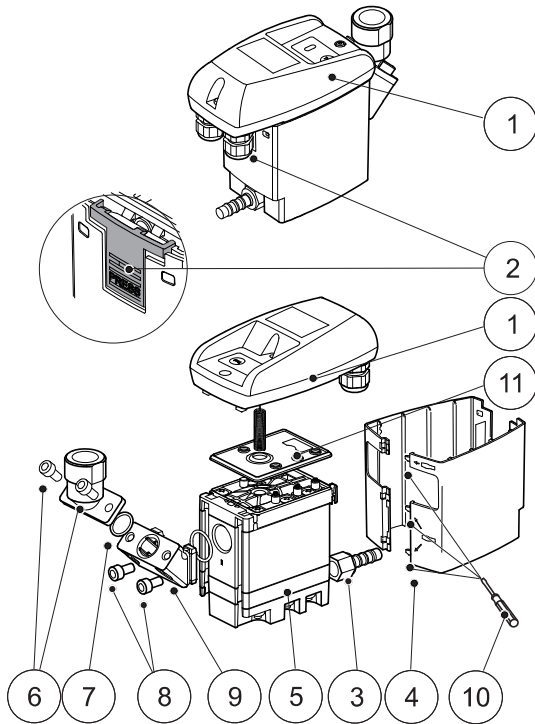
1.0 ENGINEERING DATA

	EDDSU 1 (Models 601 & 603)	EDDSU 2 (Models 602 & 604)
Min. / Max. Operating Pressure (see type plate)	18 PSI / 230 psi	12 PSI / 230 psi
Min. / Max. Air Temperature (see type plate)	+34°F / +158°F	+34°F / +140°F
Condensate Inflow	1/2" NPT	1/2" BSP
Condensate Outflow	1/4" BSP with 8-10mm Barbed Hose Connector	
Weight (empty)	1.1 lbs.	

2.0 MAINTENANCE

Before maintenance work always ensure that the device is:

- depressurized and
- de-energized

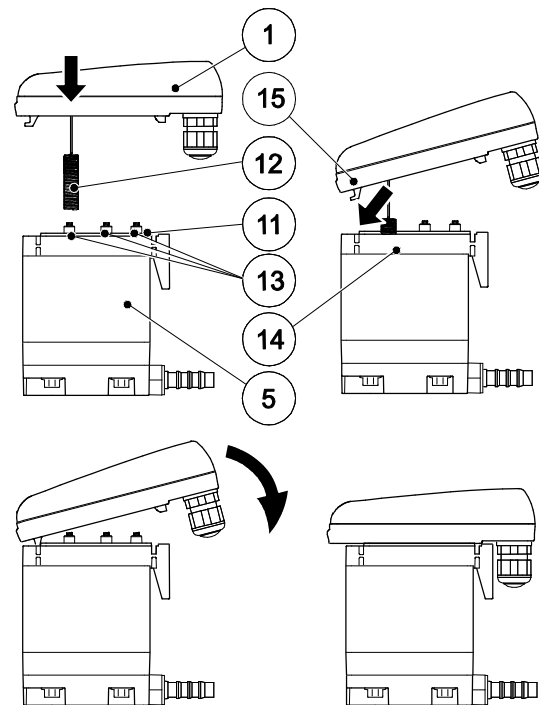


Maintenance recommendation:

1. Remove the control unit (1) by pressing the arresting hook (2).
2. Unfasten from the outlet (3).
3. Detach the service unit (5) from the tubing at the inlet.

NOTE: Missing numbers are constituents of the electric demand drain stand alone unit

Installation of the control unit on the service unit:



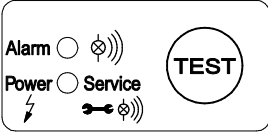
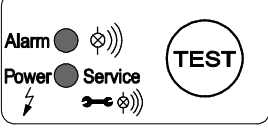
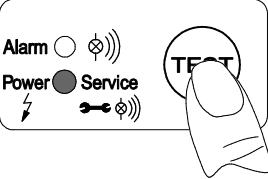
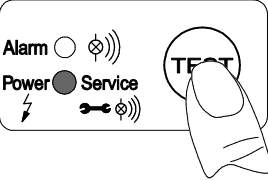
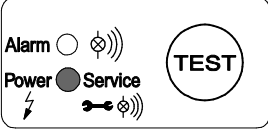
1. Check whether or not the service unit (5) goes with the control unit (1).
2. Check whether or not the sealing mat (11) and the contact springs (13) are clean, dry, and free from impurities.
3. Introduce the sensor (12) into the sensor tube plate (14).
4. Hang the hook (15) of the control unit (1) in the sensor tube plate (14).
5. Press the control unit (1) against the service unit (5) and snap into place.

Start-up subsequent to maintenance measures:

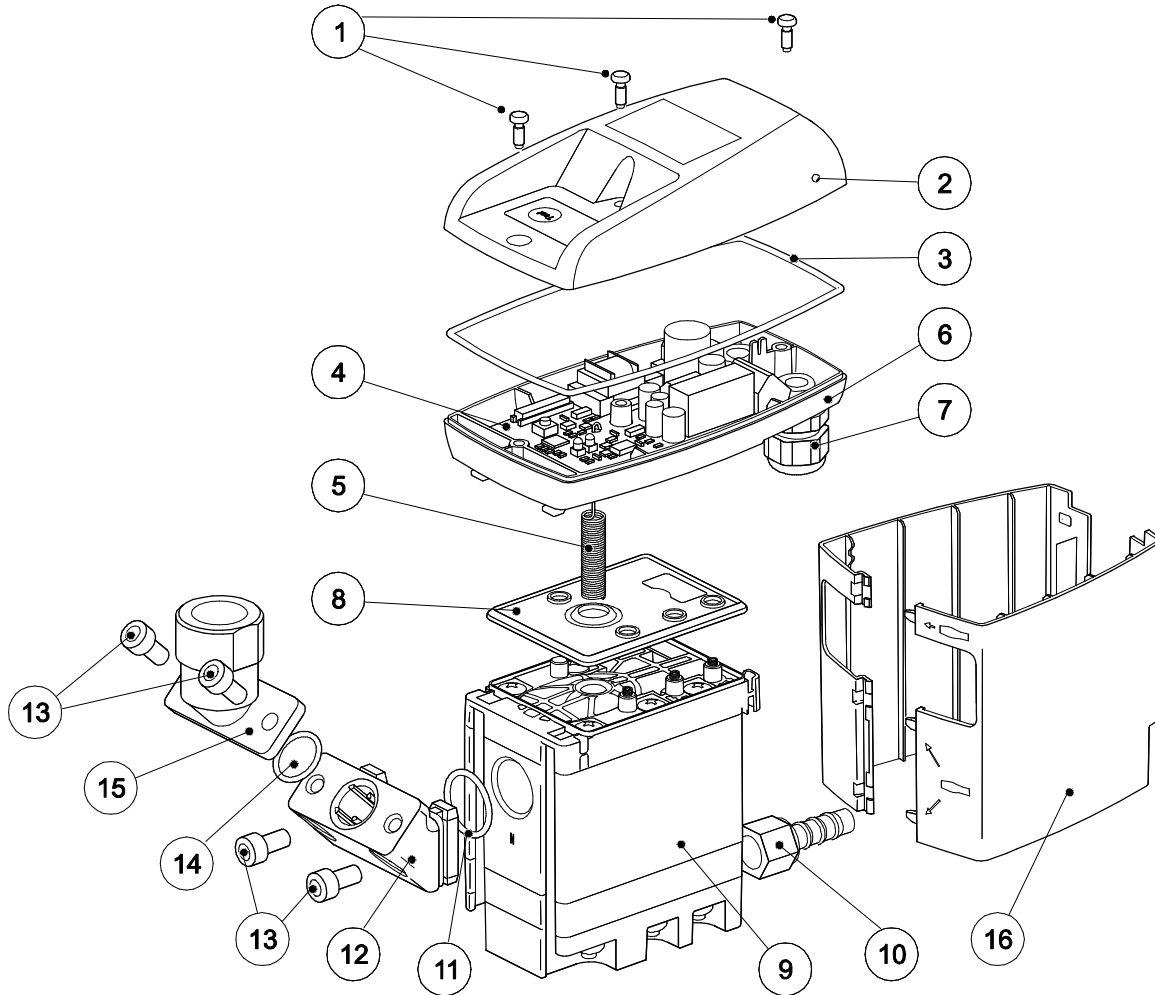
Always perform prior to the start-up:

1. Leak test of the screwed connector.
2. Check of the electrical connections.
3. Check of the correct engagement of the control unit.

3.0 TROUBLESHOOTING GUIDE

Symptom	Possible Causes	Corrective Action
<p>No LED lights up</p> 	<p>Power supply faulty Power supply board defective</p>	<p>Check voltage on the ID plate Check wiring (external and internal) Check plug connections Check the circuit boards for possible damage</p>
<p>All LEDs are continuously on</p> 	<p>Failure during the start of the programming Circuit board defective</p>	<p>Separate the device from the supply voltage. Restart after 5 seconds. Check the circuit boards for possible damage</p>
<p>Test button pressed, but no condensate discharge</p> 	<p>Feed and/or outlet line shut off or blocked Wear and tear Control printed circuit board defective Service unit defective Minimum pressure not reached Maximum pressure exceeded</p>	<p>Check feed line and outlet line Replace worn parts Check if valve opens audibly (press test button several times) Check printed circuit boards for possible damage Check operating pressure</p>
<p>Condensate discharge only when the test button is pressed</p> 	<p>Feed line with insufficient slope; cross-section too small Excessive condensate quantities Service unit extremely dirty</p>	<p>Lay feed line with adequate slope Replace the service unit</p>
<p>Device keeps blowing off air</p> 	<p>Service unit defective or dirty</p>	<p>Replace the service unit</p>

4.0 COMPONENTS



- | | |
|--|---|
| <ul style="list-style-type: none"> 1. Screw 3.5 x 10 2. Upper part of cover 3. Cord packing 2 x 352 4. Circuit board 5. Sensor 6. Lower part of the cover 7. Cable bushing 8. Sealing mat 9. Service unit | <ul style="list-style-type: none"> 10. Hose connector G 1/4" 11. O-ring 20 x 2 12. Intermediate adapter 13. Screw M6 x 12 14. O-ring 14 x 1.78 15. Angle adaptor (G 1/2 = Model 602)
(NPT 1/2 = Models 601 & 603) 16. Design shell (N/A: Models 603 & 604) |
|--|---|

5.0 RECOMMENDED SPARE PARTS

Available sets of spare parts	Order Number	Contents
Service unit with 1/2" BSP connection	7428277	8, 9, 11
Service unit with 1/2" NPT connection	7428278	

WARRANTY

The manufacturer warrants the product manufactured by it, when properly installed, operated, applied, and maintained in accordance with procedures and recommendations outlined in manufacturer's instruction manuals, to be free from defects in material or workmanship for a period of one (1) year from the date of shipment to the buyer by the manufacturer or manufacturer's authorized distributor, or eighteen months from the date of shipment from the factory, whichever occurs first, provided such defect is discovered and brought to the manufacturer's attention within the aforesaid warranty period. The manufacturer will repair or replace any product or part determined to be defective by the manufacturer within the warranty period, provided such defect occurred in normal service and not as a result of misuse, abuse, neglect or accident.

The warranty covers parts and labor for the warranty period. Repair or replacement shall be made at the factory or the installation site, at the sole option of the manufacturer. Any service performed on the product by anyone other than the manufacturer must first be authorized by the manufacturer. Normal maintenance items requiring routine replacement are not warranted. Unauthorized service voids the warranty and any resulting charge or subsequent claim will not be paid. Products repaired or replaced under warranty shall be warranted for the unexpired portion of the warranty applying to the original product. The foregoing is the exclusive remedy of any buyer of the manufacturer's product. The maximum damages liability of the manufacturer is the original purchase price of the product or part.

THE FOREGOING WARRANTY IS EXCLUSIVE AND IN LIEU OF ALL OTHER WARRANTIES, WHETHER WRITTEN, ORAL, OR STATUTORY, **AND IS EXPRESSED IN LIEU OF THE IMPLIED WARRANTY OF MERCHANTABILITY AND THE IMPLIED WARRANTY OF FITNESS FOR A PARTICULAR PURPOSE.** THE MANUFACTURER SHALL NOT BE LIABLE FOR LOSS OR DAMAGE BY REASON OF STRICT LIABILITY IN TORT OR ITS NEGLIGENCE IN WHATEVER MANNER INCLUDING DESIGN, MANUFACTURE OR INSPECTION OF THE EQUIPMENT OR ITS FAILURE TO DISCOVER, REPORT, REPAIR, OR MODIFY LATENT DEFECTS INHERENT THEREIN. THE MANUFACTURER, HIS REPRESENTATIVE OR DISTRIBUTOR SHALL NOT BE LIABLE FOR LOSS OF USE OF THE PRODUCT OR OTHER INCIDENTAL OR CONSEQUENTIAL COSTS, EXPENSES, OR DAMAGES INCURRED BY THE BUYER, WHETHER ARISING FROM BREACH OF WARRANTY, NEGLIGENCE OR STRICT LIABILITY IN TORT.

The manufacturer does not warrant any product, part, material, component, or accessory manufactured by others and sold or supplied in connection with the sale of manufacturer's products.

AUTHORIZATION FROM THE SERVICE DEPARTMENT IS NECESSARY BEFORE MATERIAL IS RETURNED TO THE FACTORY OR IN-WARRANTY REPAIRS ARE MADE.

SERVICE DEPARTMENT: (724) 746-1100

600 Series

Service Unit Replacement

Models: EDD 601-04, EDD 602-04,
EDD 603-04, EDD 604-04

SPXFLOW[®]

SPX FLOW, INC.

4647 S.W. 40th Avenue

Ocala, Florida 34474-5788 U.S.A.

P: (724) 745-1555

F: (724) 745-6040

E: hankison.americas@spxflow.com

www.spxflow.com/hankison

Improvements and research are continuous at SPX FLOW, Inc.

Specifications may change without notice.

ISSUED 04/2016 Form No.: 7428311 Revision: A

COPYRIGHT ©2016 SPX FLOW, Inc.