

4

3

2

1

DEHYDRATION MEMBRANE DATA

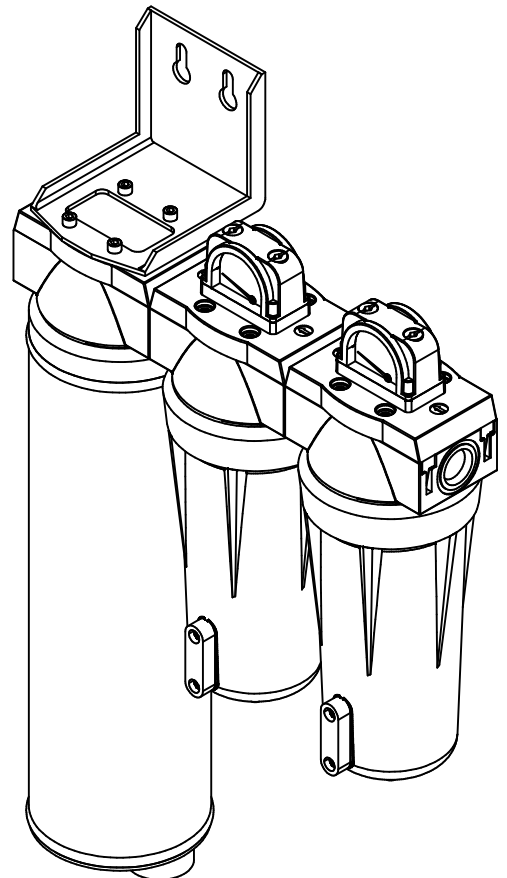
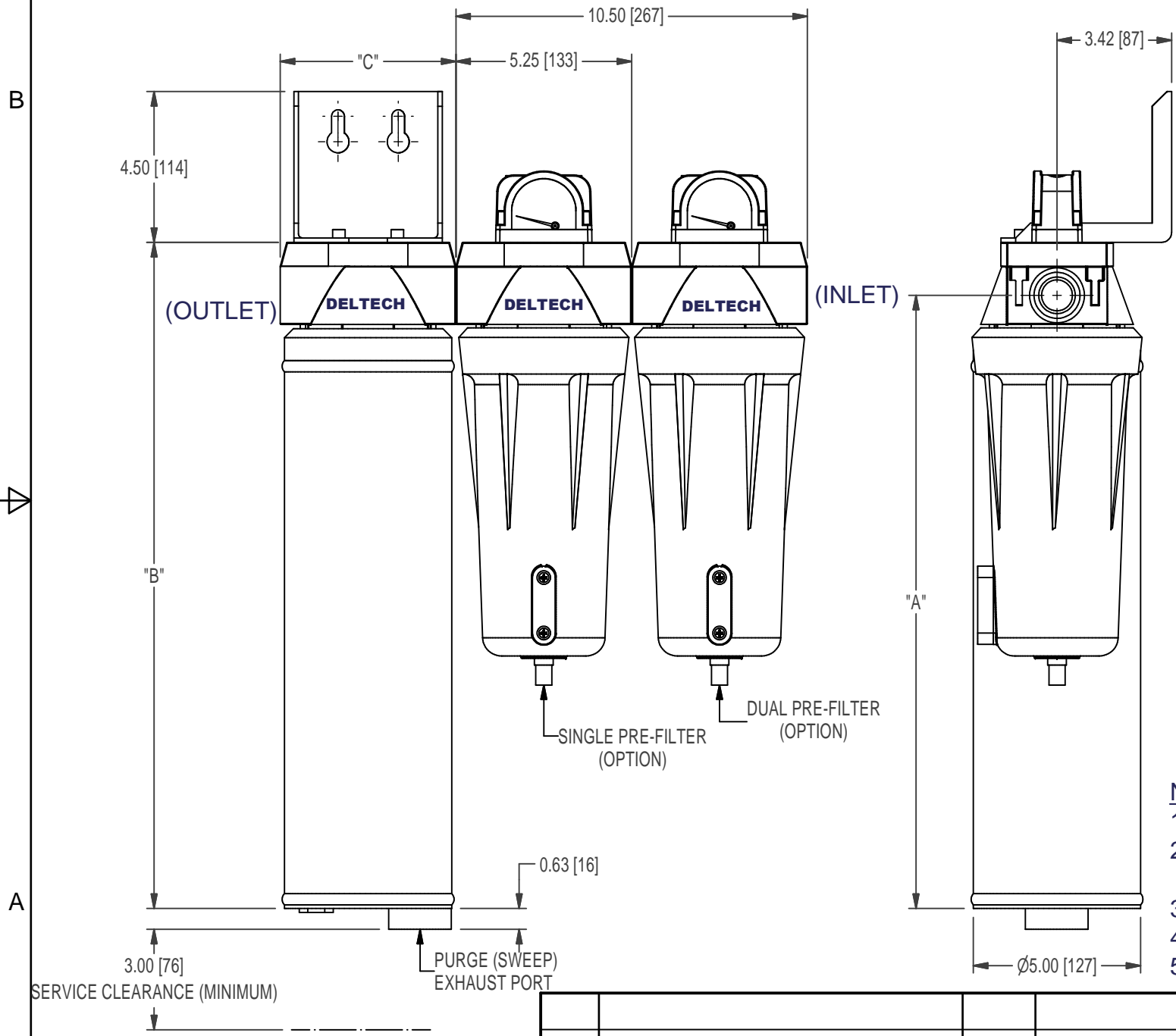
PERFORMANCE CHART (RATED CONDITIONS)

MODEL #	"A", IN (mm)	"B", IN (mm)	"C", IN (mm)	DRYER WEIGHT, LBS (kg)	DRYER REPLACEMENT CARTRIDGE
DMD5-6	18.32 (465)	19.90 (505)	5.25 (133)	11 (5.0)	DMB5-II
DMD6-6	26.14 (664)	27.72 (704)	5.25 (133)	14 (6.4)	DMB6-II
DMD7-8	26.59 (675)	28.83 (732)	6.44 (164)	17 (7.7)	DMB7-II

INLET FLOW RATE, PDP @ +40F	OUTLET FLOW RATE, PDP @ +40F
24.3 (0.69)	21.0 (0.59)
40.5 (1.15)	35.4 (1.00)
66.6 (1.89)	57.0 (1.61)

MODEL#	INLET FLOW RATE, PDP @ -40F	OUTLET FLOW RATE, PDP @ -40F
DMD5-6	7.9 (0.22)	4.6 (0.13)
DMD6-6	17.1 (0.48)	12.0 (0.34)
DMD7-8	18.5 (0.52)	8.9 (0.25)

*NOTE(S): FLOW RATE UNITS ARE AS FOLLOWS: SCFM (Nm3/min).
CONSULT FACTORY FOR PERFORMANCE UNDER NON-RATED CONDITIONS.



- NOTES & SPECIFICATIONS:**
- ALL MODELS TESTED TO CAGI ADF700 TEST STANDARDS.
 - RATED PERFORMANCE BASED ON THE FOLLOWING CAGI ACCEPTED CONDITIONS:
INLET TEMPERATURE (SATURATED): 100°F (38°C), INLET PRESSURE: 100-PSIG (6.9-BARG).
 - ADD AN F TO THE MODEL NUMBER TO DESIGNATE A SINGLE PRE-FILTER (e.g. DMD5-6F).
 - ADD AN F2 TO THE MODEL NUMBER TO DESIGNATE A DUAL PRE-FILTER PACKAGE (e.g. DMD5-6F2).
 - ADD AN ADDITIONAL 6.3-LBS (2.9-kg) FOR EACH ADDITIONAL PRE-FILTER.

REV.	DESCRIPTION	BY	DATE	APPROVED
REVISION HISTORY (△ INDICATES LATEST REVISION)				

UNLESS OTHERWISE SPECIFIED
DIMENSIONS ARE IN INCHES
TOL. ON FRACTIONS: ±
TOL. ON DECIMALS: ± .03 (2 PLACE)
TOL. ON DECIMALS: ± .015 (3 PLACE)
TOL. ON ANGLES: ± 1°

THIRD ANGLE PROJECTION

FILER NO:
DRAWN BY: DDB
DATE: 8/24/06
CHECKED BY: DDB
DATE: 8/24/06
APPROVED BY: DDB
DATE: 8/24/06

TITLE: MEMBRANE DRYER MODELS DMD5 THRU DMD7

SIZE: B	MATL:	DWG. NO.: GA21DEL-0002	REV.:
SCALE: NONE	EST. WT.:	SHEET 1 OF 1	

4

3

2

1