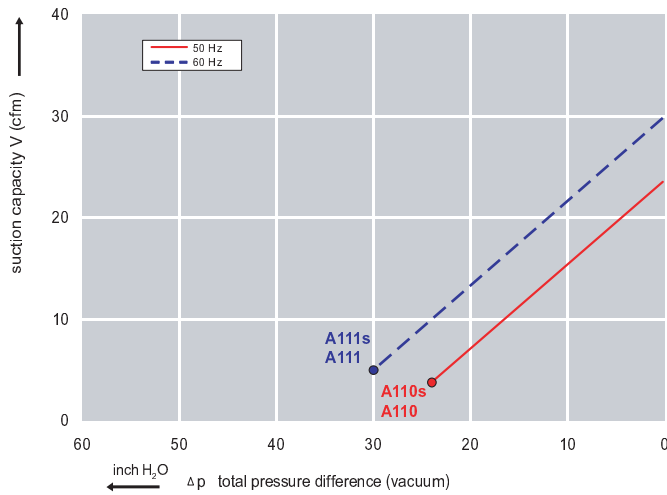




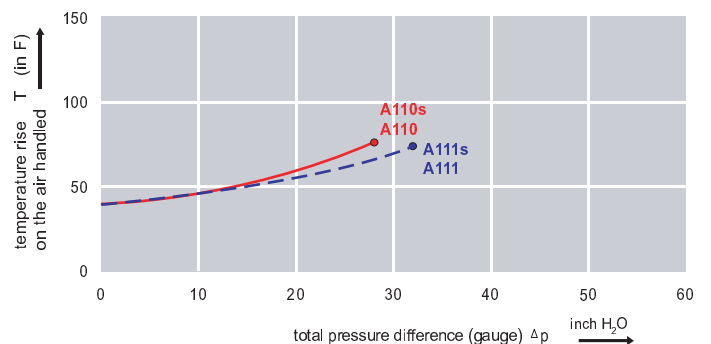
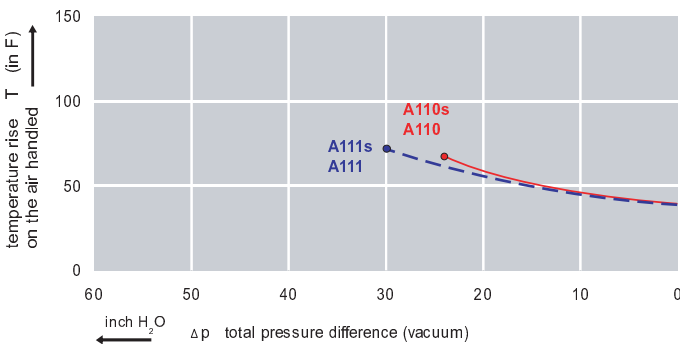
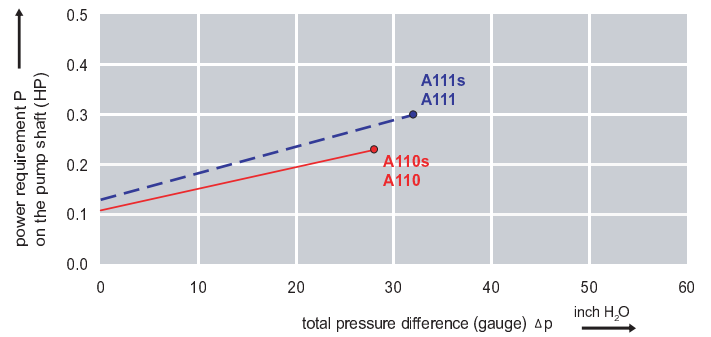
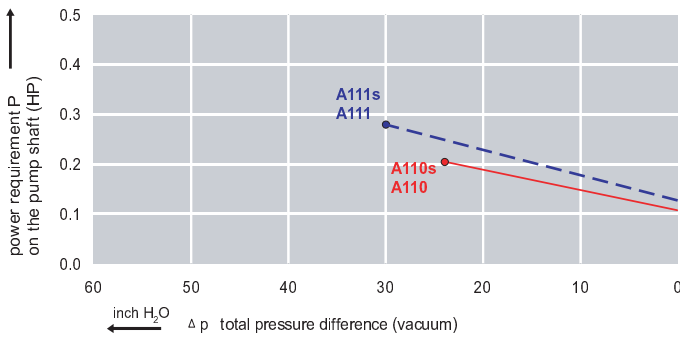
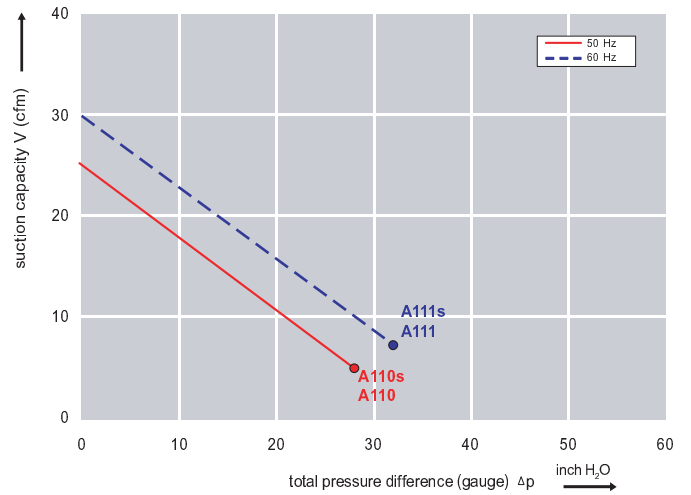
### Features:

- Cooler running, outboard bearing provides maintenance-free operation
- Environmentally friendly oil-free technology
- Extremely quiet operation
- All motors are standard TEFC with Class F insulation, UL recognized, CE Compliant  
*Explosion-Proof motors available*
- Custom construction blowers are available
- Rugged die cast aluminum construction

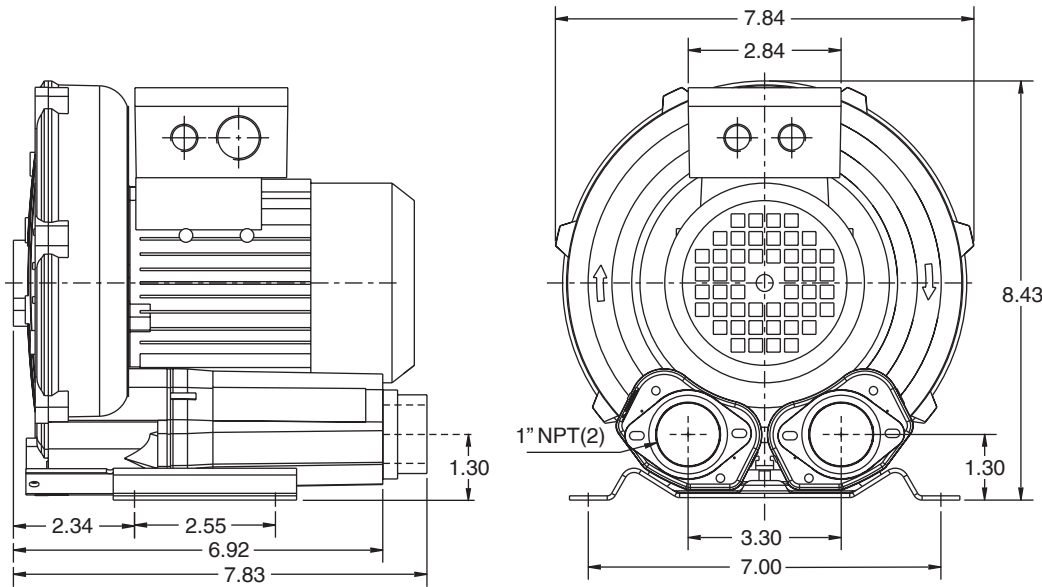
Performance curve for Vacuum pump



Performance curve for Compressor



### Dimensions: (inches)



### Relief valve:

VC51Z (Vacuum)  
PC51Z (Pressure)

### Filter:

ATF-125-1337  
(Vacuum)  
AFS-20-125-10  
(Pressure)

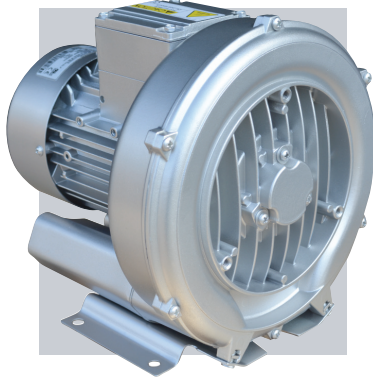
Specifications subject to change without notice. Please contact factory for specification updates.

### Selection & Ordering Data - Type 3BA1100

Curve No.	Order No.	Fre- quency Hz	Rated power HP	Input voltage		Input current		Permissible total differential pressure <sup>2)</sup>		Sound pressure level <sup>3)</sup> dB(A)	Weight ca. lbs
				V		A		Vacuum inch H2O	Compressor inch H2O		
<b>3~ 50/60 Hz IP55 insulation material class F</b>											
A 110	3BA1100-7AT06	50	0.27	200D ... 240D	345Y ... 415Y	1.0D	0.6 Y	-24	28	50	13
A 111	3BA1100-7AT06	60	0.31	220D ... 250D	415Y ... 460Y	1.0D	0.6 Y	-30	32	53	13
<b>1~ 50/60 Hz IP55 with attached capacitor for continuous operation</b>											
A 110s	3BA1100-7AS05	50	0.27	115	230	3.0D	1.5 Y	-24	28	50	13
A 111s	3BA1100-7AS05	60	0.31	115	230	2.6D	1.3 Y	-30	32	53	13

Suitable for 208 Volt Operation

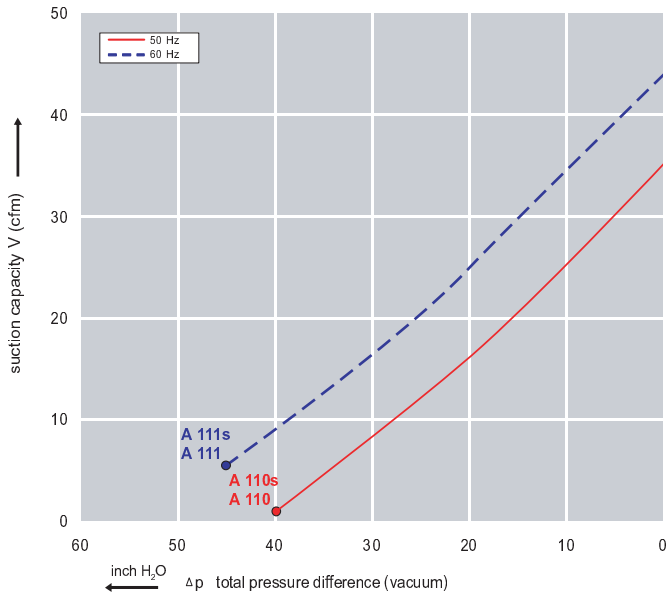
All curves are rated at 14.7 psia and 68°F ambient conditions and are reported in SCFM referenced to 68°F and 14.696 psia sea level conditions. Curve values are nominal, actual performance may vary by up to 10% of the values indicated. For inlet temperatures above approximately 80° F or for handling gases other than air, please contact your Airtech sales representative for assistance.



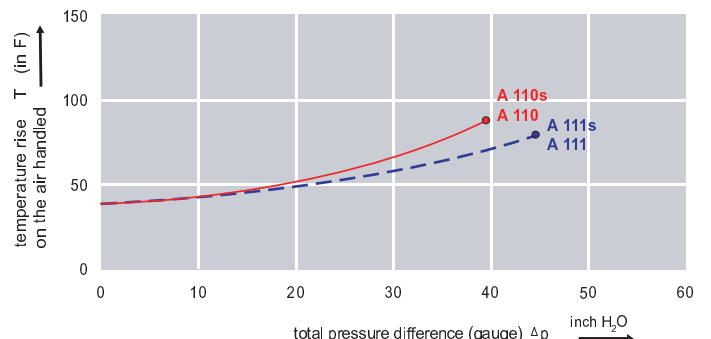
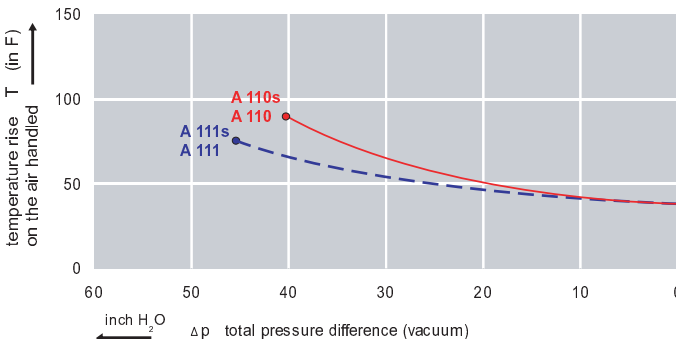
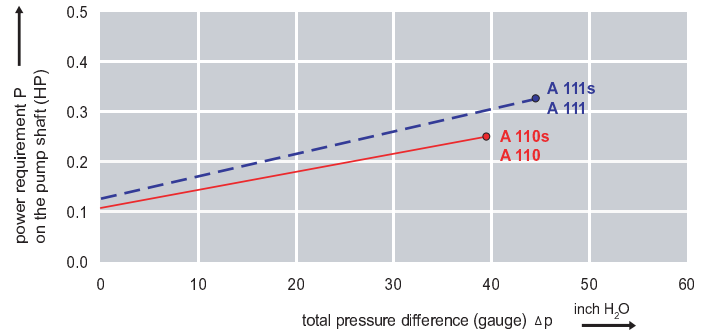
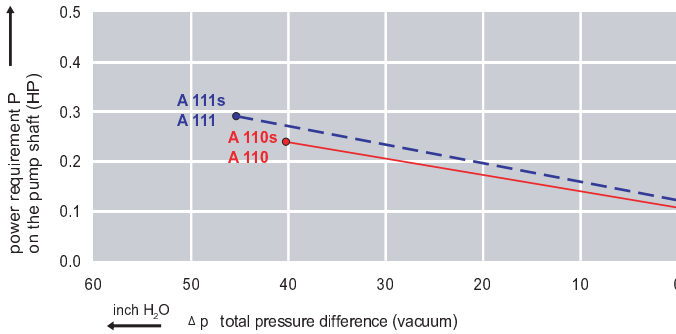
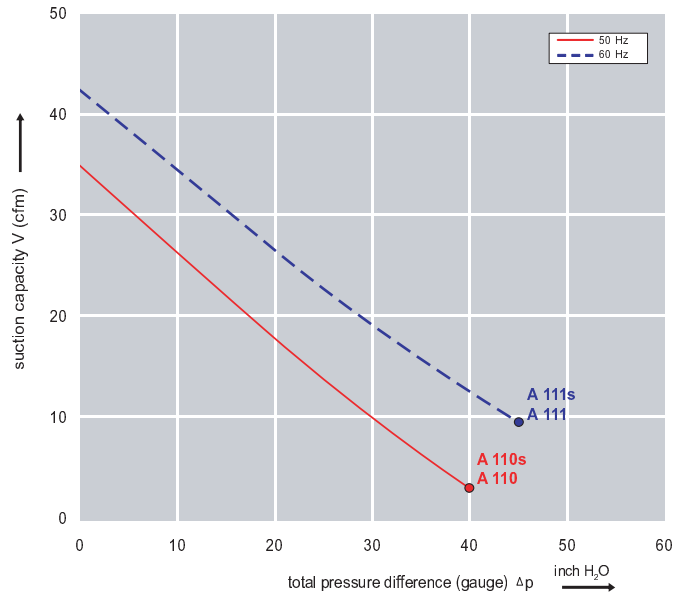
### Features:

- Cooler running, outboard bearing provides maintenance-free operation
- Environmentally friendly oil-free technology
- Extremely quiet operation
- All motors are standard TEFC with Class F insulation, UL recognized, CE Compliant  
*Explosion-Proof motors available*
- Custom construction blowers are available
- Rugged die cast aluminum construction

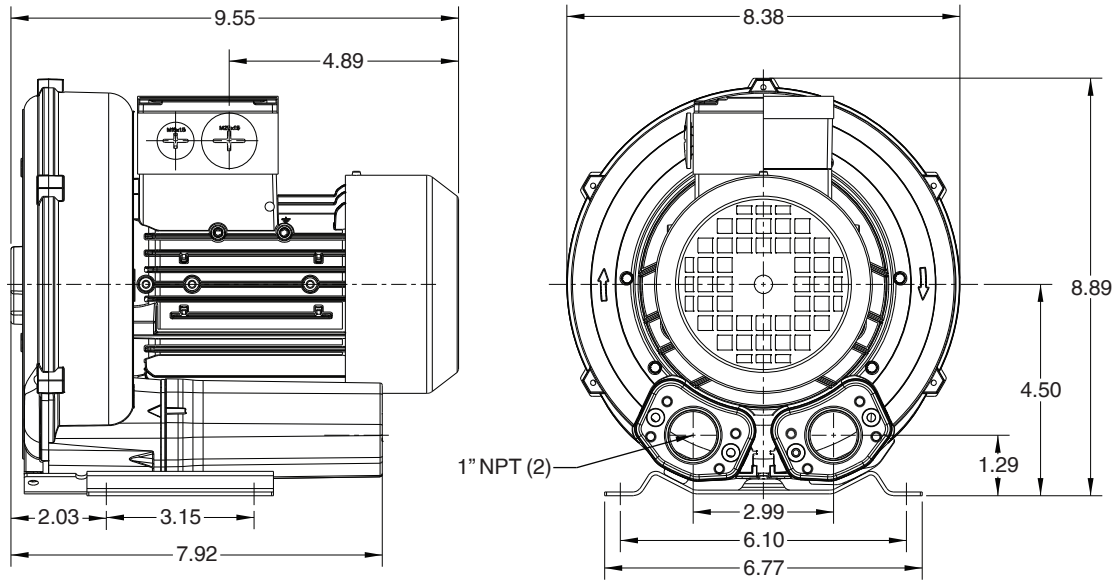
Performance curve for Vacuum pump



Performance curve for Compressor



### Dimensions: (inches)



### Relief valve:

VC51Z (Vacuum)  
PC51Z (Pressure)

### Filter:

ATF-125-1337  
(Vacuum)  
AFS-20-125-10  
(Pressure)

Specifications subject to change without notice. Please contact factory for specification updates.

### Selection & Ordering Data - Type 3BA1200

Curve No.	Order No.	Fre- quency Hz	Rated power HP	Input voltage		Input current		Permissible total differential pressure <sup>2)</sup>		Sound pressure level <sup>3)</sup> dB(A)	Weight ca. lbs
				V		A		Vacuum inch H2O	Compressor inch H2O		
<b>3~ 50/60 Hz IP55 insulation material class F</b>											
A 110	3BA1200-7AT06	50	0.33	200D ... 240D	345Y ... 415Y	1.6D	0.7 Y	-40	40	50	15
A 111	3BA1200-7AT06	60	0.38	220D ... 250D	415Y ... 460Y	1.3D	0.9 Y	-45	45	53	15
<b>1~ 50/60 Hz IP55 with attached capacitor for continuous operation</b>											
A 110s	3BA1200-7AS05	50	0.33	115	230	3.5D	1.7 Y	-40	40	50	15
A 111s	3BA1200-7AS05	60	0.38	115	230	5.0D	2.8 Y	-45	45	53	15

Suitable for 208 Volt Operation

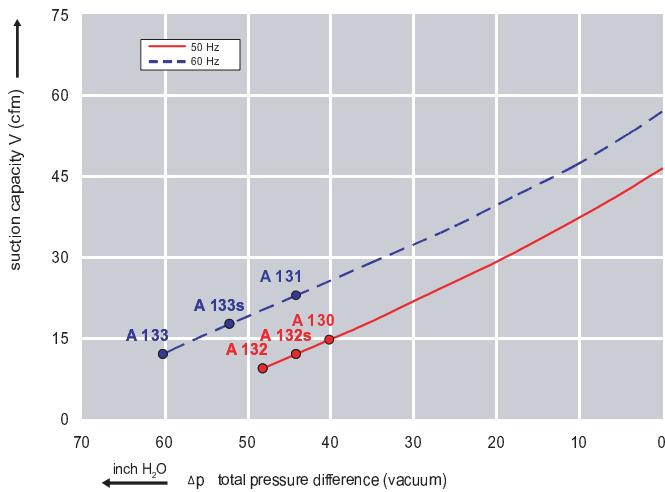
All curves are rated at 14.7 psia and 68°F ambient conditions and are reported in SCFM referenced to 68°F and 14.696 psia sea level conditions. Curve values are nominal, actual performance may vary by up to 10% of the values indicated. For inlet temperatures above approximately 80 °F or for handling gases other than air, please contact your Airtech sales representative for assistance.



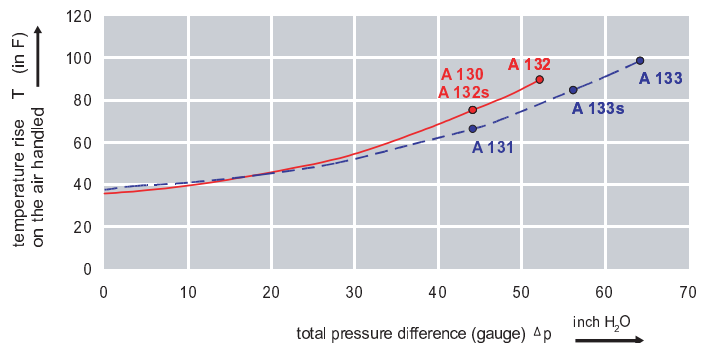
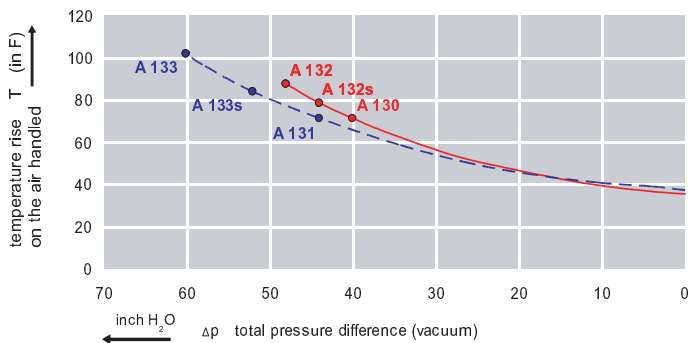
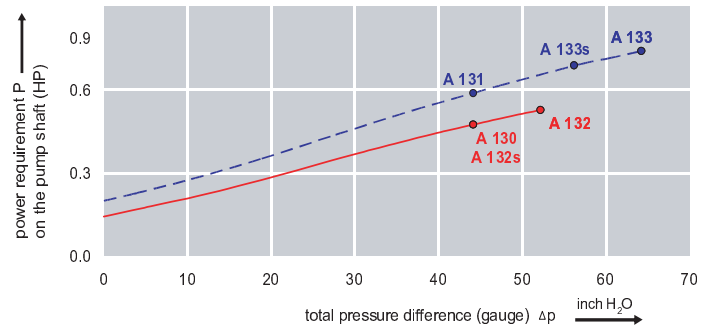
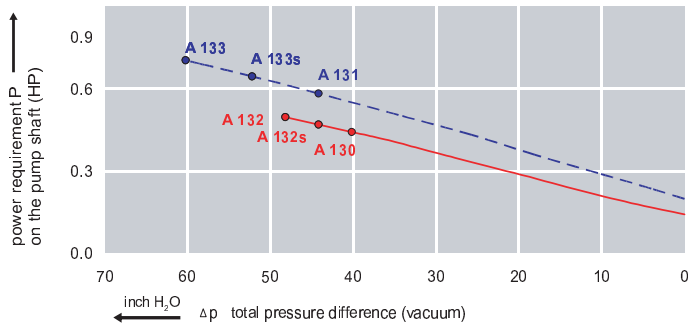
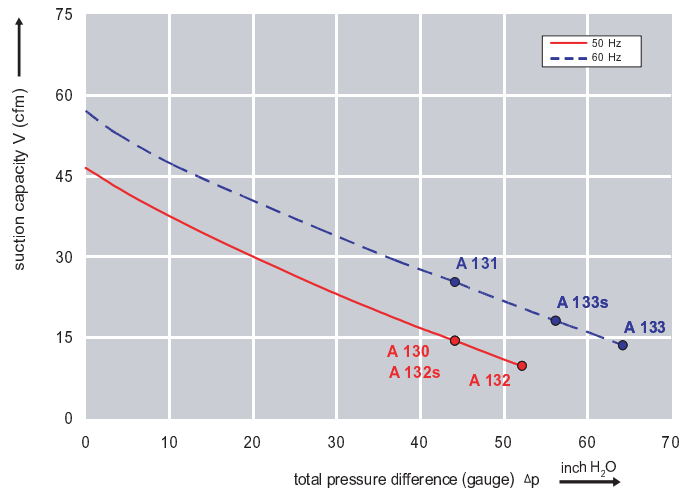
### Features:

- Cooler running, outboard bearing provides maintenance-free operation
- Environmentally friendly oil-free technology
- Extremely quiet operation
- All motors are standard TEFC with Class F insulation, UL recognized, CE Compliant  
*Explosion-Proof motors available*
- Custom construction blowers are available
- Rugged die cast aluminum construction

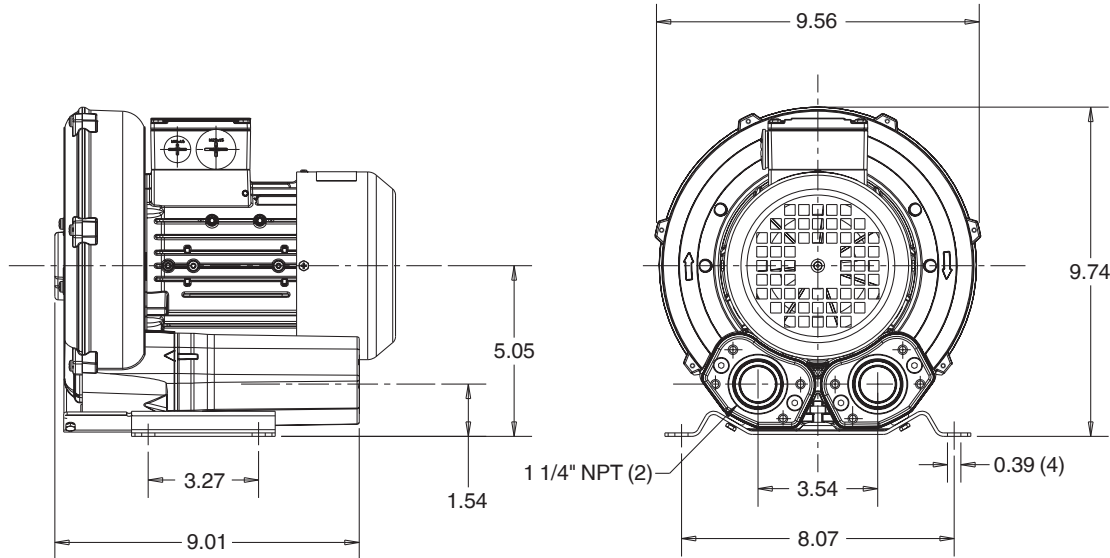
Performance curve for Vacuum pump



Performance curve for Compressor



### Dimensions: (inches)



### Recommended Accessories:

#### Relief valve:

VC51Z (Vacuum)  
PC51Z (Pressure)

#### Filter:

ATF-125-1337  
(Vacuum)  
AFS-20-125-10  
(Pressure)

Specifications subject to change without notice. Please contact factory for specification updates.

### Selection & Ordering Data - Type 3BA1300

Curve No.	Order No.	Fre- quency Hz	Rated power HP	Input voltage		Input current A	Permissible total differential pressure		Sound pressure level dB(A)	Weight lbs	
				V			Vacuum inch H2O	Compressor inch H2O			
<b>3~ 50/60 Hz IP55 insulation material class F</b>											
A 130	3BA1300-7AT06	50	0.34	200D ... 240D	345Y ... 415Y	2.1D	1.2 Y	-40	44	53	18
A 131	3BA1300-7AT06	60	0.39	220D ... 250D	415Y ... 460Y	1.74D	1.0 Y	-44	44	56	18
A 132	3BA1300-7AT16	50	0.54	200D ... 240D	345Y ... 415Y	2.6D	1.5 Y	-48	52	53	22
A 133	3BA1300-7AT16	60	0.67	220D ... 250D	415Y ... 460Y	2.6D	1.5 Y	-60	64	56	22
<b>1~ 50/60 Hz IP55 with attached capacitor for continuous operation</b>											
A 132s	3BA1300-7AS15	50	0.50	115	230	5.4	2.7	-44	44	53	22
A 133s	3BA1300-7AS15	60	0.60	115	230	6.0	3.0	-52	56	56	22

Suitable for 208 Volt Operation

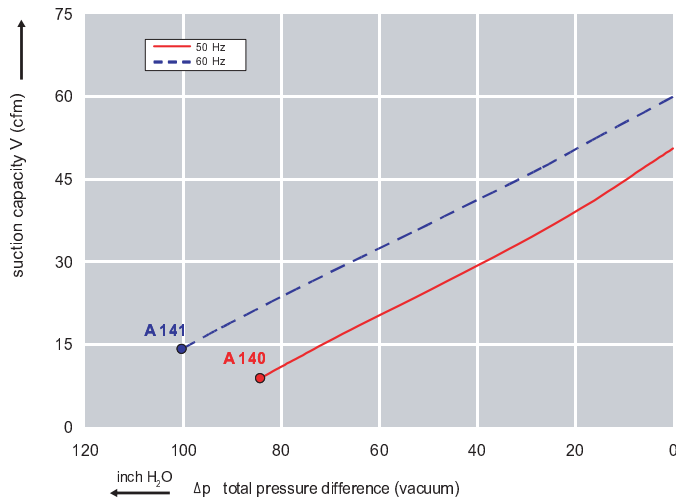
All curves are rated at 14.7 psia and 68° F ambient conditions and are reported in SCFM referenced to 68° F and 14.696 psia sea level conditions. Curve values are nominal, actual performance may vary by up to 10% of the values indicated. For inlet temperatures above approximately 80 °F or for handling gases other than air, please contact your Airtech sales representative for assistance.

### Features:

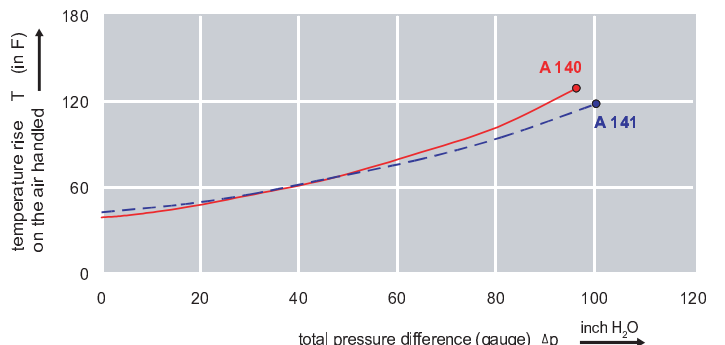
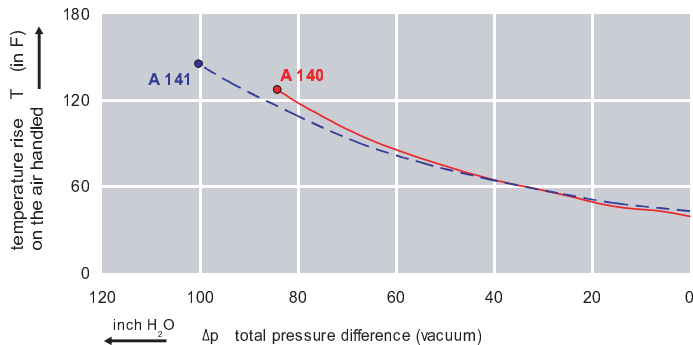
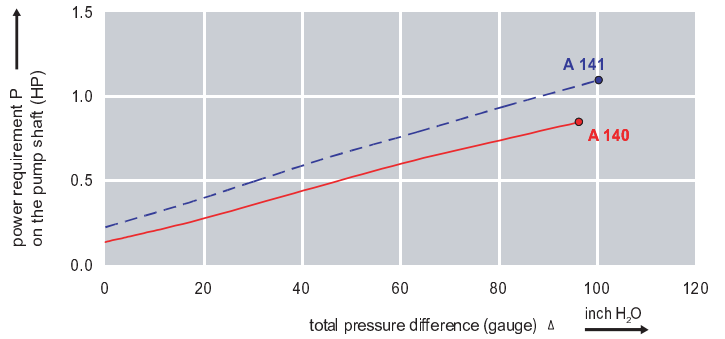
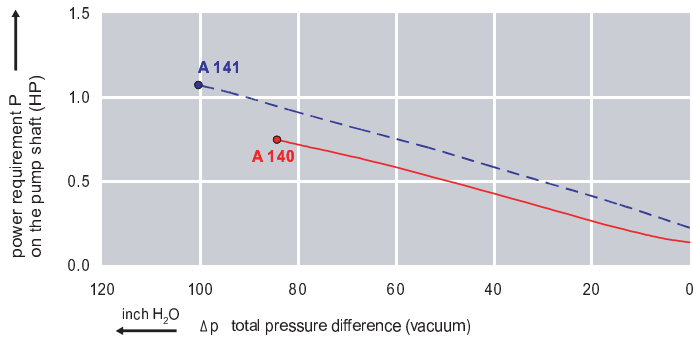
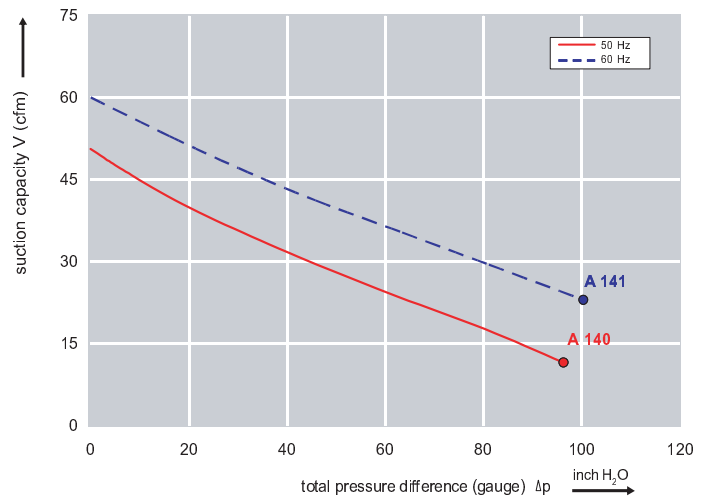


- Cooler running, outboard bearing provides maintenance-free operation
- Environmentally friendly oil-free technology
- Extremely quiet operation
- All motors are standard TEFC with Class F insulation, UL recognized, CE Compliant  
*Explosion-Proof motors available*
- Custom construction blowers are available
- Rugged die cast aluminum construction

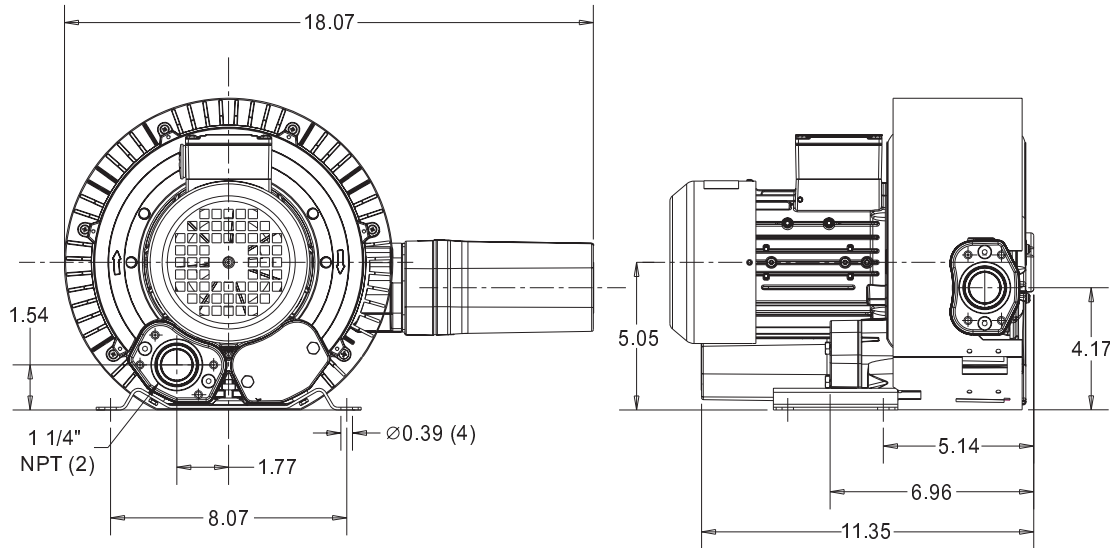
Performance curve for Vacuum pump



Performance curve for Compressor



### Dimensions: (inches)



### Recommended Accessories:

#### Relief valve:

VC51Z (Vacuum)  
PC51Z (Pressure)

#### Filter:

ATF-125-1337  
(Vacuum)  
AFS-20-125-10  
(Pressure)

Specifications subject to change without notice. Please contact factory for specification updates.

### Selection & Ordering Data - Type 3BA1310

Curve No.	Order No.	Fre- quency Hz	Rated power HP	Input voltage		Input current A	Permissible total differential pressure		Sound pressure level dB(A)	Weight lbs	
				V			Vacuum inch H2O	Compressor inch H2O			
<b>3~ 50/60 Hz IP55 insulation material class F</b>											
A 140	3BA1310-7AT26	50	0.94	200D ... 240D	345Y ... 415Y	3.8 D	2.2 Y	-84	96	55	31
A 141	3BA1310-7AT26	60	1.11	220D ... 250D	415Y ... 460Y	3.75D	2.15Y	-100	100	61	31

Suitable for 208 Volt Operation

All curves are rated at 14.7 psia and 68°F ambient conditions and are reported in SCFM referenced to 68°F and 14.696 psia sea level conditions. Curve values are nominal, actual performance may vary by up to 10% of the values indicated. For inlet temperatures above approximately 80 °F or for handling gases other than air, please contact your Airtech sales representative for assistance.

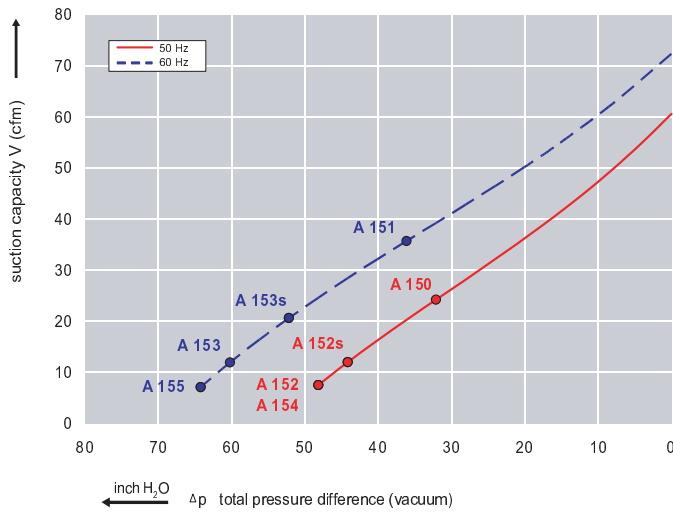


### Features:

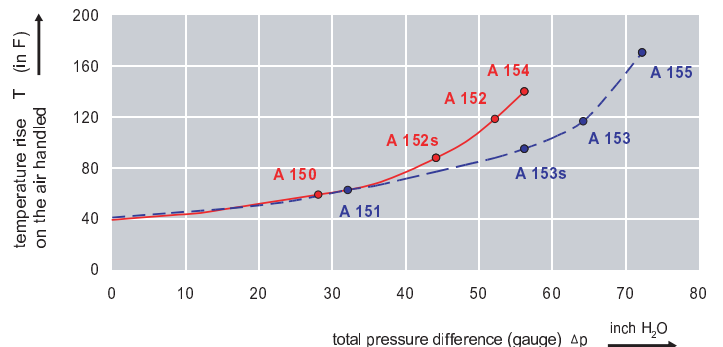
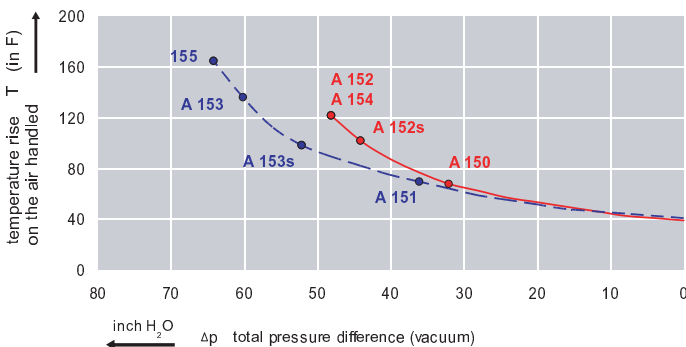
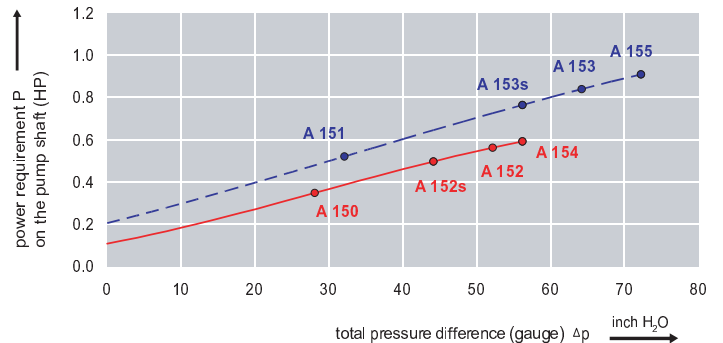
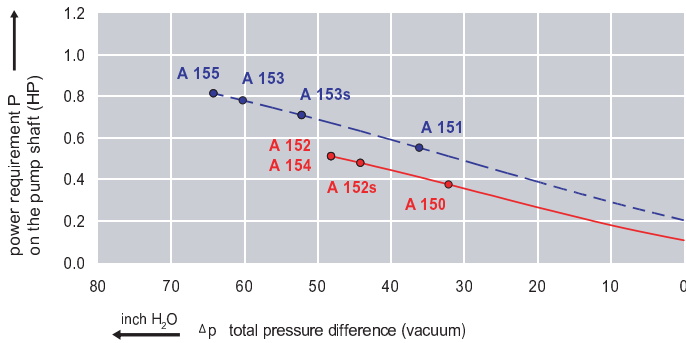
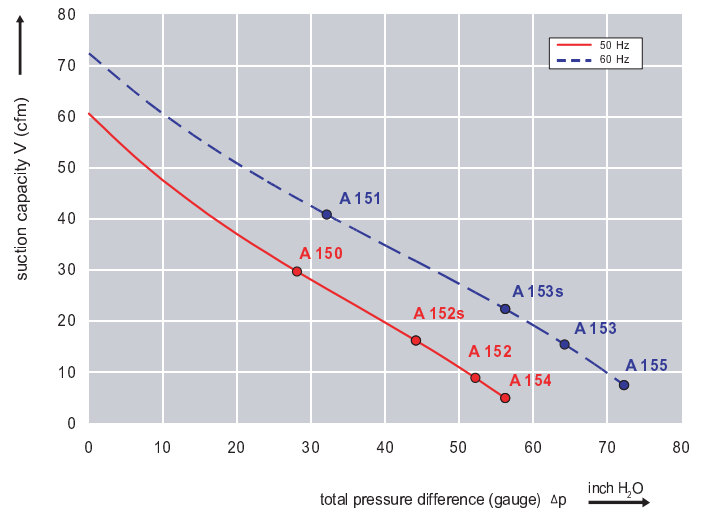


- Cooler running, outboard bearing provides maintenance-free operation
- Environmentally friendly oil-free technology
- Extremely quiet operation
- All motors are standard TEFC with Class F insulation, UL recognized, CE Compliant  
*Explosion-Proof motors available*
- Custom construction blowers are available
- Rugged die cast aluminum construction

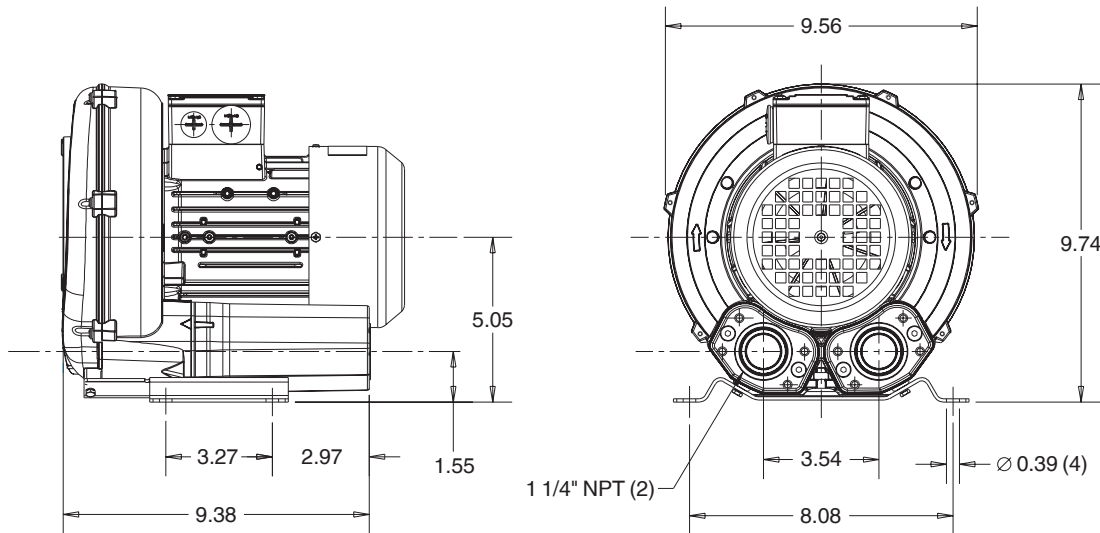
Performance curve for Vacuum pump



Performance curve for Compressor



### Dimensions: (inches)



### Recommended Accessories:

#### Relief valve:

VC51Z (Vacuum)  
PC51Z (Pressure)

#### Filter:

ATF-125-1337 (Vacuum)  
AFS-20-125-10 (Pressure)

Specifications subject to change without notice. Please contact factory for specification updates.

### Selection & Ordering Data - Type 3BA1330

Curve No.	Order No.	Fre- quency Hz	Rated power HP	Input voltage		Input current A	Permissible total differential pressure <sup>2)</sup>		Sound pressure level <sup>3)</sup> dB(A)	Weight ca. lbs	
				V			Vacuum inch H2O	Compressor inch H2O			
<b>3~ 50/60 Hz IP55 insulation material class F</b>											
A 150	3BA1330-7AT06	50	0.34	200D ... 240D	345Y ... 415Y	2.1 D	1.2 Y	-32	28	54	23
A 151	3BA1330-7AT06	60	0.39	220D ... 250D	415Y ... 460Y	1.74D	1.0 Y	-36	32	57	19
A 152	3BA1330-7AT16	50	0.54	200D ... 240D	345Y ... 415Y	2.6 D	1.5 Y	-48	52	54	23
A 153	3BA1330-7AT16	60	0.67	220D ... 250D	415Y ... 460Y	2.6 D	1.5 Y	-60	64	57	23
A 154	3BA1330-7AT26	50	0.94	200D ... 240D	345Y ... 415Y	3.8 D	2.2 Y	-48	56	54	25
A 155	3BA1330-7AT26	60	1.11	220D ... 250D	415Y ... 460Y	3.75D	2.15Y	-64	72	57	25
<b>3~ 50/60 Hz IP55 insulation material class F</b>											
A 150	3BA1330-7AT05	50	0.34	500D		0.72D		-32	28	54	23
A 151	3BA1330-7AT05	60	0.39	575D		0.76D		-36	32	57	19
A 152	3BA1330-7AT15	50	0.54	500D		1.0 D		-48	52	54	23
A 153	3BA1330-7AT15	60	0.67	575D		1.1 D		-60	64	57	23
A 154	3BA1330-7AT25	50	0.94	500D		1.88D		-48	56	54	25
A 155	3BA1330-7AT25	60	1.11	575D		1.76D		-64	72	57	25
<b>1~ 50/60 Hz IP55 with attached capacitor for continuous operation</b>											
A 152s	3BA1330-7AS15	50	0.50	115	230	5.4	2.7	-44	44	54	23
A 153s	3BA1330-7AS15	60	0.60	115	230	6.0	3.0	-52	56	57	23

Suitable for 208 Volt Operation

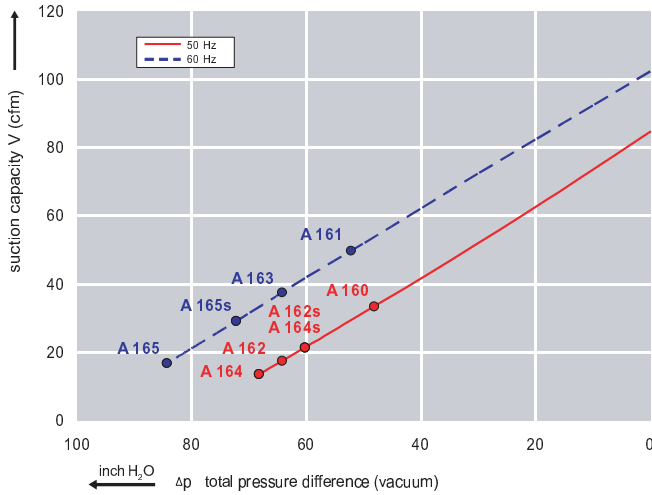
All curves are rated at 14.7 psia and 68° F ambient conditions and are reported in SCFM referenced to 68° F and 14.696 psia sea level conditions. Curve values are nominal, actual performance may vary by up to 10% of the values indicated. For inlet temperatures above approximately 80 °F or for handling gases other than air, please contact your Airtech sales representative for assistance.



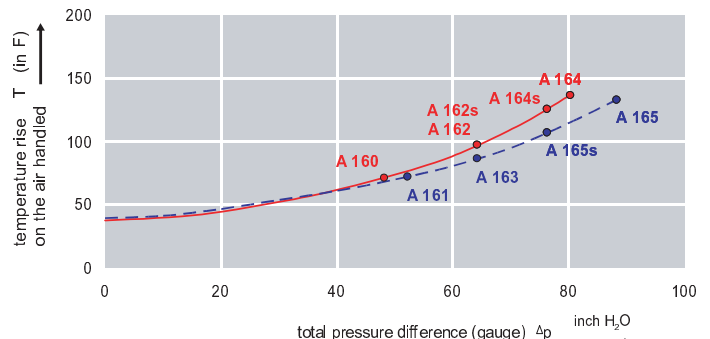
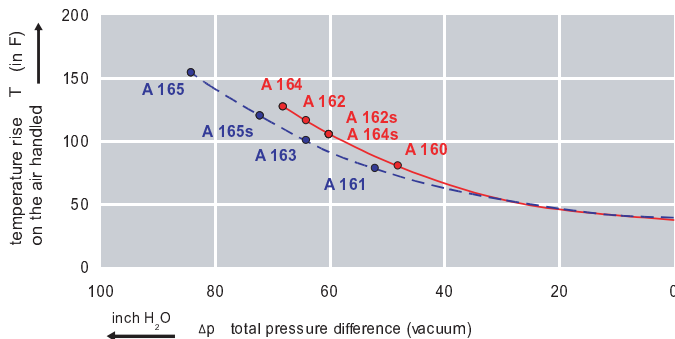
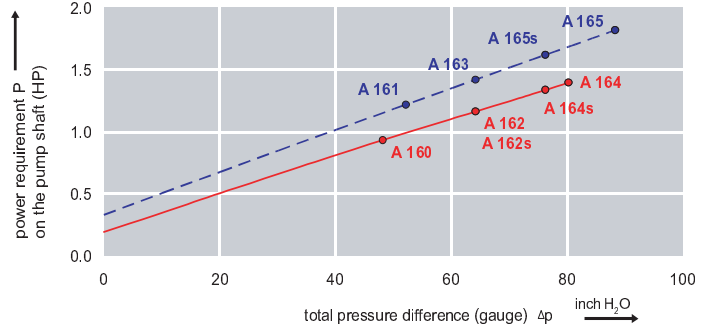
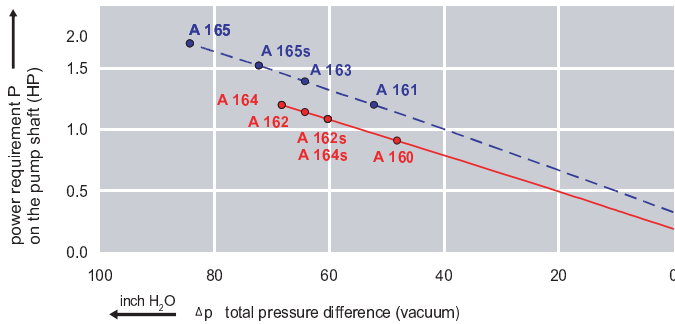
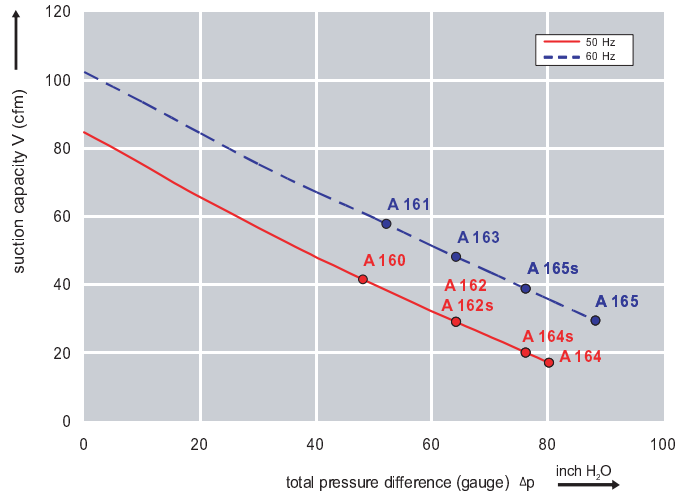
### Features:

- Cooler running, outboard bearing provides maintenance-free operation
- Environmentally friendly oil-free technology
- Extremely quiet operation
- All motors are standard TEFC with Class F insulation, UL recognized, CE Compliant  
*Explosion-Proof motors available*
- Custom construction blowers are available
- Rugged die cast aluminum construction

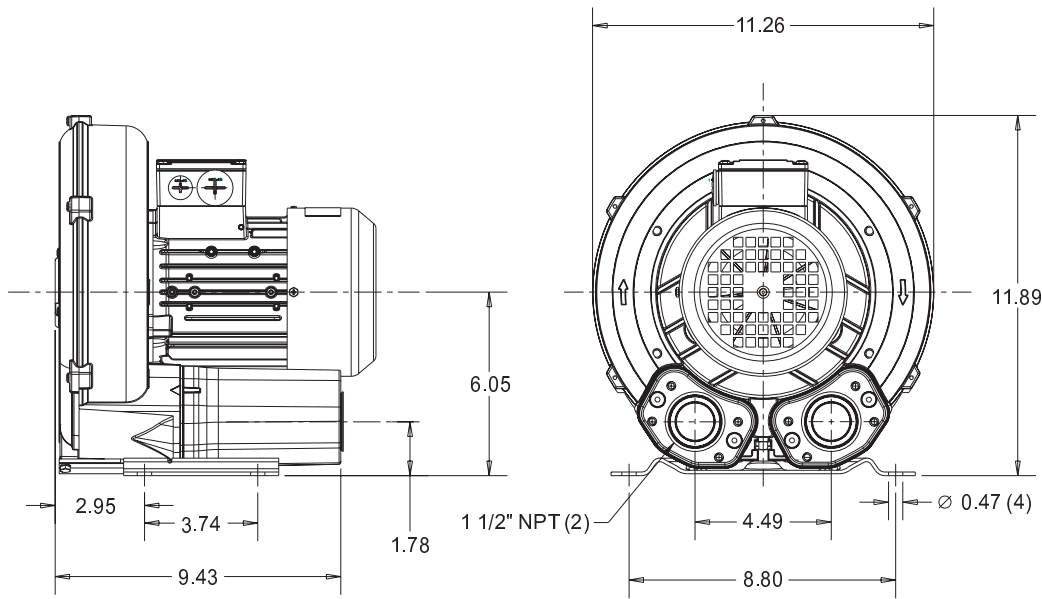
Performance curve for Vacuum pump



Performance curve for Compressor



### Dimensions: (inches)



### Recommended Accessories:

#### Relief valve:

VC51Z (Vacuum)  
PC51Z (Pressure)

#### Filter:

ATF-150-1337 (Vacuum)  
AFS-20-150-10 (Pressure)

Specifications subject to change without notice. Please contact factory for specification updates.

### Selection & Ordering Data - Type 3BA1400

Curve No.	Order No.	Fre- quency Hz	Rated power HP	Input voltage		Input current		Permissible total differential pressure		Sound pressure level dB(A)	Weight lbs
				V		A		Vacuum inch H2O	Compressor inch H2O		
<b>3~ 50/60 Hz IP55 insulation material class F</b>											
A 160	3BA1400-7AT06	50	0.94	200D ... 240D	345Y ... 415Y	3.8 D	2.2 Y	-48	48	63	29
A 161	3BA1400-7AT06	60	1.11	220D ... 250D	415Y ... 460Y	3.75D	2.15Y	-52	52	64	29
A 162	3BA1400-7AT16	50	1.14	200D ... 240D	345Y ... 415Y	4.2 D	2.4 Y	-64	64	63	33
A 163	3BA1400-7AT16	60	1.27	220D ... 250D	415Y ... 460Y	4.0 D	2.3 Y	-64	64	64	33
A 164	3BA1400-7AT26	50	1.74	200D ... 240D	345Y ... 415Y	5.7 D	3.3 Y	-68	80	63	35
A 165	3BA1400-7AT26	60	2.01	220D ... 250D	415Y ... 460Y	5.5 D	3.2 Y	-84	88	64	35
<b>1~ 50/60 Hz IP55 with capacitor for continuous operation</b>											
A 164s	3BA1400-7AS25	50	1.47	115	230	13	6.5	-60	76	63	35
A 165s	3BA1400-7AS25	60	1.74	115	230	14	7.0	-72	76	64	35

Suitable for 208 Volt Operation

All curves are rated at 14.7 psia and 68°F ambient conditions and are reported in SCFM referenced to 68°F and 14.696 psia sea level conditions. Curve values are nominal, actual performance may vary by up to 10% of the values indicated. For inlet temperatures above approximately 80 °F or for handling gases other than air, please contact your Airtech sales representative for assistance.

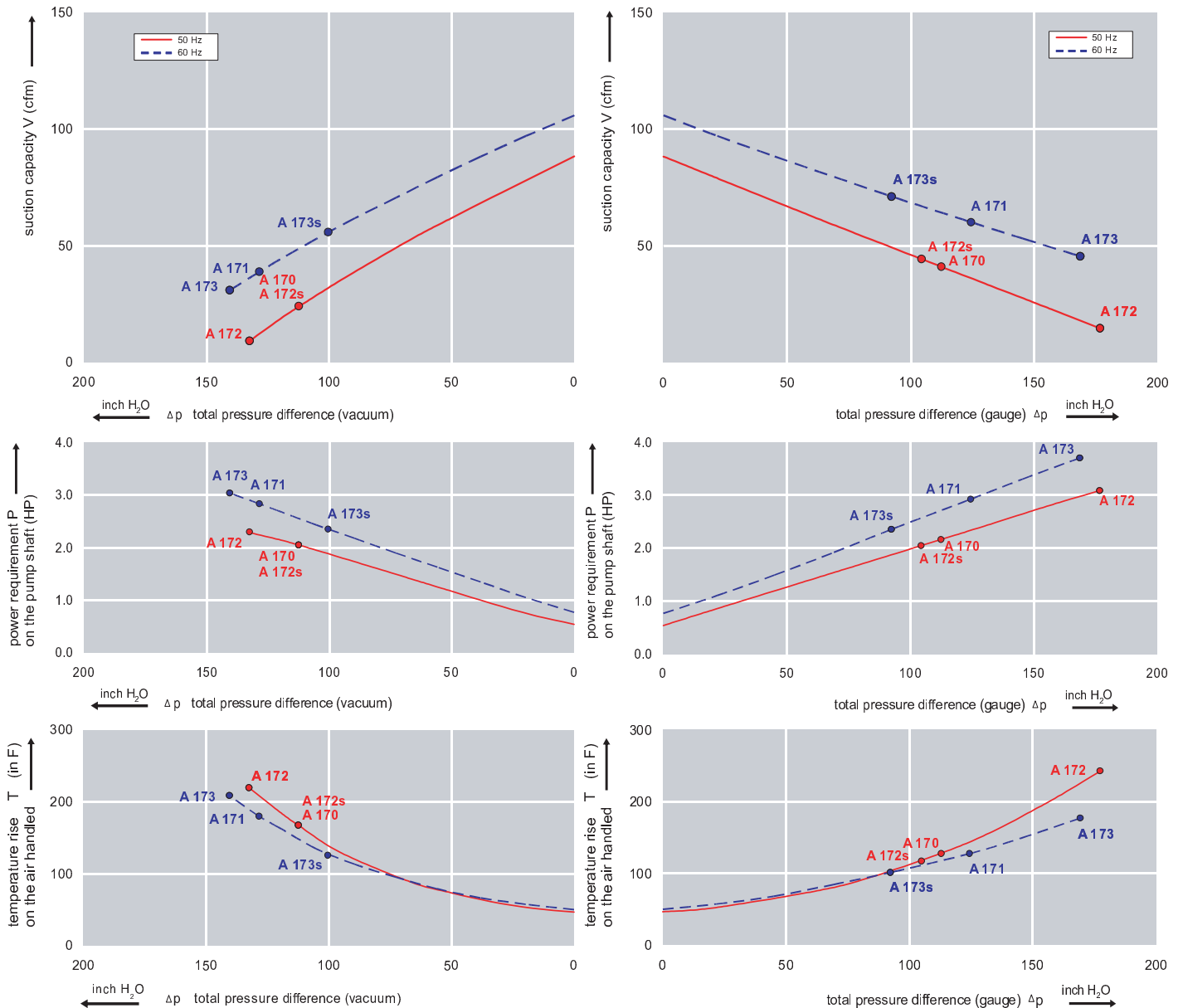


### Features:

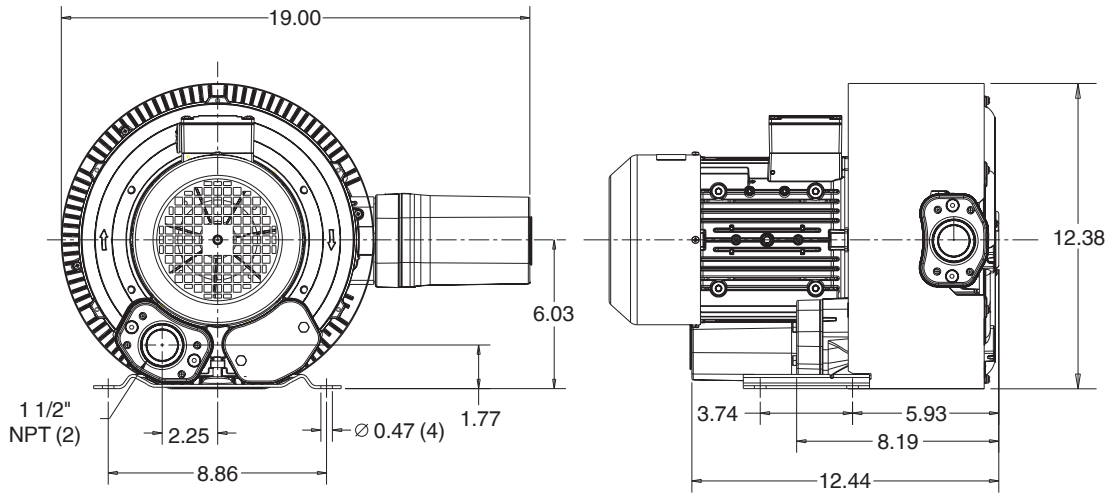
- Cooler running, outboard bearing provides maintenance-free operation
- Environmentally friendly oil-free technology
- Extremely quiet operation
- All motors are standard TEFC with Class F insulation, UL recognized, CE Compliant  
*Explosion-Proof motors available*
- Custom construction blowers are available
- Rugged die cast aluminum construction

Performance curve for Vacuum pump

Performance curve for Compressor



### Dimensions: (inches)



### Recommended Accessories:

#### Relief valve:

VC51Z (Vacuum)  
PC51Z (Pressure)

#### Filter:

ATF-150-1337 (Vacuum)  
AFS-20-150-10 (Pressure)

Specifications subject to change without notice. Please contact factory for specification updates.

### Selection & Ordering Data - Type 3BA1410

Curve No.	Order No.	Fre- quency Hz	Rated power HP	Input voltage		Input current		Permissible total differential pressure		Sound pressure dB(A)	Weight lbs
				V		A		Vacuum inch H2O	Compressor inch H2O		
<b>3~ 50/60 Hz IP55 insulation material class F</b>											
A 170	3BA1410-7AT36	50	2.1	200D ... 240D	345Y ... 415Y	7.5D	4.3Y	-112	112	66	53
A 171	3BA1410-7AT36	60	2.75	220D ... 250D	415Y ... 460Y	7.5D	4.4Y	-128	124	69	53
A 172	3BA1410-7AT46	50	2.95	200D ... 240D	345Y ... 415Y	9.7D	5.6Y	-132	177	66	59
A 173	3BA1410-7AT46	60	3.42	220D ... 250D	415Y ... 460Y	9.0D	5.3Y	-141	169	69	59
<b>1~ 50/60 Hz IP55 with attached capacitor for continuous operation</b>											
A 172s	3BA1410-7AS45	50	2.0	115	230	22	11	-112	104	66	59
A 173s	3BA1410-7AS45	60	2.35	115	230	24	12	-100	92	69	59

Suitable for 208 Volt Operation

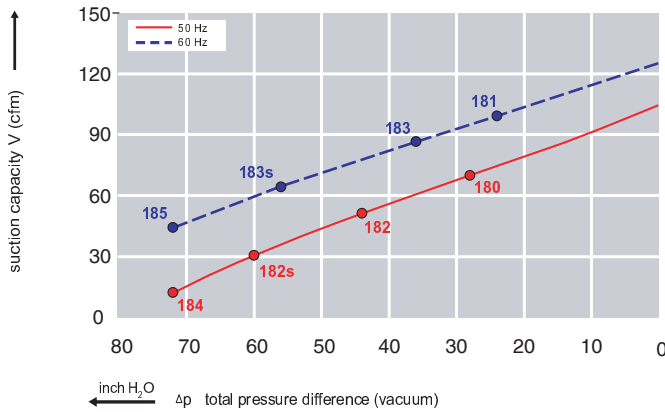
All curves are rated at 14.7 psia and 68° F ambient conditions and are reported in SCFM referenced to 68° F and 14.696 psia sea level conditions. Curve values are nominal, actual performance may vary by up to 10% of the values indicated. For inlet temperatures above approximately 80 °F or for handling gases other than air, please contact your Airtech sales representative for assistance.



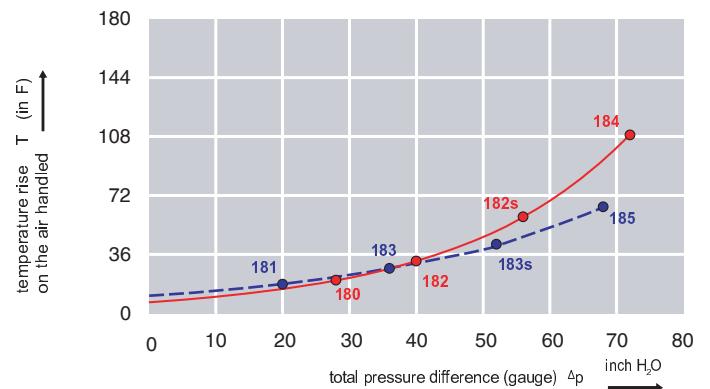
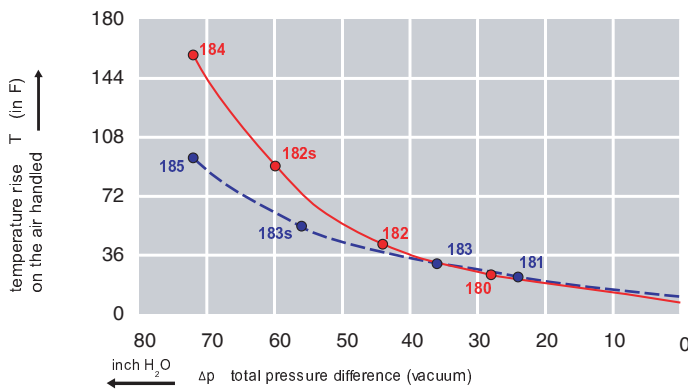
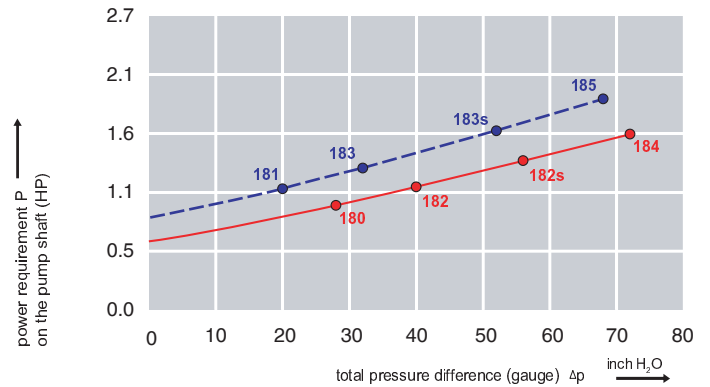
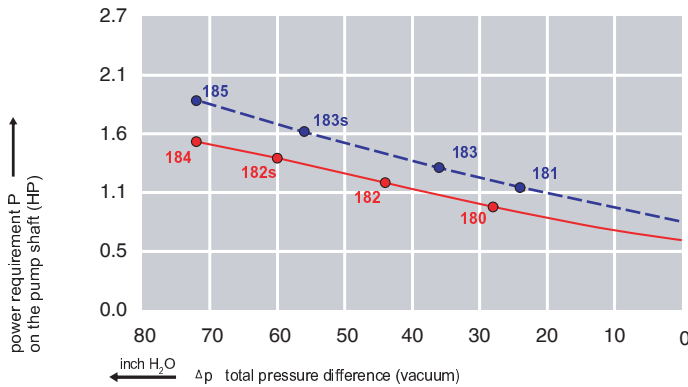
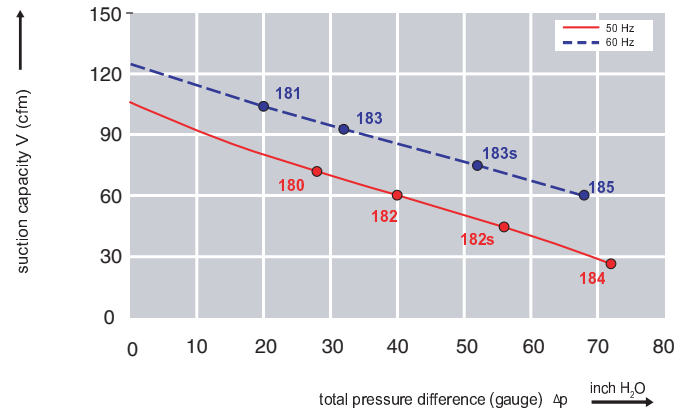
### Features:

- Cooler running, outboard bearing provides maintenance-free operation
- Environmentally friendly oil-free technology
- Extremely quiet operation
- All motors are standard TEFC with Class F insulation, UL recognized, CE Compliant  
*Explosion-Proof motors available*
- Custom construction blowers are available
- Rugged die cast aluminum construction

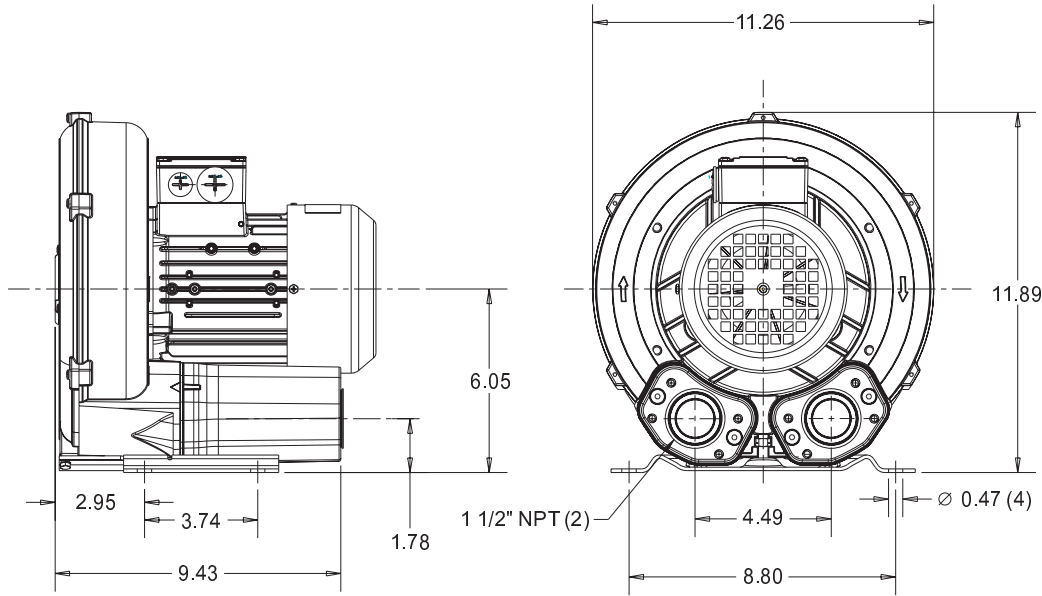
Performance curve for Vacuum pump



Performance curve for Compressor



### Dimensions: (inches)



### Recommended Accessories:

#### Relief valve:

VC51Z (Vacuum)

PC51Z (Pressure)

#### Filter:

ATF-150-1337  
(Vacuum)

AFS-20-150-10  
(Pressure)

Specifications subject to change without notice. Please contact factory for specification updates.

### Selection & Ordering Data - Type 3BA1430

Curve No.	Order No.	Fre- quency Hz	Rated power HP	Input voltage		Input current		Permissible total differential pressure		Sound pressure level dB(A)	Weight lbs
				V		A		Vacuum inch H2O	Compressor inch H2O		
<b>3~ 50/60 Hz IP55 insulation material class F</b>											
A 180	3BA1430-7AT06	50	0.93	200D ... 240D	345Y ... 415Y	3.8 D	2.2 Y	-28	28	64	30
A 181	3BA1430-7AT06	60	1.11	220D ... 275D	380Y ... 480Y	3.75D	2.15Y	-24	20	65	30
A 182	3BA1430-7AT16	50	1.13	200D ... 240D	345Y ... 415Y	4.2 D	2.4 Y	-44	40	64	35
A 183	3BA1430-7AT16	60	1.27	220D ... 275D	380Y ... 480Y	4.0 D	2.3 Y	-36	32	65	35
A 184	3BA1430-7AT26	50	1.74	200D ... 240D	345Y ... 415Y	5.7 D	3.3 Y	-72	72	64	37
A 185	3BA1430-7AT26	60	2.01	220D ... 275D	380Y ... 480Y	5.7 D	3.3 Y	-72	68	65	37
<b>1~ 50/60 Hz IP55 with capacitor for continuous operation</b>											
A 182s	3BA1430-7AS24	50	1.47	100/200		16.8	8.4	-60	56	63	35
A 183s	3BA1430-7AS24	60	1.74	100/200		17.2	8.6	-56	52	64	35
A 182s	3BA1430-7AS25	50	1.47	115/230		13.0	6.5	-60	56	63	37
A 183s	3BA1430-7AS25	60	1.74	115/230		14.0	7.0	-56	52	64	37

Suitable for 208 Volt Operation

All curves are rated at 14.7 psia and 68°F ambient conditions and are reported in SCFM referenced to 68°F and 14.696 psia sea level conditions. Curve values are nominal, actual performance may vary by up to 10% of the values indicated. For inlet temperatures above approximately 80 °F or for handling gases other than air, please contact your Airtech sales representative for assistance.

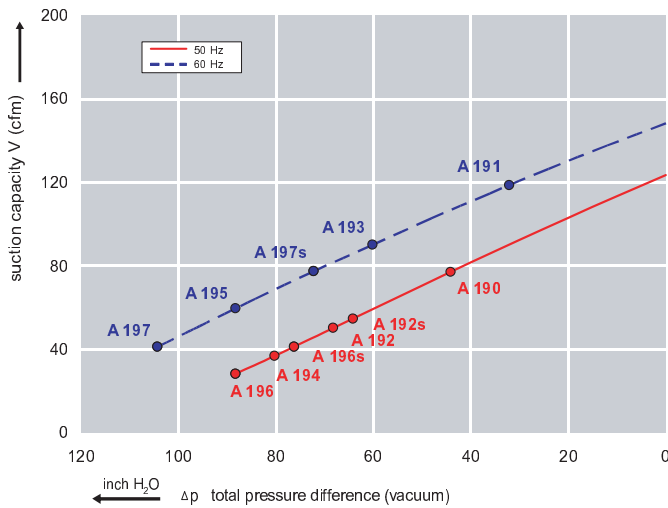




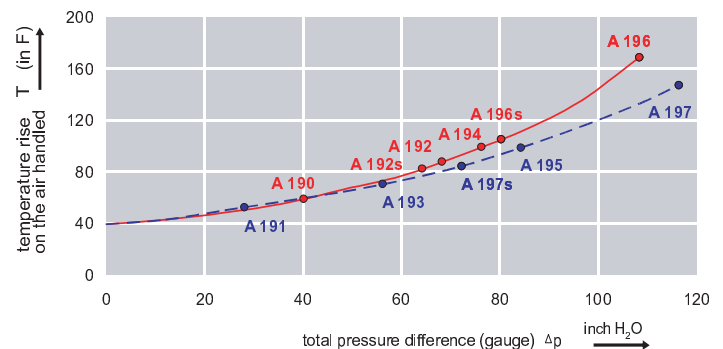
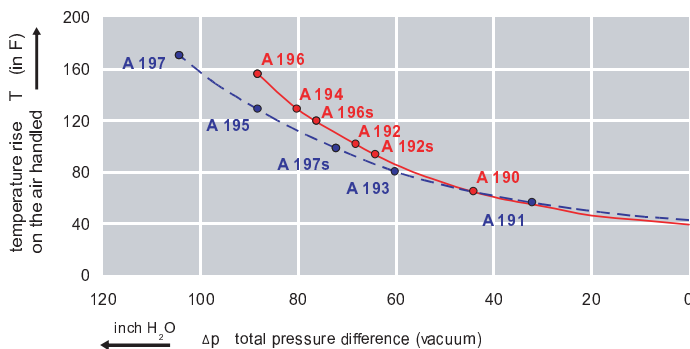
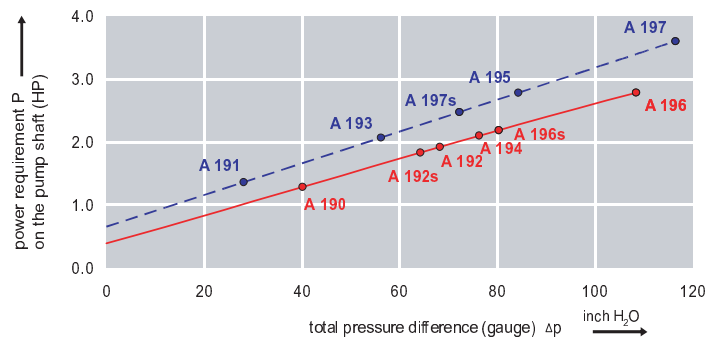
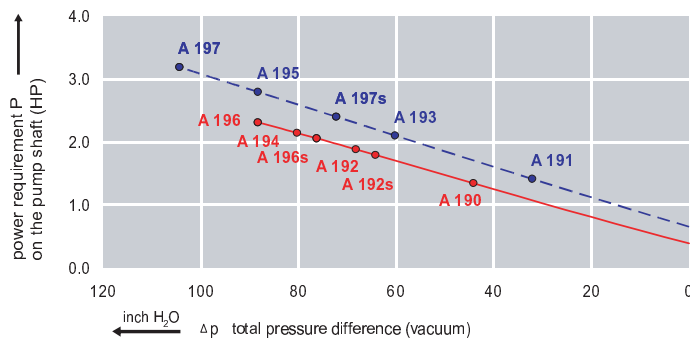
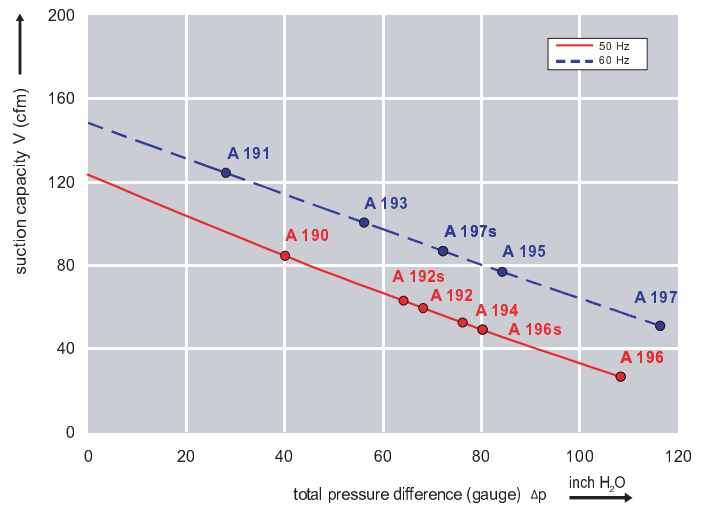
### Features:

- Cooler running, outboard bearing provides maintenance-free operation
- Environmentally friendly oil-free technology
- Extremely quiet operation
- All motors are standard TEFC with Class F insulation, UL recognized, CE Compliant  
*Explosion-Proof motors available*
- Custom construction blowers are available
- Rugged die cast aluminum construction

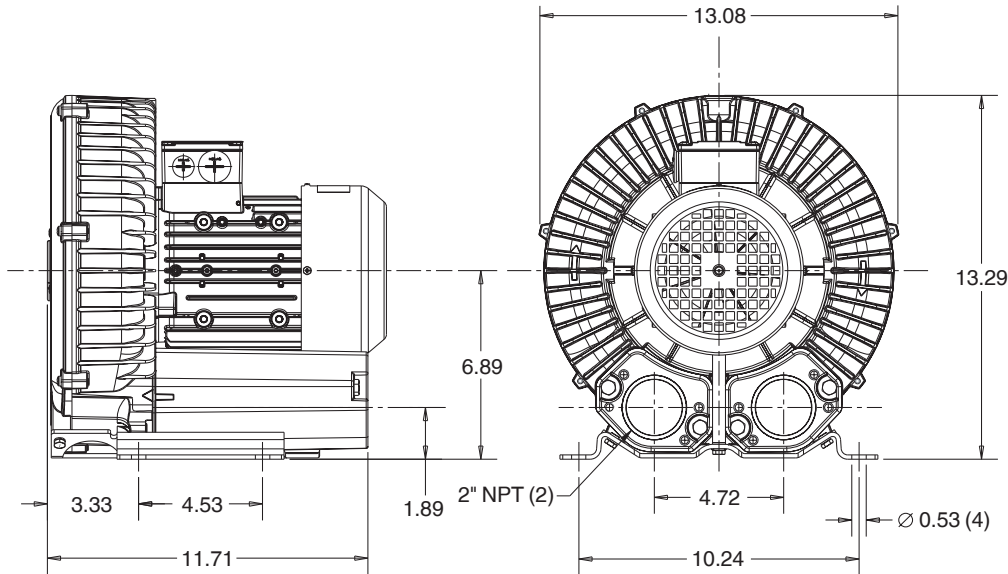
Performance curve for Vacuum pump



Performance curve for Compressor



### Dimensions: (inches)



### Recommended Accessories:

#### Relief valve:

VC61Z (Vacuum)  
PC61Z (Pressure)

#### Filter:

ATF-200-15124/1  
(Vacuum)  
AFS-30-200-10  
(Pressure)

Specifications subject to change without notice. Please contact factory for specification updates.

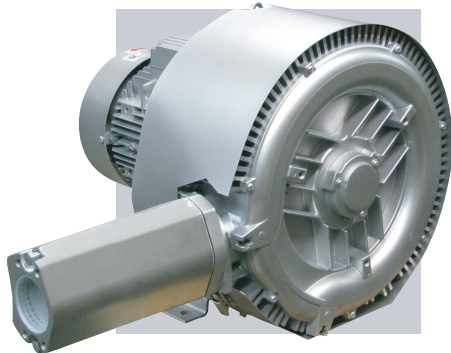
### Selection & Ordering Data - Type 3BA1500

Curve No.	Order No.	Fre- quency Hz	Rated power HP	Input voltage		Input current		Permissible total differential pressure		Sound pressure level dB(A)	Weight lbs
				V		A		Vacuum inch H2O	Compressor inch H2O		
<b>3~ 50/60 Hz IP55 insulation material class F</b>											
A 190	3BA1500-7AT06	50	1.14	200D ... 240D	345Y ... 415Y	4.2D	2.4Y	-44	40	64	40
A 191	3BA1500-7AT06	60	1.27	220D ... 250D	415Y ... 460Y	4.35D	2.5Y	-32	28	70	40
A 192	3BA1500-7AT16	50	1.74	200D ... 240D	345Y ... 415Y	5.7D	3.3Y	-68	68	64	44
A 193	3BA1500-7AT16	60	2.0	220D ... 250D	415Y ... 460Y	5.5D	3.2Y	-60	56	70	44
A 194	3BA1500-7AT26	50	2.14	200D ... 240D	345Y ... 415Y	7.5D	4.3Y	-80	76	64	46
A 195	3BA1500-7AT26	60	2.75	220D ... 250D	415Y ... 460Y	7.5D	4.4Y	-88	84	70	46
A 196	3BA1500-7AT36	50	2.95	200D ... 240D	345Y ... 415Y	9.7D	5.6Y	-88	108	64	55
A 197	3BA1500-7AT36	60	3.42	220D ... 250D	415Y ... 460Y	9.0D	5.3Y	-104	116	70	55
<b>1~ 50/60 Hz IP55 with attached capacitor for continuous operation</b>											
A 196s	3BA1500-7AS35	50	2.0	115	230	22.0	11.0	-76	80	64	48
A 197s	3BA1500-7AS35	60	2.35	115	230	24.0	12.0	-72	72	70	48

Suitable for 208 Volt Operation

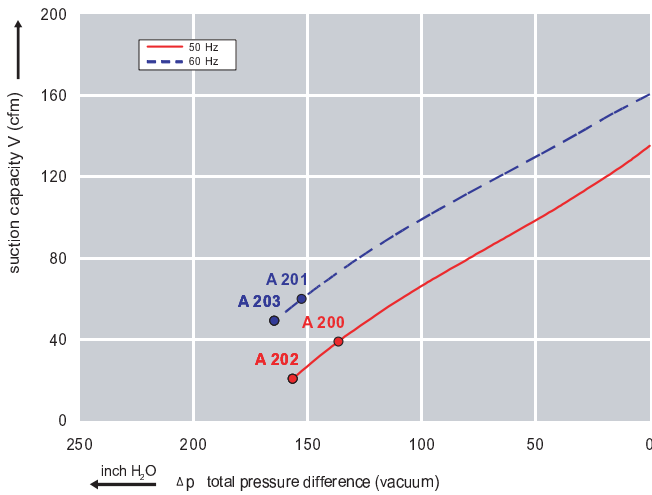
All curves are rated at 14.7 psia and 68°F ambient conditions and are reported in SCFM referenced to 68°F and 14.696 psia sea level conditions. Curve values are nominal, actual performance may vary by up to 10% of the values indicated. For inlet temperatures above approximately 80 °F or for handling gases other than air, please contact your Airtech sales representative for assistance.

### Features:

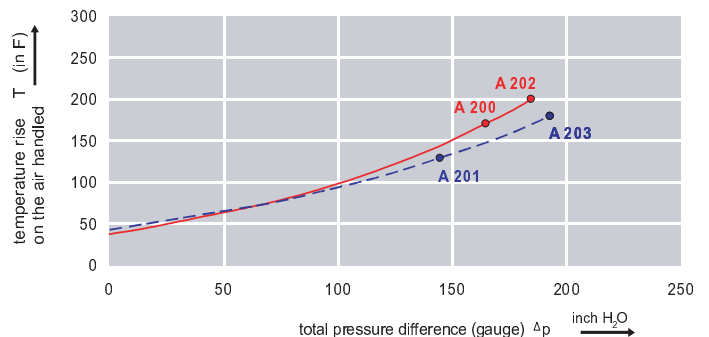
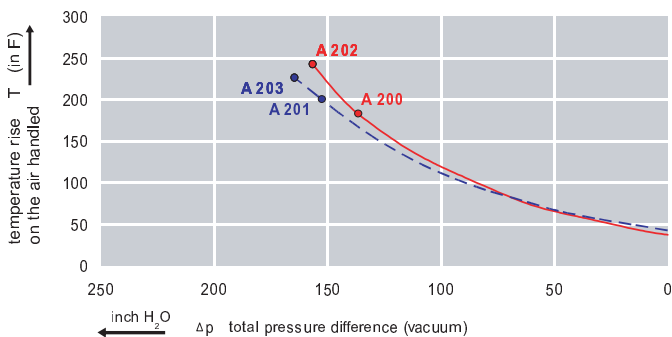
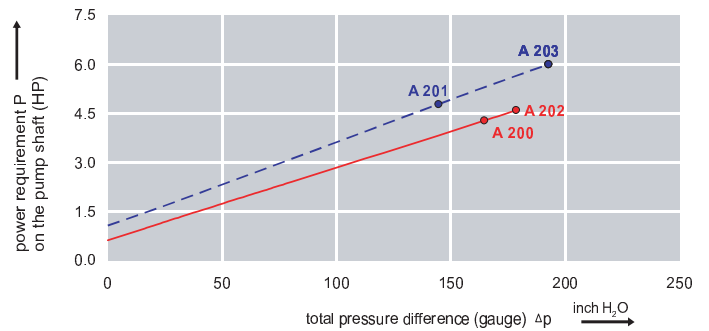
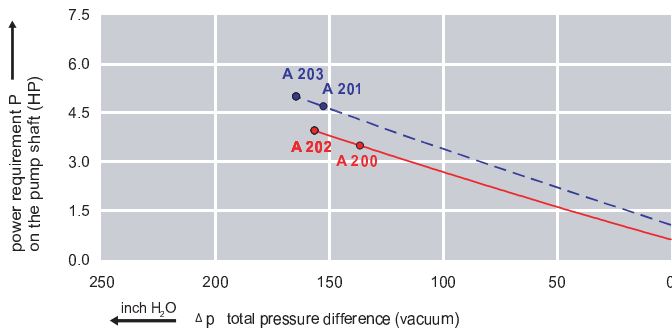
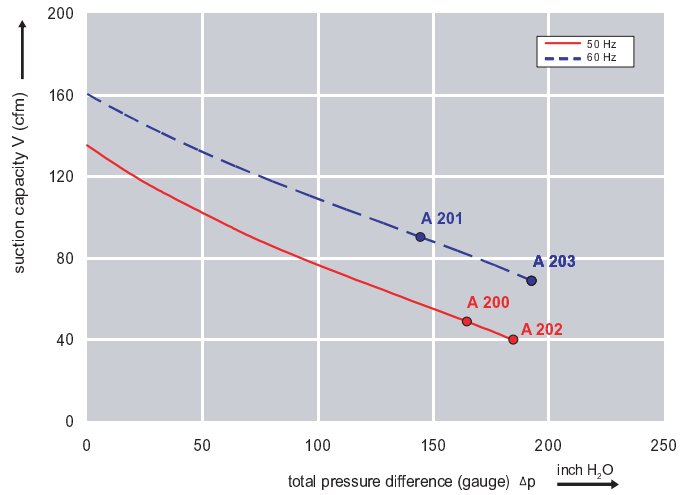


- Cooler running, outboard bearing provides maintenance-free operation
- Environmentally friendly oil-free technology
- Extremely quiet operation
- All motors are standard TEFC with Class F insulation, UL recognized, CE Compliant  
*Explosion-Proof motors available*
- Custom construction blowers are available
- Rugged die cast aluminum construction

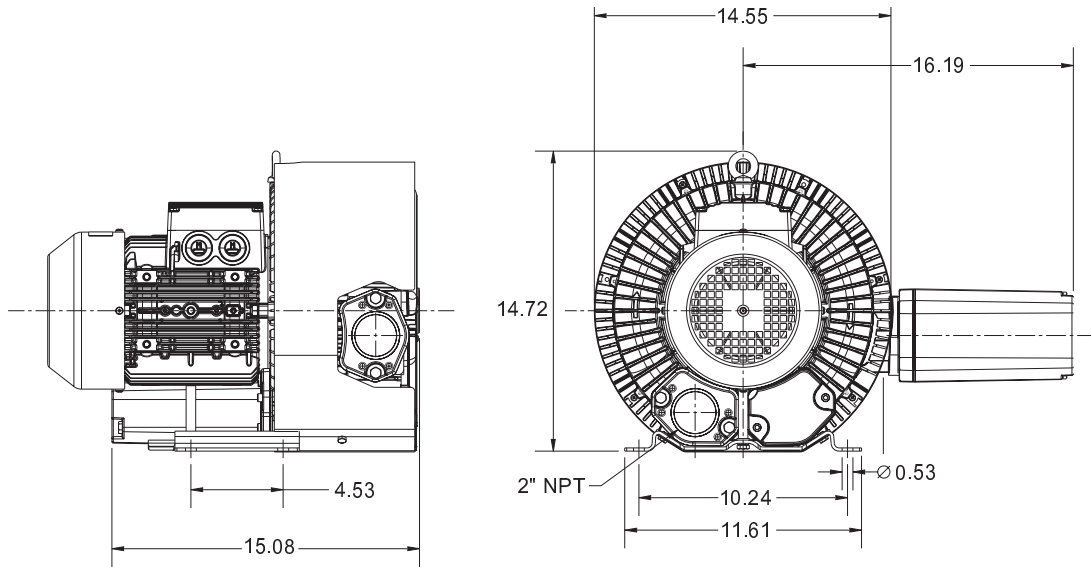
Performance curve for Vacuum pump



Performance curve for Compressor



### Dimensions: (inches)



### Recommended Accessories:

#### Relief valve:

VC61Z (Vacuum)  
PC61Z (Pressure)

#### Filter:

ATF-200-15124/1  
(Vacuum)  
AFS-30-200-10  
(Pressure)

Specifications subject to change without notice. Please contact factory for specification updates.

### Selection & Ordering Data - Type 3BA1510

Curve No.	Order No.	Fre- quency Hz	Rated power HP	Input voltage		Input current		Permissible total differential pressure		Sound pressure level dB(A)	Weight lbs
				V		A		Vacuum inch H2O	Compressor inch H2O		
<b>3~ 50/60 Hz IP55 insulation material class F</b>											
A 200	3BA1510-7AT46	50	4.02	200D ... 240D	345Y ... 415Y	12.5D	7.2Y	-136	165	72	86
A 201	3BA1510-7AT46	60	4.62	220D ... 250D	415Y ... 460Y	12.0D	6.5Y	-153	145	74	86
A 202	3BA1510-7AT56	50	5.36	200D ... 240D	345Y ... 415Y	17.4D	10.0Y	-157	197	72	95
A 203	3BA1510-7AT56	60	6.16	220D ... 250D	415Y ... 460Y	15.2D	8.5Y	-165	193	74	95

Suitable for 208 Volt Operation

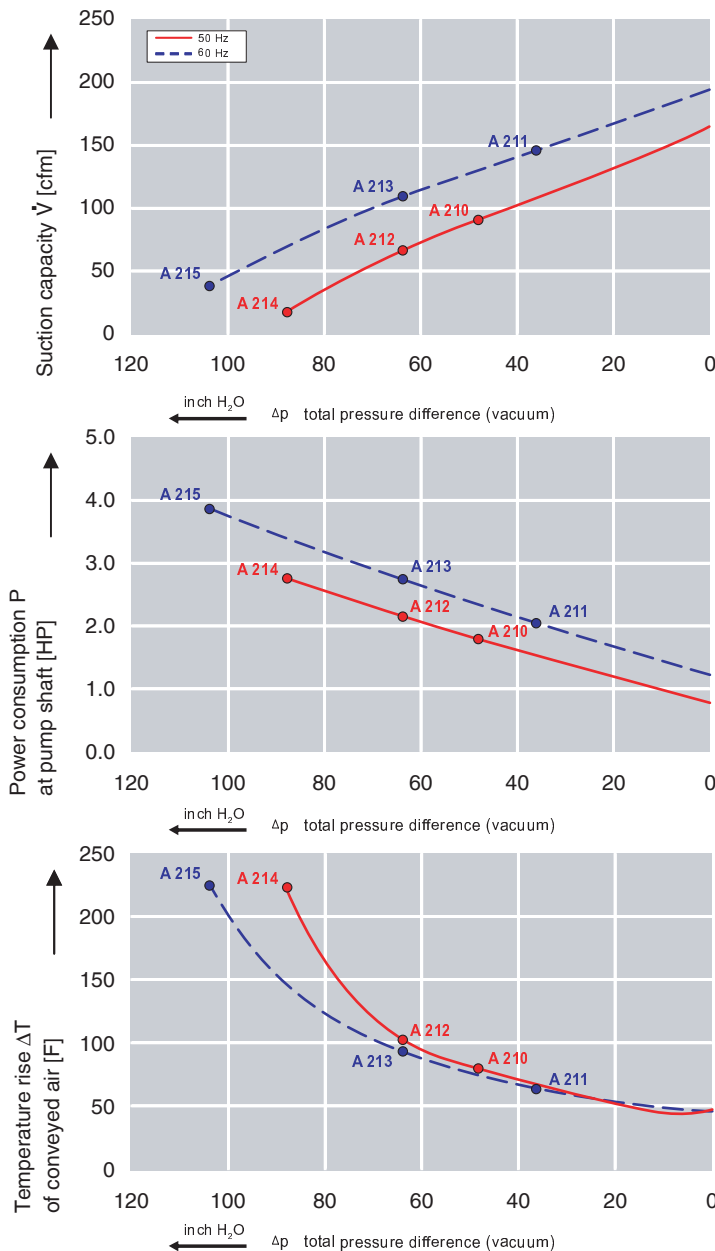
All curves are rated at 14.7 psia and 68°F ambient conditions and are reported in SCFM referenced to 68°F and 14.696 psia sea level conditions. Curve values are nominal, actual performance may vary by up to 10% of the values indicated. For inlet temperatures above approximately 80 °F or for handling gases other than air, please contact your Airtech sales representative for assistance.



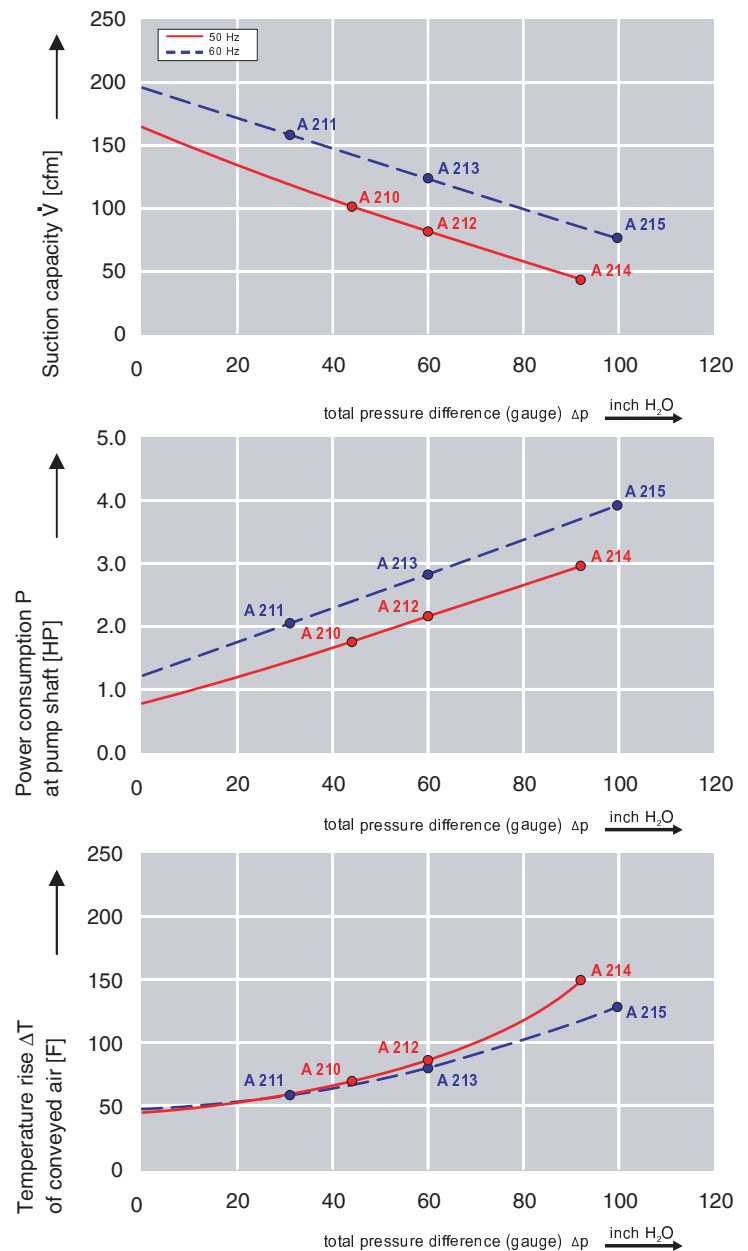
### Features:

- Cooler running, outboard bearing provides maintenance-free operation
- Environmentally friendly oil-free technology
- Extremely quiet operation
- All motors are standard TEFC with Class F insulation, UL recognized, CE Compliant  
*Explosion-Proof motors available*
- Custom construction blowers are available
- Rugged die cast aluminum construction

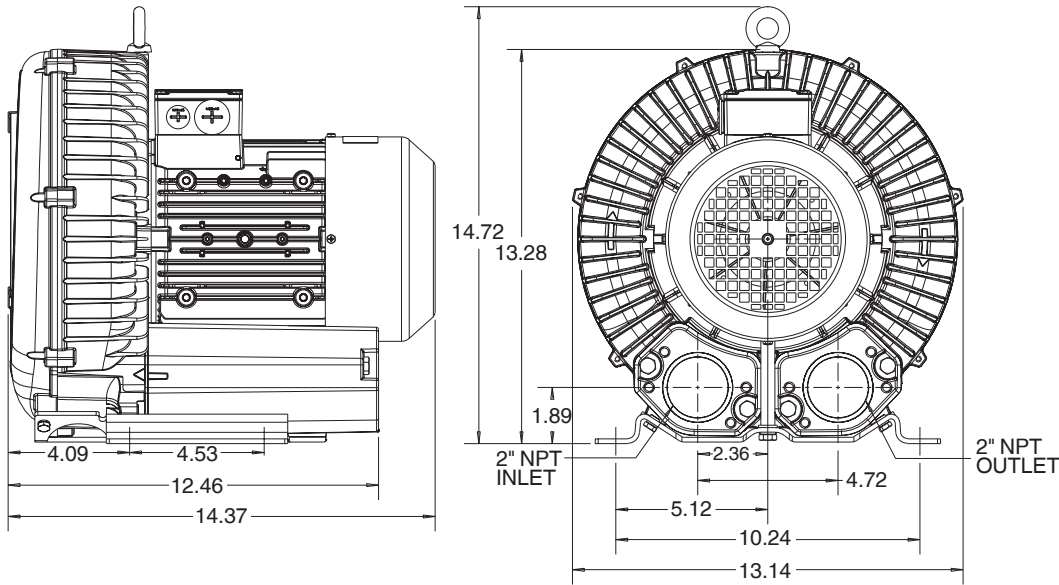
Performance curve for Vacuum pump



Performance curve for Compressor



### Dimensions: (inches)



### Recommended Accessories:

#### Relief valve:

VC61Z (Vacuum)  
PC61Z (Pressure)

#### Filter:

ATF-200-15124/1  
(Vacuum)  
AFS-30-200-10  
(Pressure)

Specifications subject to change without notice. Please contact factory for specification updates.

### Selection & Ordering Data - Type 3BA1530

Curve No.	Order No.	Fre- quency Hz	Rated power HP	Input voltage		Input current		Permissible total differential pressure		Sound pressure level dB(A)	Weight lbs
				V		A		Vacuum inch H2O	Compressor inch H2O		
<b>3~ 50/60 Hz IP55 insulation material class F</b>											
A 210	3BA1530-7AT16	50	1.74	200D ... 240D	345Y ... 415Y	5.7D	3.3Y	- 48	44	65	46
A 211	3BA1530-7AT16	60	2.01	220D ... 250D	415Y ... 460Y	5.7D	3.3Y	- 36	32	71	46
A 212	3BA1530-7AT26	50	2.15	200D ... 240D	345Y ... 415Y	7.5D	4.3Y	- 64	60	65	49
A 213	3BA1530-7AT26	60	2.75	220D ... 250D	415Y ... 460Y	7.6D	4.4Y	- 64	60	71	49
A 214	3BA1530-7AT36	50	2.95	200D ... 240D	345Y ... 415Y	9.7D	5.6Y	- 88	92	65	57
A 215	3BA1530-7AT36	60	3.42	220D ... 250D	415Y ... 460Y	10.3D	6.0Y	-104	100	71	57

Suitable for 208 Volt Operation

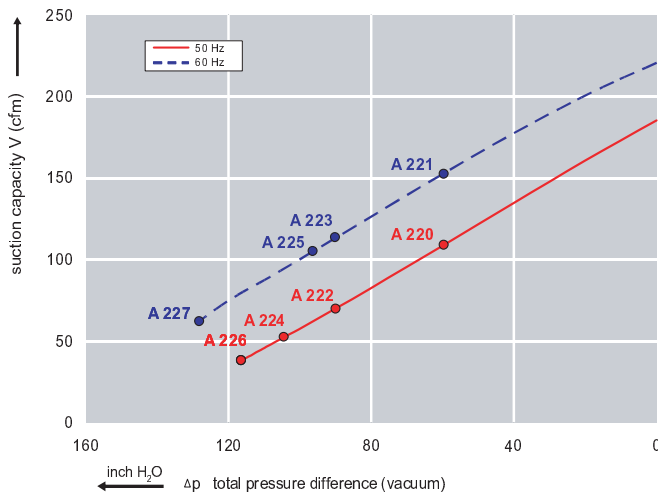
All curves are rated at 14.7 psia and 68° F ambient conditions and are reported in SCFM referenced to 68° F and 14.696 psia sea level conditions. Curve values are nominal, actual performance may vary by up to 10% of the values indicated. For inlet temperatures above approximately 80 °F or for handling gases other than air, please contact your Airtech sales representative for assistance.



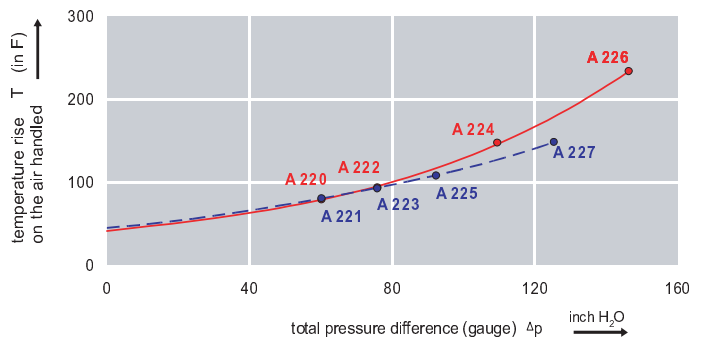
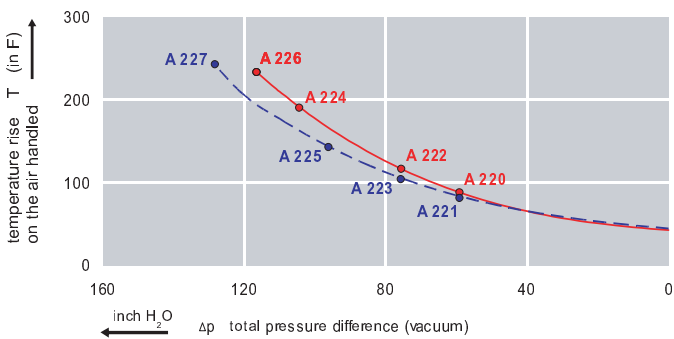
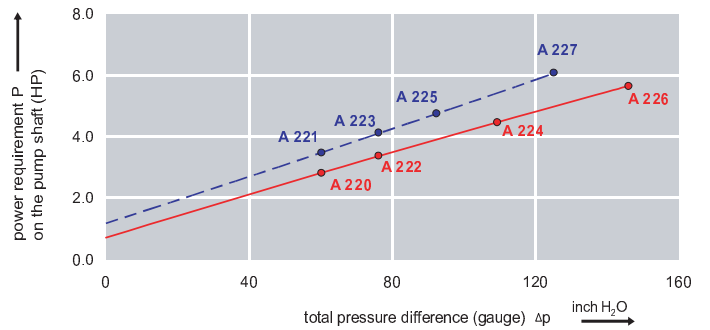
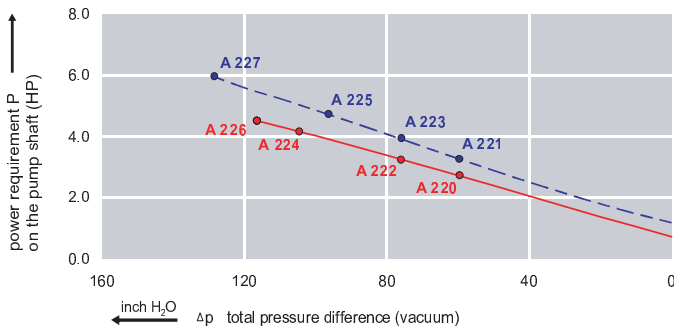
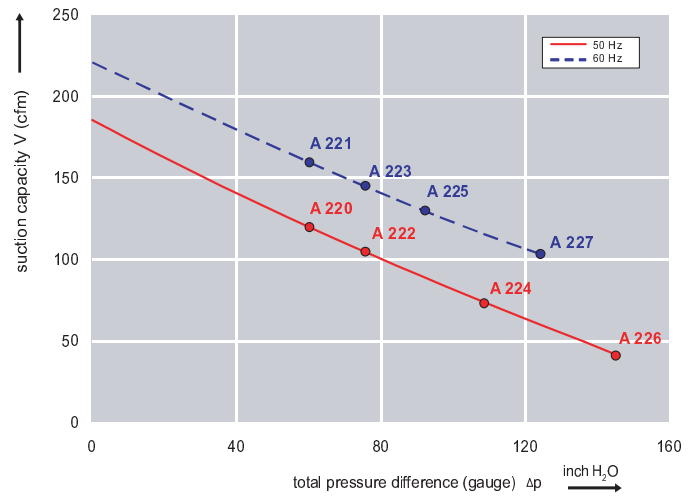
### Features:

- Cooler running, outboard bearing provides maintenance-free operation
- Environmentally friendly oil-free technology
- Extremely quiet operation
- All motors are standard TEFC with Class F insulation, UL recognized, CE Compliant  
*Explosion-Proof motors available*
- Custom construction blowers are available
- Rugged die cast aluminum construction

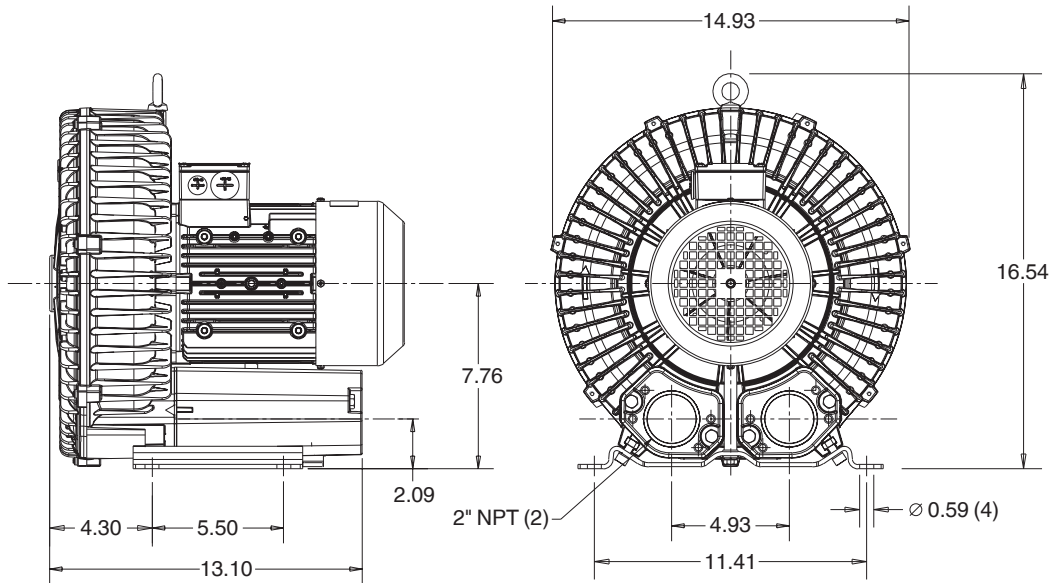
Performance curve for Vacuum pump



Performance curve for Compressor



### Dimensions: (inches)



### Recommended Accessories:

#### Relief valve:

VC61Z (Vacuum)  
PC61Z (Pressure)

#### Filter:

ATF-200-15124/1  
(Vacuum)  
AFS-30-200-10  
(Pressure)

Specifications subject to change without notice. Please contact factory for specification updates.

### Selection & Ordering Data - Type 3BA1600

Curve No.	Order No.	Fre- quency Hz	Rated power HP	Input voltage		Input current		Permissible total differential pressure		Sound pressure level dB(A)	Weight lbs
				V		A		Vacuum inch H2O	Compressor inch H2O		
<b>3~ 50/60 Hz IP55 insulation material class F</b>											
A 220	3BA1600-7AT06	50	2.15	200D ... 240D	345Y ... 415Y	8.5D	4.9Y	-64	60	69	57
A 221	3BA1600-7AT06	60	2.7	220D ... 250D	415Y ... 460Y	7.5D	4.4Y	-64	60	72	57
A 222	3BA1600-7AT16	50	2.95	200D ... 240D	345Y ... 415Y	9.7D	5.6Y	-85	70	70	64
A 223	3BA1600-7AT16	60	3.42	220D ... 250D	415Y ... 460Y	10.3D	6.0Y	-85	76	73	64
A 224	3BA1600-7AT26	50	4.02	200D ... 240D	345Y ... 415Y	12.5D	7.2Y	-104	108	70	75
A 225	3BA1600-7AT26	60	4.62	220D ... 250D	415Y ... 460Y	12.6D	7.3Y	-96	92	73	75
A 225	3BA1600-7AT25	60	4.60		575		5.8Y	-96	92	73	75
A 226	3BA1600-7AT36	50	5.36	200D ... 240D	345Y ... 415Y	17.3D	10.0Y	-116	145	70	93
A 227	3BA1600-7AT36	60	6.16	220D ... 250D	415Y ... 460Y	18.0D	10.4Y	-128	124	73	93

Suitable for 208 Volt Operation

All curves are rated at 14.7 psia and 68°F ambient conditions and are reported in SCFM referenced to 68° F and 14.696 psia sea level conditions. Curve values are nominal, actual performance may vary by up to 10% of the values indicated. For inlet temperatures above approximately 80° F or for handling gases other than air, please contact your Airtech sales representative for assistance. Fixed voltage motor tolerances are +/-10% and voltage range motors are +/-5%. Single phase motors are +/-5% tolerance.

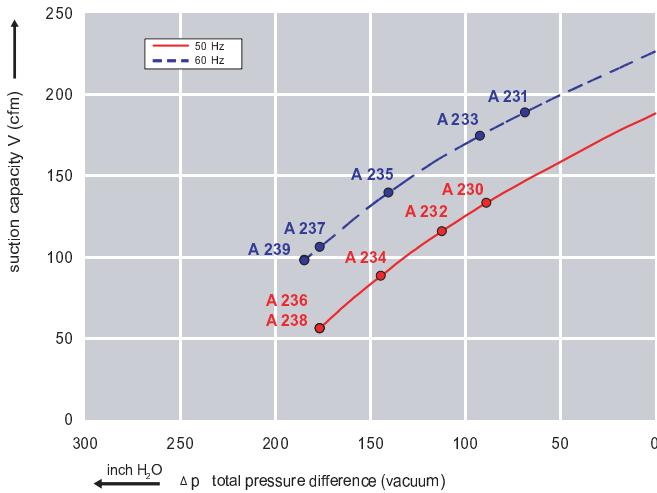


### Features:

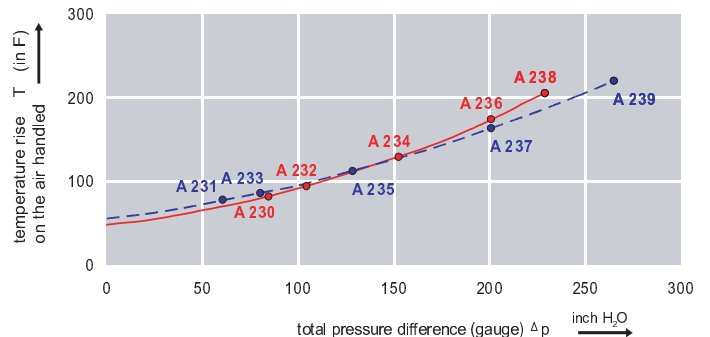
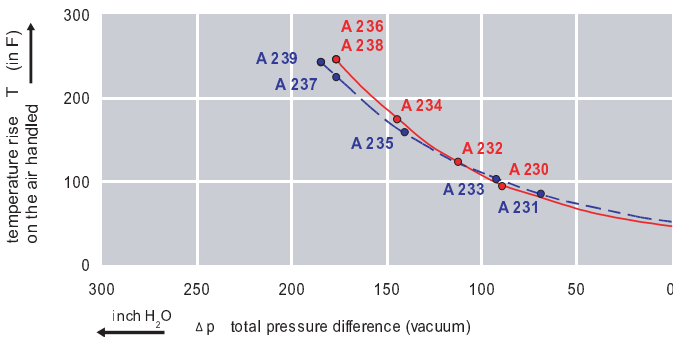
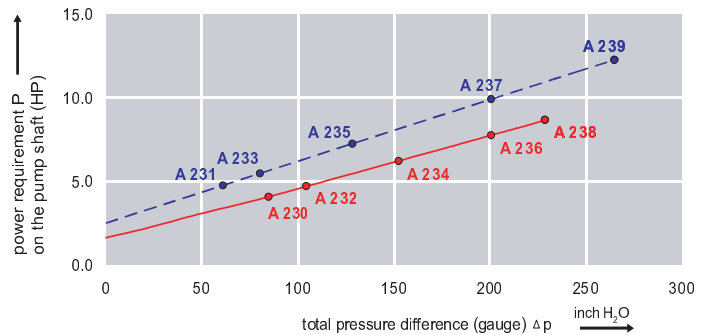
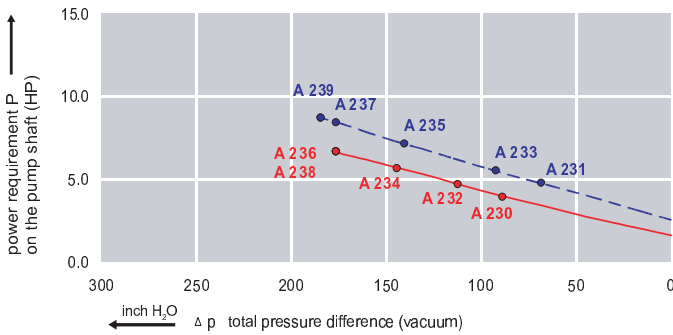
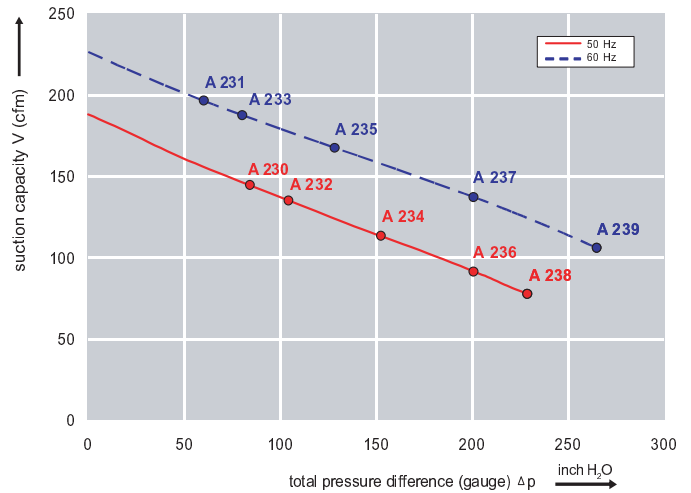


- Cooler running, outboard bearing provides maintenance-free operation
- Environmentally friendly oil-free technology
- Extremely quiet operation
- All motors are standard TEFC with Class F insulation, UL recognized, CE Compliant  
*Explosion-Proof motors available*
- Custom construction blowers are available
- Rugged die cast aluminum construction

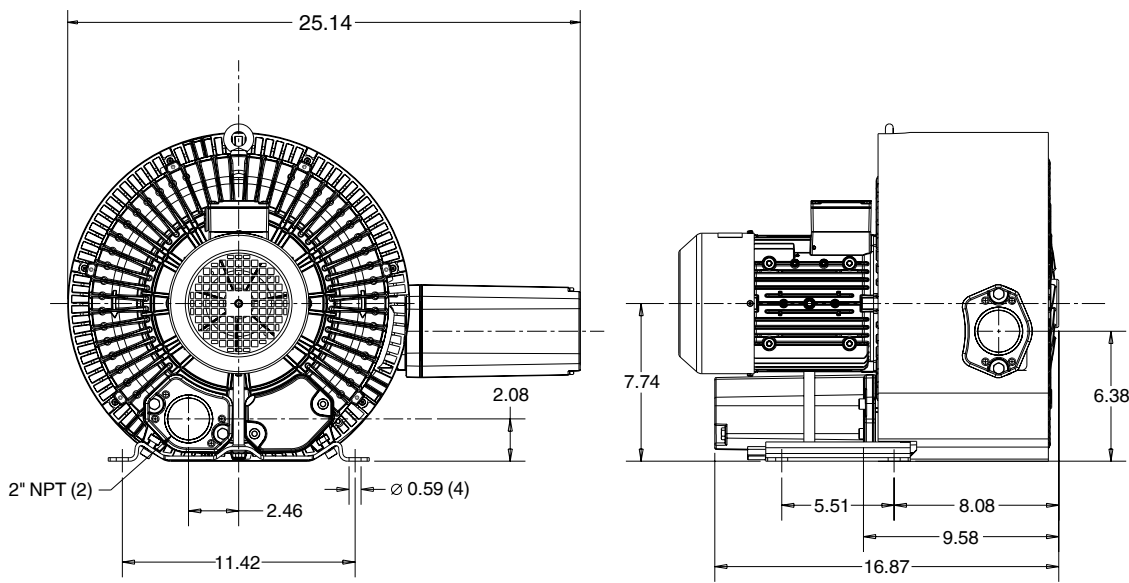
Performance curve for Vacuum pump



Performance curve for Compressor



### Dimensions: (inches)



### Recommended Accessories:

#### Relief valve:

VC61Z (Vacuum)  
PC61Z (Pressure)

#### Filter:

ATF-200-15124/1  
(Vacuum)  
AFS-30-200-10  
(Pressure)

Specifications subject to change without notice. Please contact factory for specification updates.

### Selection & Ordering Data - Type 3BA1610

Curve No.	Order No.	Fre- quency Hz	Rated power HP	Input voltage		Input current A	Permissible total differential pressure		Sound pressure level dB(A)	Weight lbs	
				V			Vacuum inch H2O	Compressor inch H2O			
<b>3~ 50/60 Hz IP55 insulation material class F</b>											
A 230	3BA1610-7AT16	50	2.95	200D ... 240D	345Y ... 415Y	9.7D	5.6Y	-88	84	73	93
A 231	3BA1610-7AT16	60	3.42	220D ... 250D	415Y ... 460Y	9.0D	5.3Y	-68	60	76	93
A 232	3BA1610-7AT26	50	4.02	200D ... 240D	345Y ... 415Y	12.5D	7.2Y	-112	104	73	104
A 233	3BA1610-7AT26	60	4.62	220D ... 250D	415Y ... 460Y	12.0D	6.5Y	-92	80	76	104
A 234	3BA1610-7AT36	50	5.36	200D ... 240D	345Y ... 415Y	13.0D	7.5Y	-145	153	73	117
A 235	3BA1610-7AT36	60	6.43	220D ... 250D	415Y ... 460Y	16.5D	9.8Y	-141	128	76	117
A 236	3BA1610-7AT46	50	7.37	200D ... 240D	345Y ... 415Y	23.0D	13.3Y	-177	201	73	154
A 237	3BA1610-7AT46	60	8.44	220D ... 250D	415Y ... 460Y	20.0D	11.2Y	-177	201	76	154
A 238	3BA1610-7AT56	50	10.05	200D ... 240D	345Y ... 415Y	29.0D	16.7Y	-177	229	73	170
A 239	3BA1610-7AT56	60	11.52	220D ... 250D	415Y ... 460Y	27.5D	15.0Y	-185	265	76	170

Suitable for 208 Volt Operation

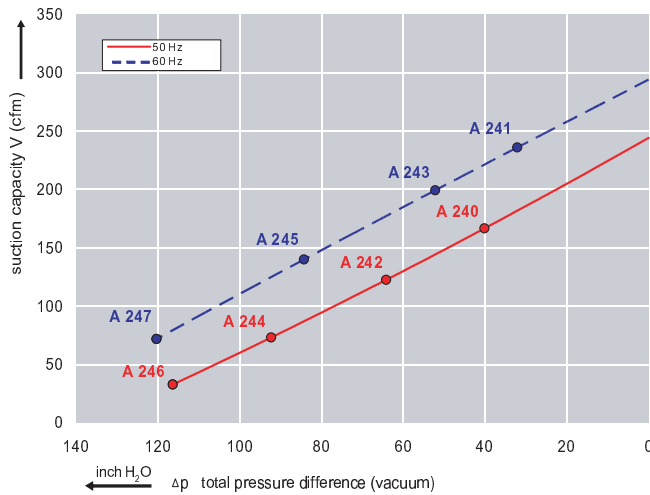
All curves are rated at 14.7 psia and 68°F ambient conditions and are reported in SCFM referenced to 68°F and 14.696 psia sea level conditions. Curve values are nominal, actual performance may vary by up to 10% of the values indicated. For inlet temperatures above approximately 80 °F or for handling gases other than air, please contact your Airtech sales representative for assistance.

### Features:

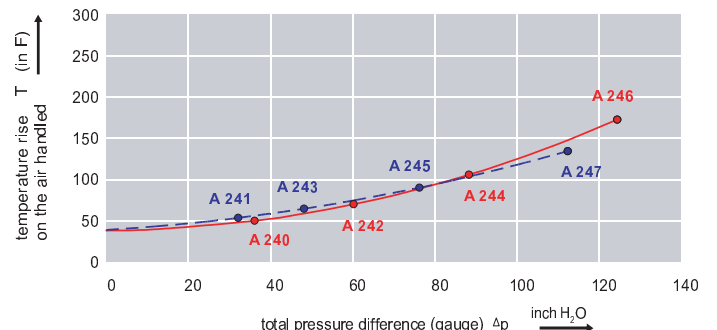
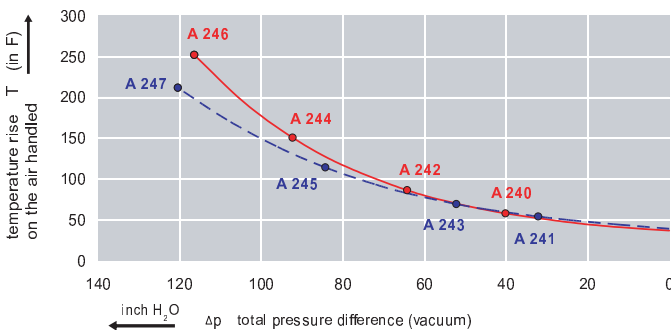
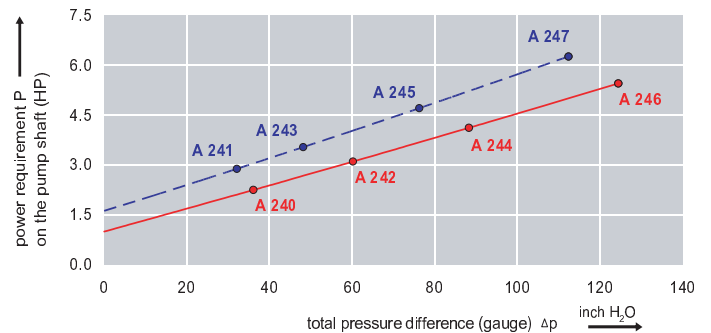
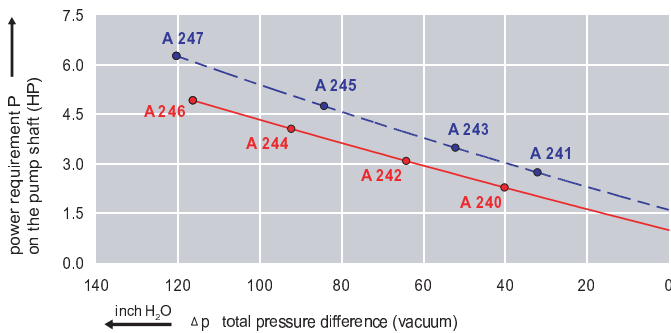
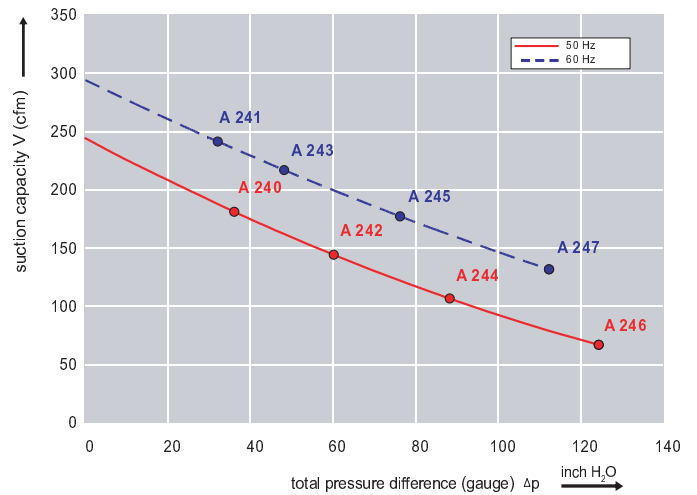


- Cooler running, outboard bearing provides maintenance-free operation
- Environmentally friendly oil-free technology
- Extremely quiet operation
- All motors are standard TEFC with Class F insulation, UL recognized, CE Compliant  
*Explosion-Proof motors available*
- Custom construction blowers are available
- Rugged die cast aluminum construction

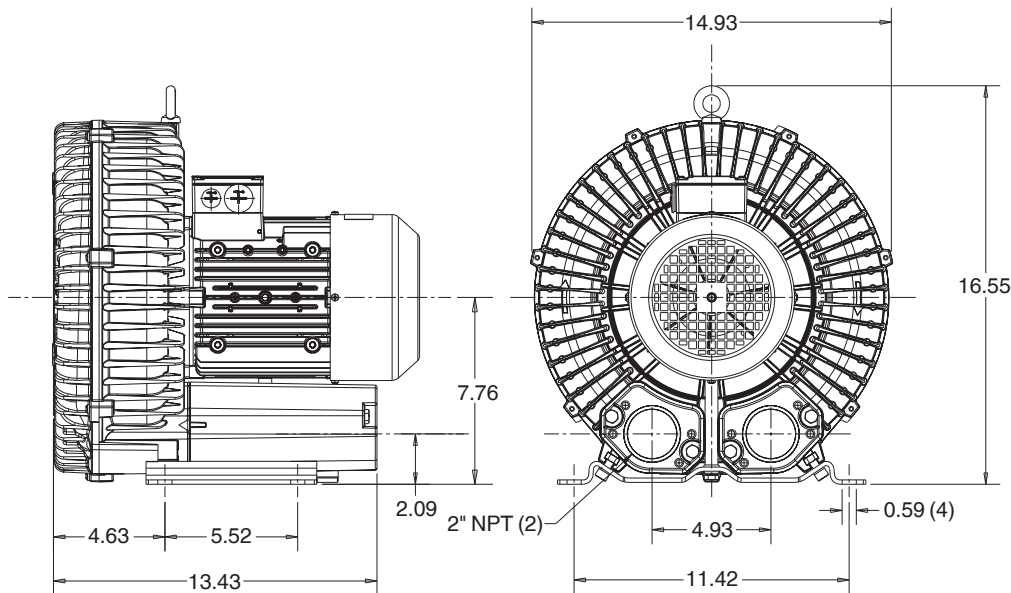
Performance curve for Vacuum pump



Performance curve for Compressor



### Dimensions: (inches)



### Recommended Accessories:

#### Relief valve:

VC61Z (Vacuum)  
PC61Z (Pressure)

#### Filter:

ATF-200-15124/1  
(Vacuum)  
AFS-30-200-10  
(Pressure)

Specifications subject to change without notice. Please contact factory for specification updates.

### Selection & Ordering Data - Type 3BA1630

Curve No.	Order No.	Fre- quency Hz	Rated power HP	Input voltage		Input current		Permissible total differential pressure		Sound pressure level dB(A)	Weight lbs
				V		A		Vacuum inch H2O	Compressor inch H2O		
<b>3~ 50/60 Hz IP55 insulation material class F</b>											
A 240	3BA1630-7AT06	50	2.14	200D ... 240D	345Y ... 415Y	8.5D	4.9Y	-40	36	70	59
A 241	3BA1630-7AT06	60	2.75	220D ... 250D	415Y ... 460Y	7.5D	4.4Y	-32	32	73	59
A 242	3BA1630-7AT16	50	2.95	200D ... 240D	345Y ... 415Y	9.7D	5.6Y	-64	60	70	66
A 243	3BA1630-7AT16	60	3.42	220D ... 250D	415Y ... 460Y	9.0D	5.3Y	-52	48	73	66
A 244	3BA1630-7AT26	50	4.02	200D ... 240D	345Y ... 415Y	12.5D	7.2Y	-92	88	70	77
A 245	3BA1630-7AT26	60	4.62	220D ... 250D	415Y ... 460Y	12.6D	7.3Y	-84	76	73	77
A 245	3BA1630-7AT25	60	4.60		575		5.8Y	-84	76	73	77
A 246	3BA1630-7AT36	50	5.36	200D ... 240D	345Y ... 415Y	15.6D	9.0Y	-116	124	70	95
A 247	3BA1630-7AT36	60	6.17	220D ... 250D	415Y ... 460Y	16.5D	9.8Y	-120	112	73	95

Suitable for 208 Volt Operation

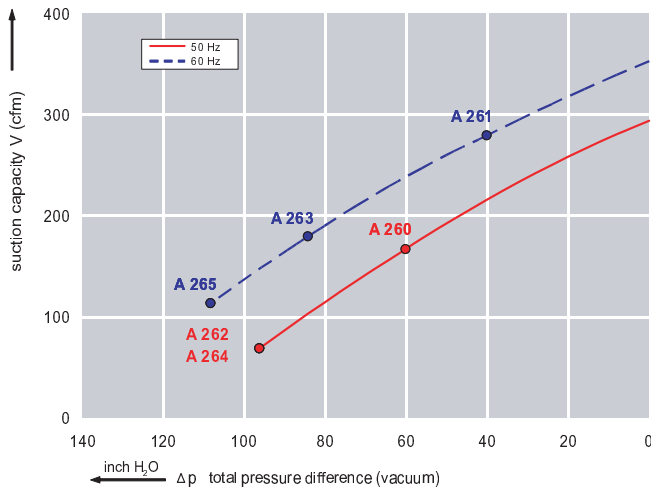
All curves are rated at 14.7 psia and 68°F ambient conditions and are reported in SCFM referenced to 68°F and 14.696 psia sea level conditions. Curve values are nominal, actual performance may vary by up to 10% of the values indicated. For inlet temperatures above approximately 80 °F or for handling gases other than air, please contact your Airtech sales representative for assistance.

### Features:

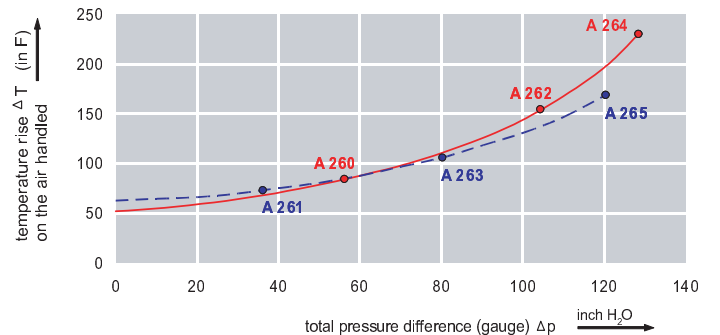
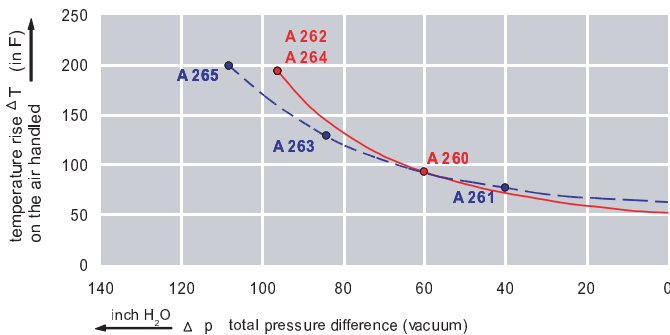
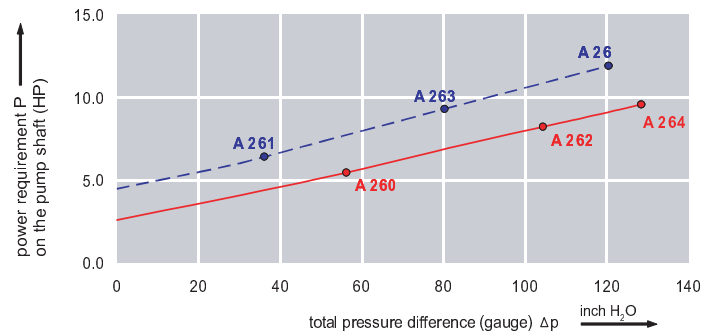
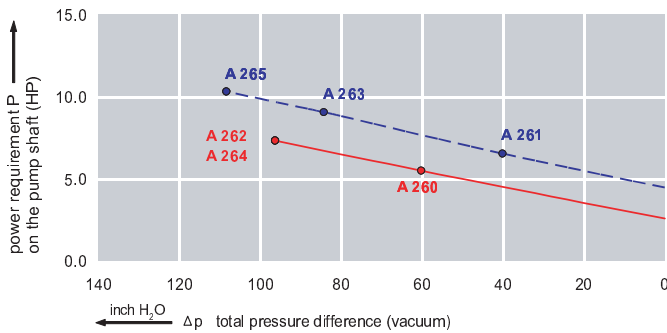
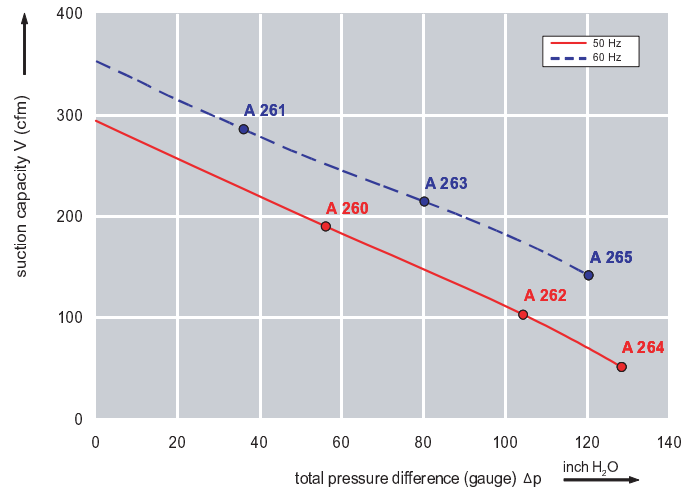


- Cooler running, outboard bearing provides maintenance-free operation
- Environmentally friendly oil-free technology
- Extremely quiet operation
- All motors are standard TEFC with Class F insulation, UL recognized, CE Compliant  
*Explosion-Proof motors available*
- Custom construction blowers are available
- Rugged die cast aluminum construction

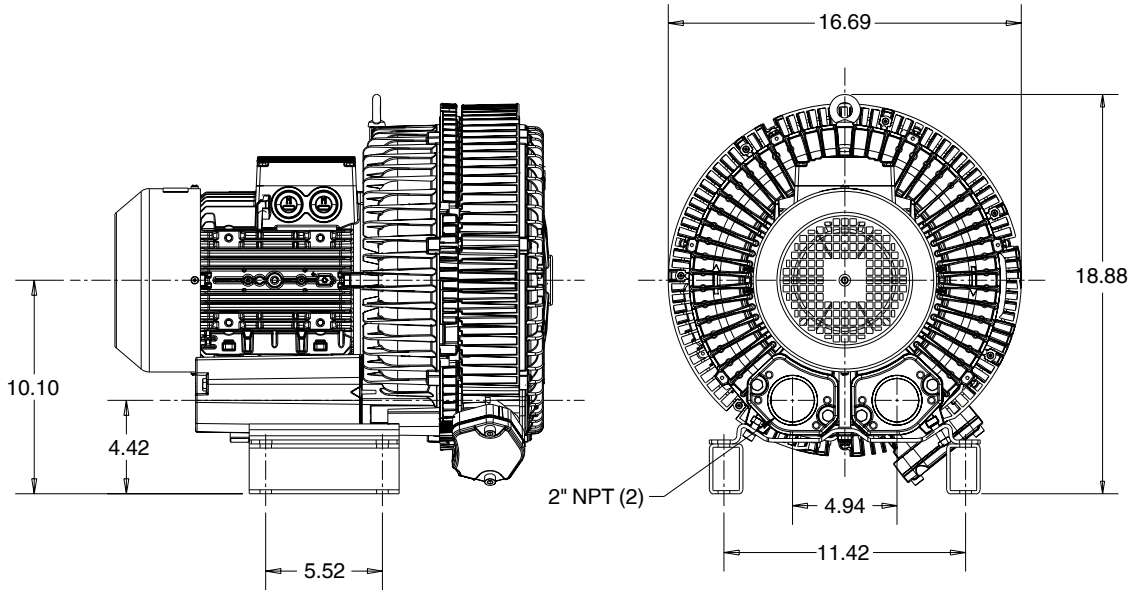
Performance curve for Vacuum pump



Performance curve for Compressor



### Dimensions: (inches)



### Recommended Accessories:

#### Relief valve:

VC61Z (Vacuum)  
PC61Z (Pressure)

#### Filter:

ATF-200-15124/1  
(Vacuum)  
AFS-30-200-10  
(Pressure)

Specifications subject to change without notice. Please contact factory for specification updates.

### Selection & Ordering Data - Type 3BA1640

Curve No.	Order No.	Fre- quency Hz	Rated power HP	Input voltage		Input current		Permissible total differential pressure		Sound pressure level dB(A)	Weight lbs
				V		A		Vacuum inch H2O	Compressor inch H2O		
<b>3~ 50/60 Hz IP55 insulation material class F</b>											
A 260	3BA1640-7AT36	50	5.36	200D ... 240D	345Y ... 415Y	13.0D	7.5Y	-60	56	74	117
A 261	3BA1640-7AT36	60	6.16	220D ... 250D	415Y ... 460Y	15.2D	8.5Y	-40	36	78	117
A 262	3BA1640-7AT46	50	7.37	200D ... 240D	345Y ... 415Y	23.0D	13.3Y	-96	104	74	161
A 263	3BA1640-7AT46	60	8.44	220D ... 250D	415Y ... 460Y	20.0D	11.2Y	-84	80	78	161
A 264	3BA1640-7AT56	50	10.05	200D ... 240D	345Y ... 415Y	29.0D	16.7Y	-96	128	74	189
A 265	3BA1640-7AT56	60	11.52	220D ... 250D	415Y ... 460Y	27.5D	15.0Y	-108	120	78	189

Suitable for 208 Volt Operation

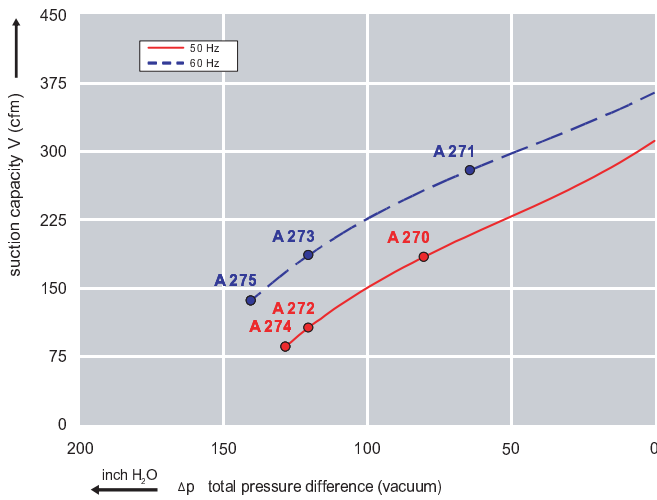
All curves are rated at 14.7 psia and 68°F ambient conditions and are reported in SCFM referenced to 68°F and 14.696 psia sea level conditions. Curve values are nominal, actual performance may vary by up to 10% of the values indicated. For inlet temperatures above approximately 80 °F or for handling gases other than air, please contact your Airtech sales representative for assistance.



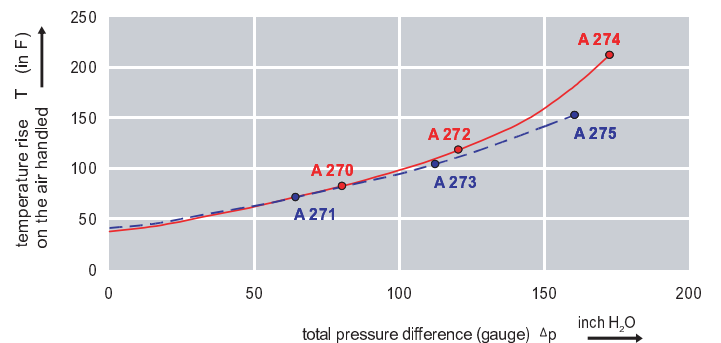
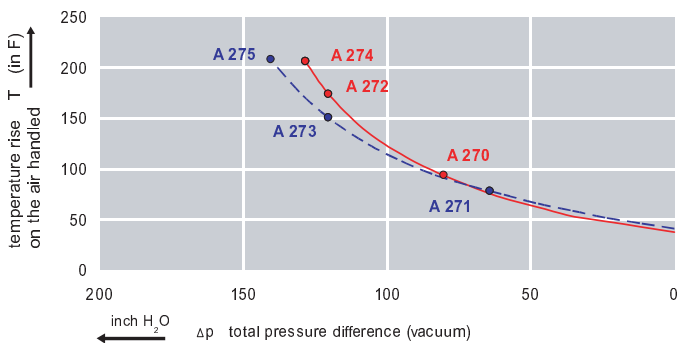
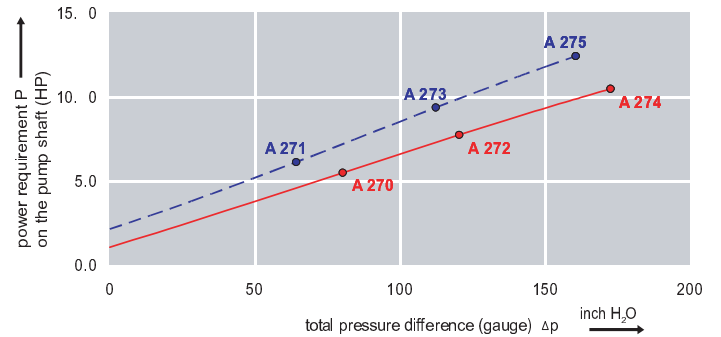
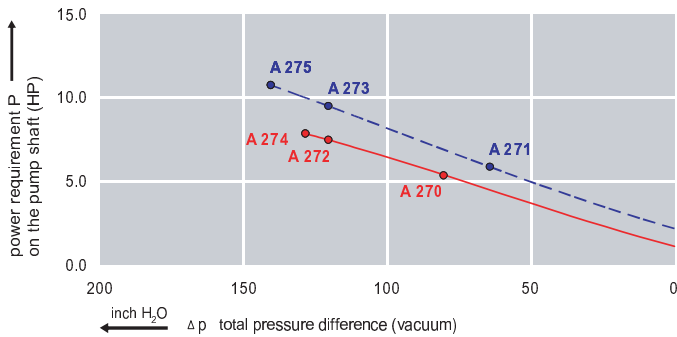
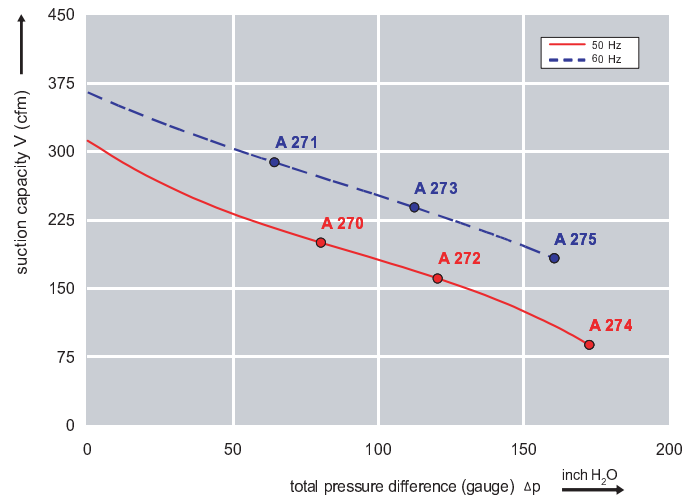
### Features:

- Cooler running, outboard bearing provides maintenance-free operation
- Environmentally friendly oil-free technology
- Extremely quiet operation
- All motors are standard TEFC with Class F insulation, UL recognized, CE Compliant  
*Explosion-Proof motors available*
- Custom construction blowers are available
- Rugged die cast aluminum construction

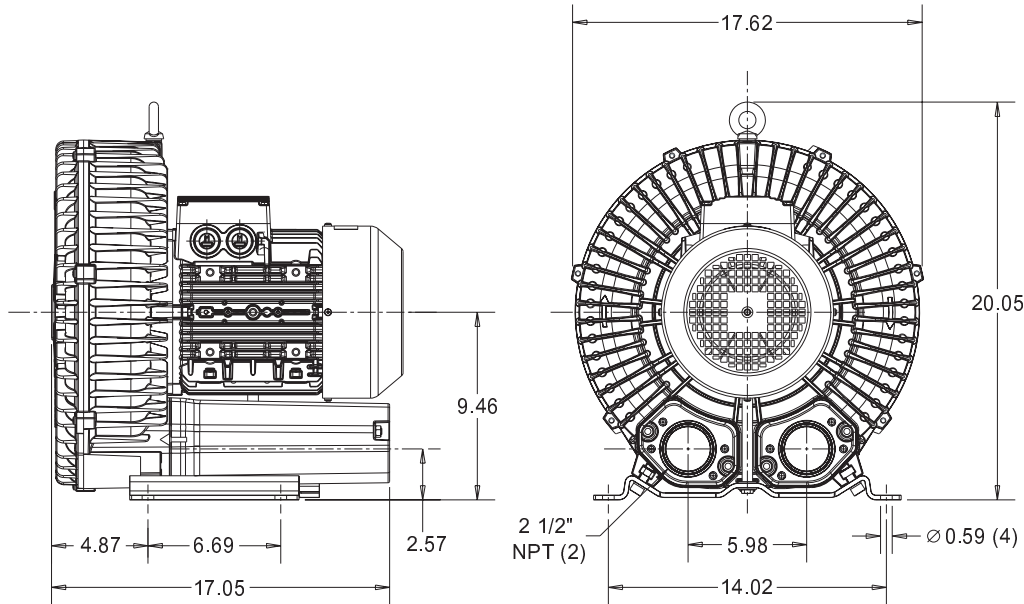
Performance curve for Vacuum pump



Performance curve for Compressor



### Dimensions: (inches)



### Recommended Accessories:

#### Relief valve:

VC81Z (Vacuum)  
PC81Z (Pressure)

#### Filter:

ATF-250-15124/1  
(Vacuum)  
AFS-230-250-10  
(Pressure)

Specifications subject to change without notice. Please contact factory for specification updates.

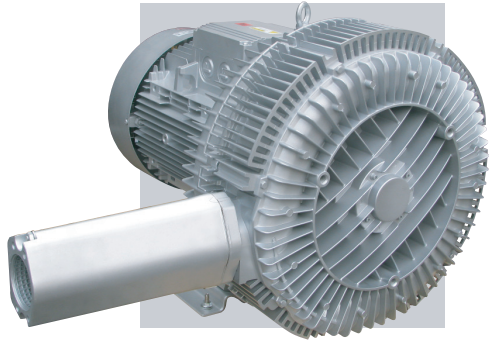
### Selection & Ordering Data - Type 3BA1800

Curve No.	Order No.	Fre- quency Hz	Rated power HP	Input Voltage		Input Current		Permissible total differential pressure		Sound pressure level	lbs
				V		A		Vacuum inch H2O	Compressor inch H2O		
<b>3~ 50/60 Hz IP55 insulation material class F</b>											
A 270	3BA1800-7AT06	50	5.36	200D ... 240D	345Y ... 415Y	15.6D	9.0Y	-80	80	70	128
A 271	3BA1800-7AT06	60	6.16	220D ... 250D	415Y ... 460Y	15.2D	8.5Y	-64	64	74	128
A 272	3BA1800-7AT16	50	7.37	200D ... 240D	345Y ... 415Y	23.0D	13.3Y	-120	120	70	143
A 273	3BA1800-7AT16	60	8.44	220D ... 250D	415Y ... 460Y	23.0D	13.3Y	-120	112	74	143
A 274	3BA1800-7AT26	50	10.05	200D ... 240D	345Y ... 415Y	29.0D	16.7Y	-128	173	70	150
A 275	3BA1800-7AT26	60	11.52	220D ... 250D	415Y ... 460Y	27.5D	15.0Y	-141	161	74	150

Suitable for 208 Volt Operation

All curves are rated at 14.7 psia and 68°F ambient conditions and are reported in SCFM referenced to 68°F and 14.696 psia sea level conditions. Curve values are nominal, actual performance may vary by up to 10% of the values indicated. For inlet temperatures above approximately 80 °F or for handling gases other than air, please contact your Airtech sales representative for assistance.

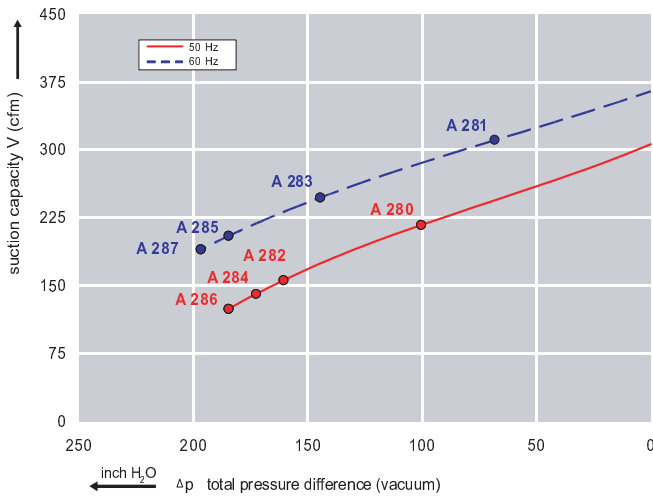




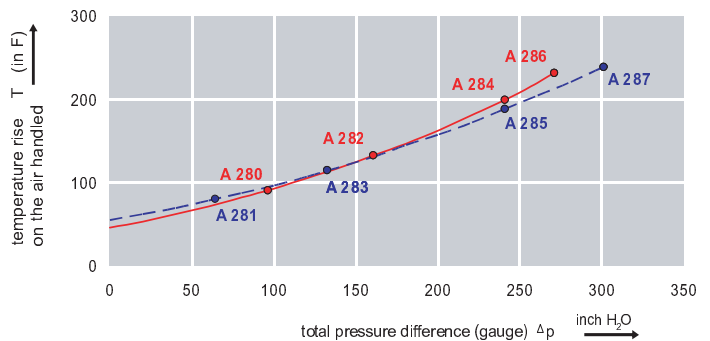
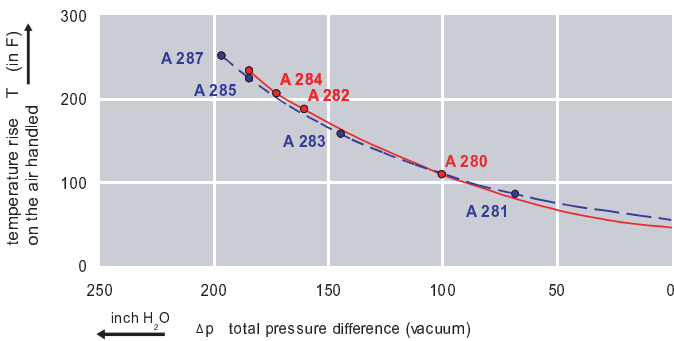
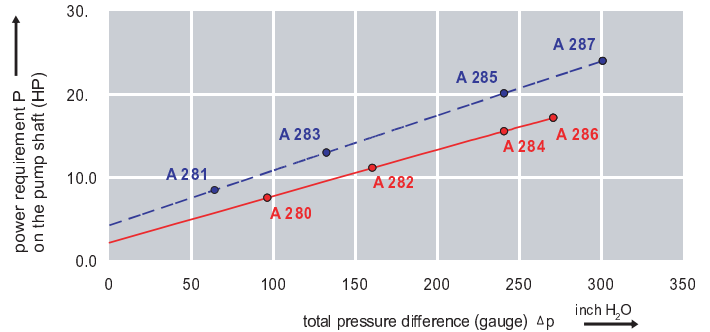
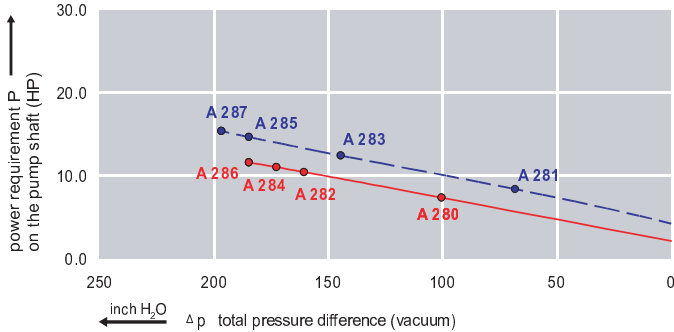
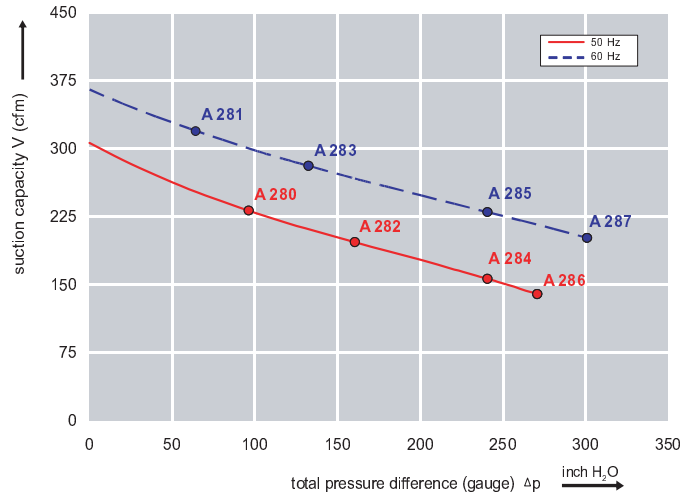
### Features:

- Cooler running, outboard bearing provides maintenance-free operation
- Environmentally friendly oil-free technology
- Extremely quiet operation
- All motors are standard TEFC with Class F insulation, UL recognized, CE Compliant  
*Explosion-Proof motors available*
- Custom construction blowers are available
- Rugged die cast aluminum construction

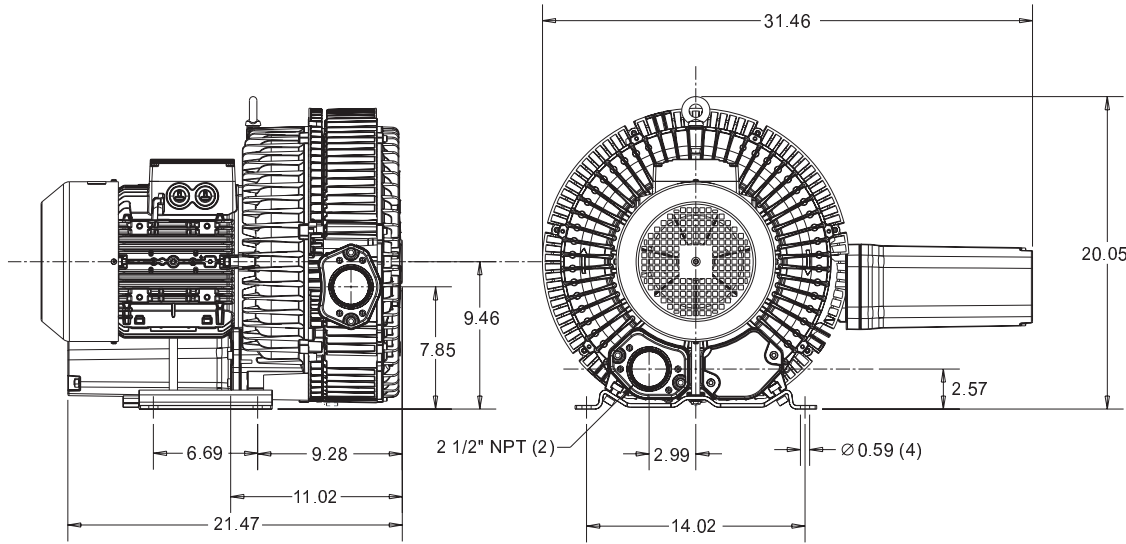
Performance curve for Vacuum pump



Performance curve for Compressor



### Dimensions: (inches)



### Recommended Accessories:

#### Relief valve:

VC81Z (Vacuum)  
PC81Z (Pressure)

#### Filter:

ATF-250-15124/1  
(Vacuum)  
AFS-230-250-10  
(Pressure)

Specifications subject to change without notice. Please contact factory for specification updates.

### Selection & Ordering Data - Type 3BA1810

Curve No.	Order No.	Fre- quency Hz	Rated power HP	Input voltage		Input current A	Permissible total differential pressure		Sound pressure level dB(A)	Weight lbs	
				V			Vacuum inch H2O	Compressor inch H2O			
<b>3~ 50/60 Hz IP55 insulation material class F1)</b>											
A 280	3BA1810-7AT16	50	7.37	200D ... 240D	345Y ... 415Y	23.0D	13.3Y	-100	96	74	250
A 281	3BA1810-7AT16	60	8.44	220D ... 250D	415Y ... 460Y	20.0D	11.2Y	-68	64	78	250
A 282	3BA1810-7AT26	50	10.05	200D ... 240D	345Y ... 415Y	29.0D	16.7Y	-161	161	74	260
A 283	3BA1810-7AT26	60	11.52	220D ... 250D	415Y ... 460Y	27.5D	15.0Y	-145	132	78	260
A 284	3BA1810-7AT36	50	14.74	200D ... 240D	345Y ... 415Y	48.5D	28.0Y	-173	241	74	316
A 285	3BA1810-7AT36	60	16.88	220D ... 250D	415Y ... 460Y	50.2D	29.0Y	-185	241	78	316
A 286	3BA1810-7AT46	50	20.11	200D ... 240D	345Y ... 415Y	56.5D	32.5Y	-185	271	74	341
A 287	3BA1810-7AT46	60	23.18	220D ... 250D	415Y ... 460Y	60.0D	34.5Y	-197	301	78	341

Suitable for 208 Volt Operation

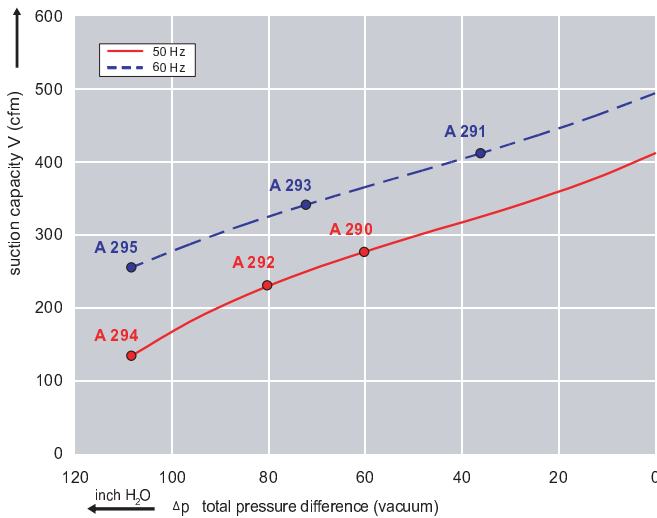
All curves are rated at 14.7 psia and 68°F ambient conditions and are reported in SCFM referenced to 68°F and 14.696 psia sea level conditions. Curve values are nominal, actual performance may vary by up to 10% of the values indicated. For inlet temperatures above approximately 80 °F or for handling gases other than air, please contact your Airtech sales representative for assistance.



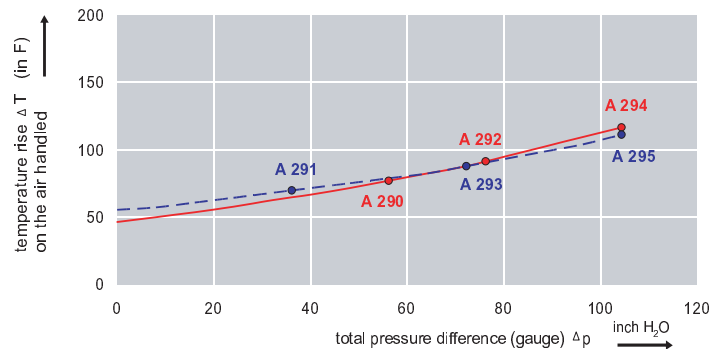
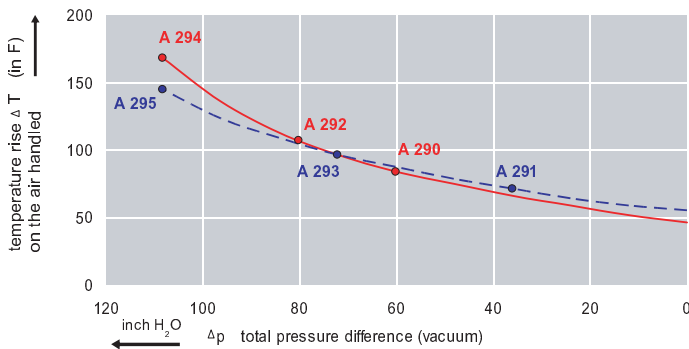
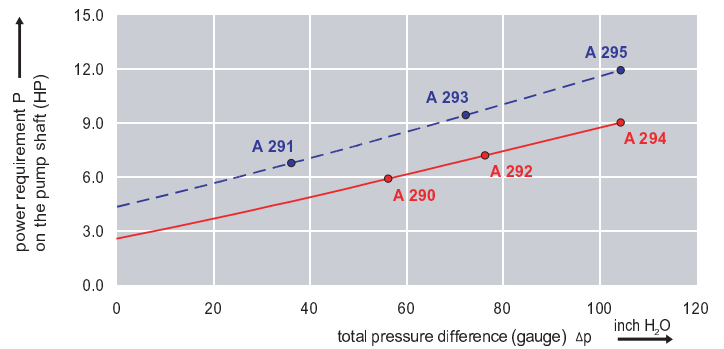
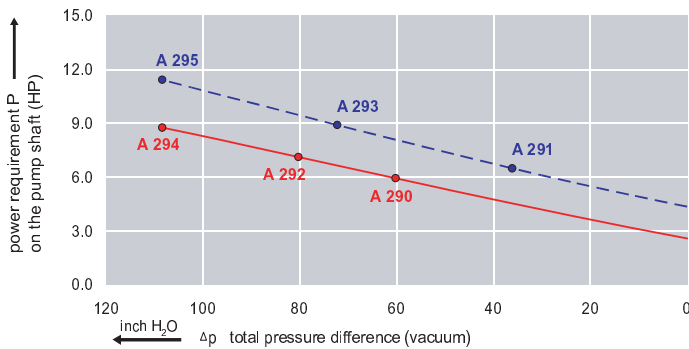
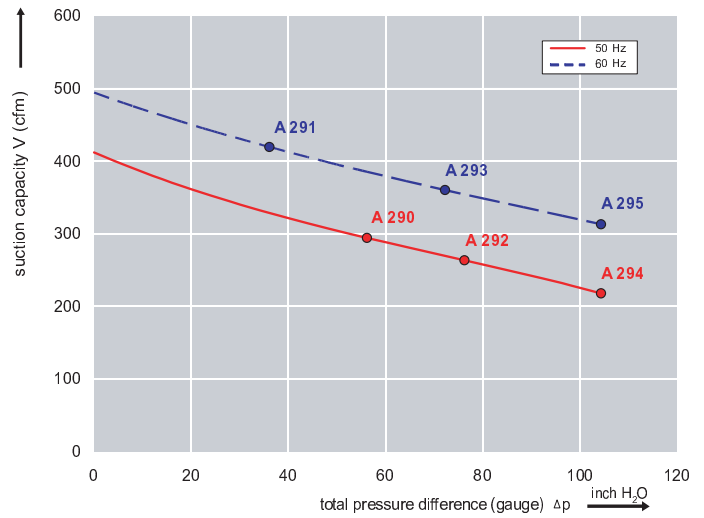
### Features:

- Cooler running, outboard bearing provides maintenance-free operation
- Environmentally friendly oil-free technology
- Extremely quiet operation
- All motors are standard TEFC with Class F insulation, UL recognized, CE Compliant  
*Explosion-Proof motors available*
- Custom construction blowers are available
- Rugged die cast aluminum construction

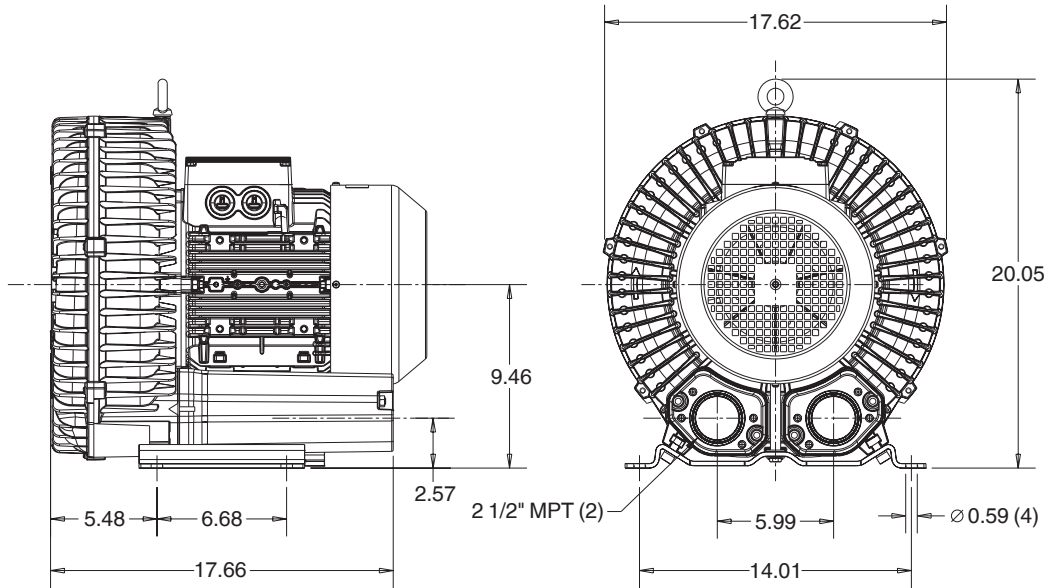
Performance curve for Vacuum pump



Performance curve for Compressor



### Dimensions: (inches)



### Recommended Accessories:

#### Relief valve:

VC91Z  
(Vacuum)

PC91Z  
(Pressure)

#### Filter:

ATF-300-21138  
(Vacuum)

AFS-230-300-10  
(Pressure)

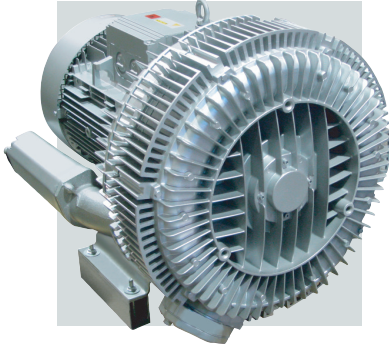
Specifications subject to change without notice. Please contact factory for specification updates.

### Selection & Ordering Data - Type 3BA1830

Curve No.	Order No.	Fre- quency  Hz	Rated power  HP	Input voltage		Input current  A	Permissible total differential pressure		Sound pressure level  dB(A)	Weight  lbs	
				V			Vacuum inch H2O	Compressor inch H2O			
<b>3~ 50/60 Hz IP55 insulation material class F</b>											
A 290	3BA1830-7AT06	50	5.36	200D ... 240D	345Y ... 415Y	15.6D	9.0Y	-60	56	70	139
A 291	3BA1830-7AT06	60	6.16	220D ... 250D	415Y ... 460Y	15.2D	8.5Y	-36	36	74	139
A 292	3BA1830-7AT16	50	7.37	200D ... 240D	345Y ... 415Y	23.0D	13.3Y	-80	76	70	154
A 293	3BA1830-7AT16	60	8.44	220D ... 250D	415Y ... 460Y	23.0D	13.3Y	-72	72	74	154
A 294	3BA1830-7AT26	50	10.05	200D ... 240D	345Y ... 415Y	29.0D	16.7Y	-108	104	70	160
A 295	3BA1830-7AT26	60	11.52	220D ... 250D	415Y ... 460Y	27.5D	15.0Y	-108	104	74	160
<b>3~ 50/60 Hz IP55 insulation material class F</b>											
A 290	3BA1830-7AT05	50	5.36	500D		7.5D		-60	56	70	139
A 291	3BA1830-7AT05	60	6.17	575D		7.6D		-36	36	74	139
A 292	3BA1830-7AT15	50	7.37	500D		10.5D		-80	76	70	154
A 293	3BA1830-7AT15	60	8.45	575D		10.4D		-72	72	74	154
A 294	3BA1830-7AT25	50	10.05	500D		13.0D		-108	104	70	160
A 295	3BA1830-7AT25	60	11.53	575D		13.6D		-108	104	74	160

Suitable for 208 Volt Operation

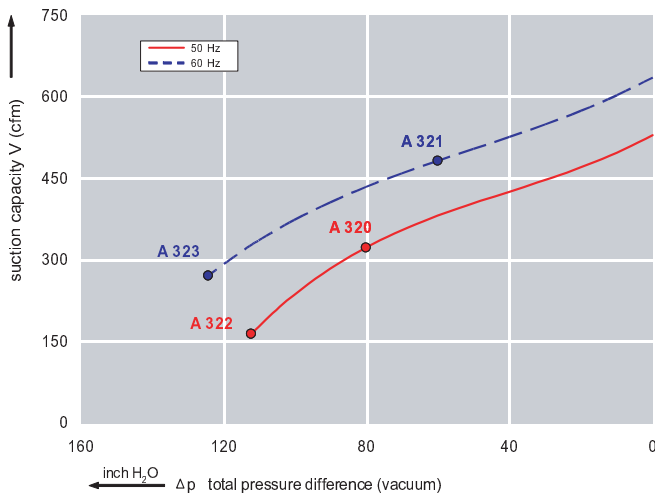
All curves are rated at 14.7 psia and 68°F ambient conditions and are reported in SCFM referenced to 68°F and 14.696 psia sea level conditions. Curve values are nominal, actual performance may vary by up to 10% of the values indicated. For inlet temperatures above approximately 80 °F or for handling gases other than air, please contact your Airtech sales representative for assistance.



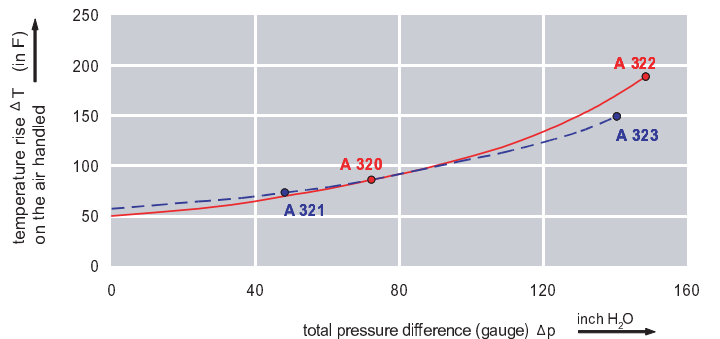
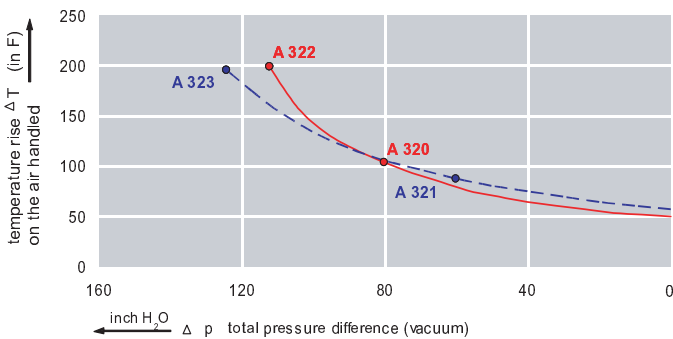
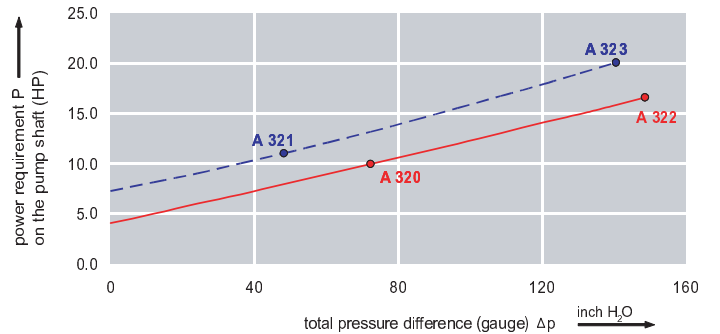
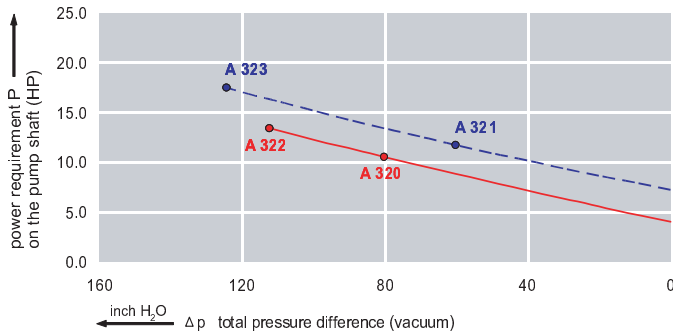
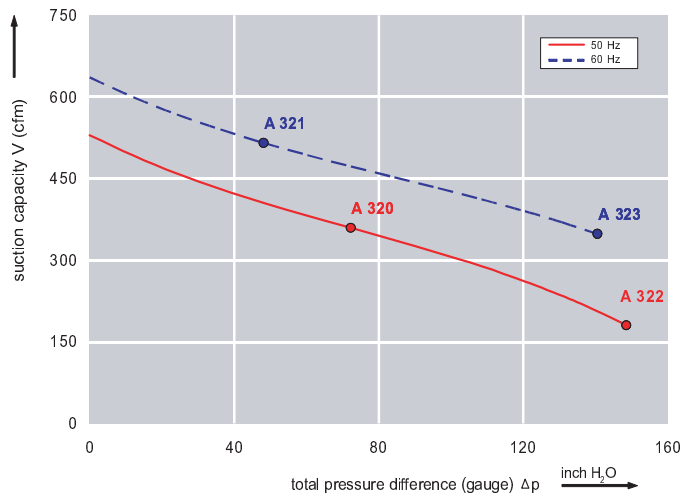
### Features:

- Cooler running, outboard bearing provides maintenance-free operation
- Environmentally friendly oil-free technology
- Extremely quiet operation
- All motors are standard TEFC with Class F insulation, UL recognized, CE Compliant  
*Explosion-Proof motors available*
- Custom construction blowers are available
- Rugged die cast aluminum construction

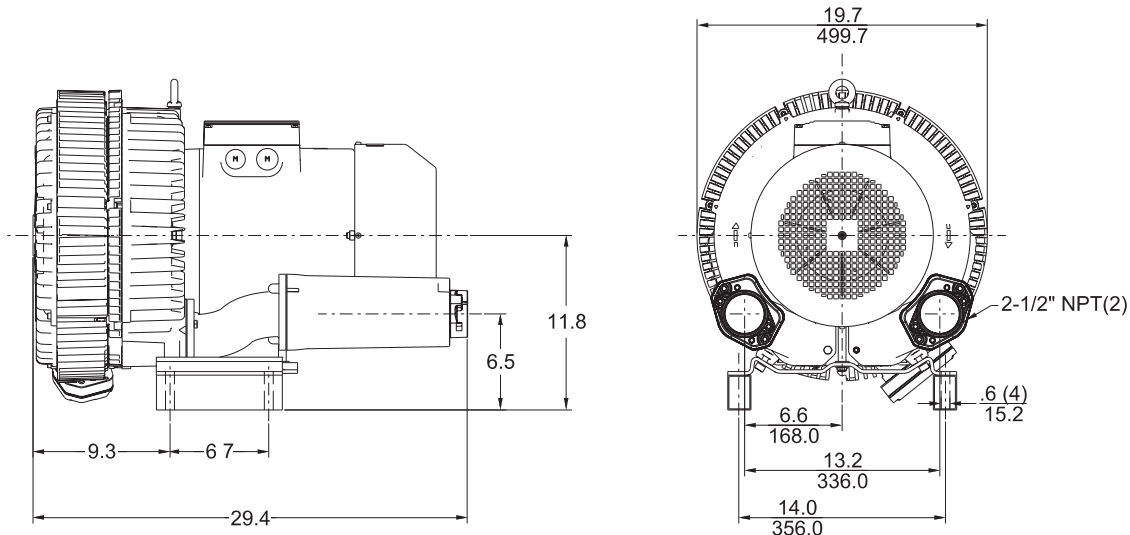
Performance curve for Vacuum pump



Performance curve for Compressor



**Dimensions: (inches)**



**Recommended  
Accessories:**

**Relief valve:**

- VC91Z (Vacuum)
- PC91Z (Pressure)

**Filter:**

- ATF-300-21138 (Vacuum)
- AFS-230-300-10 (Pressure)

Specifications subject to change without notice. Please contact factory for specification updates.

**Selection & Ordering Data - Type 3BA1840**

Curve No.	Order No.	Fre- quency Hz	Rated power HP	Input voltage		Input current A	Permissible total differential pressure <sup>2)</sup>		Sound pressure level <sup>3)</sup> dB(A)	Weight ca. lbs	
				V			Vacuum inch H2O	Compressor inch H2O			
<b>3~ 50/60 Hz IP55 insulation material class F</b>											
A 320	3BA1840-7AT26	50	10.05	200D ... 240D	345Y ... 415Y	29.0D	16.7Y	-80	72	74	352
A 321	3BA1840-7AT26	60	11.52	220D ... 250D	415Y ... 460Y	27.5D	15.0Y	-60	48	78	352
A 322	3BA1840-7AT36	50	14.74	200D ... 240D	345Y ... 415Y	48.5D	28.0Y	-112	149	74	441
A 323	3BA1840-7AT36	60	16.98	220D ... 250D	415Y ... 460Y	50.2D	29.0Y	-124	141	78	441

Suitable for 208 Volt Operation

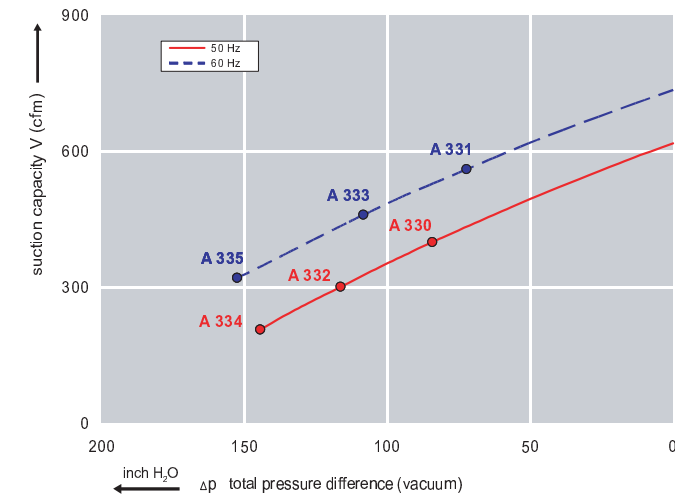
All curves are rated at 14.7 psia and 68° F ambient conditions and are reported in SCFM referenced to 68° F and 14.696 psia sea level conditions. Curve values are nominal, actual performance may vary by up to 10% of the values indicated. For inlet temperatures above approximately 80 °F or for handling gases other than air, please contact your Airtech sales representative for assistance.

### Features:

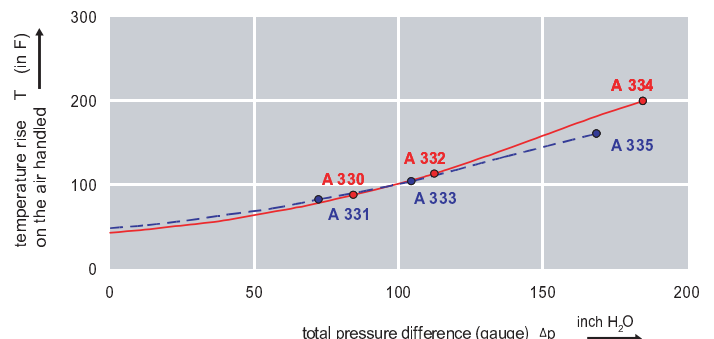
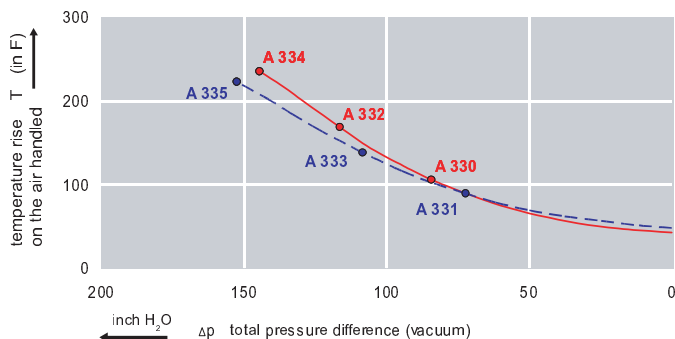
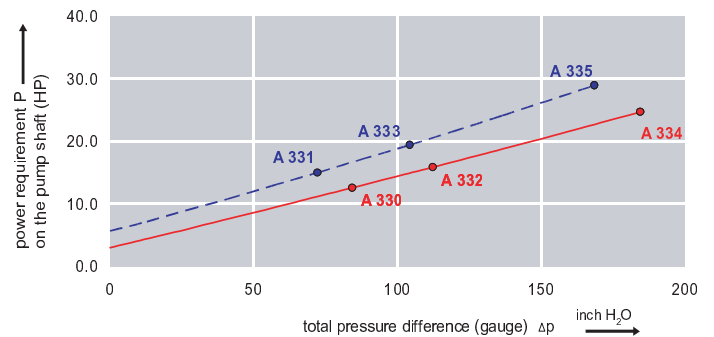
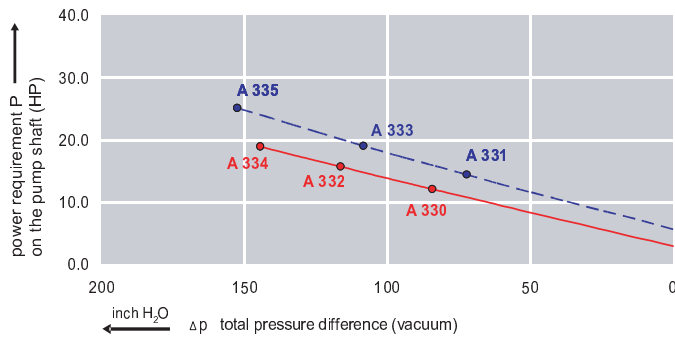
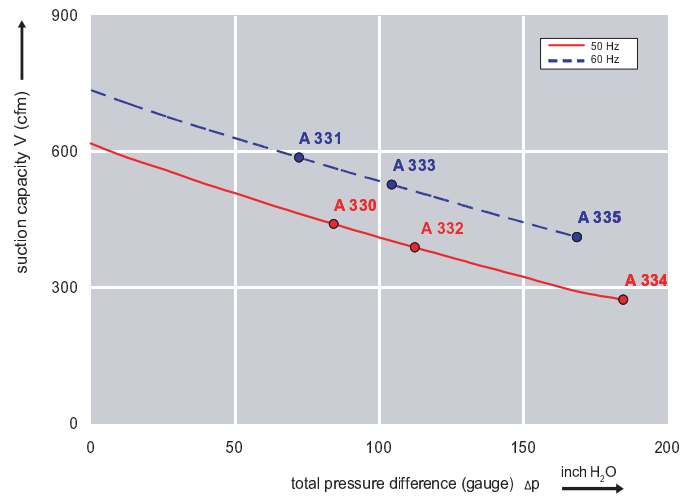


- Cooler running, outboard bearing provides maintenance-free operation
- Environmentally friendly oil-free technology
- Extremely quiet operation
- All motors are standard TEFC with Class F insulation, UL recognized, CE Compliant  
*Explosion-Proof motors available*
- Custom construction blowers are available
- Rugged die cast aluminum construction

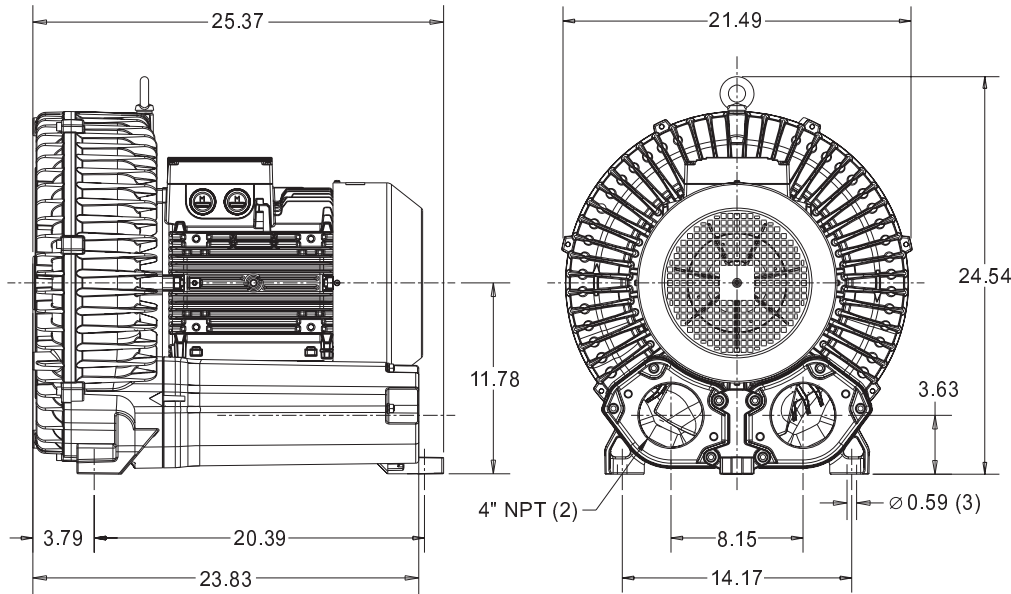
Performance curve for Vacuum pump



Performance curve for Compressor



### Dimensions: (inches)



### Recommended Accessories:

#### Relief valve:

VC100Z  
(Vacuum)

PC100Z  
(Pressure)

#### Filter:

ATF-400-21138  
(Vacuum)

AFS-234-400-10  
(Pressure)

Specifications subject to change without notice. Please contact factory for specification updates.

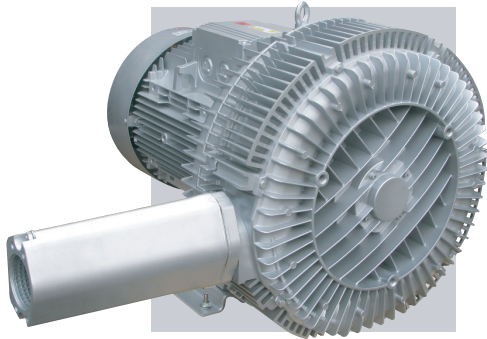
### Selection & Ordering Data - Type 3BA1900

Curve No.	Order No.	Fre- quency Hz	Rated power HP	Input voltage		Input current		Permissible total differential pressure		Sound pressure level dB(A)	Weight lbs
				V		A		Vacuum inch H2O	Compressor inch H2O		
<b>3~ 50/60 Hz IP55 insulation material class F</b>											
A 330	3BA1900-7AT06	50	10.72	200D ... 240D	345Y ... 415Y	31.5D	18.2Y	-76	76	74	265
A 331	3BA1900-7AT06	60	12.06	220D ... 250D	415Y ... 460Y	31.5D	18.2Y	-60	56	79	265
A 332	3BA1900-7AT16	50	16.76	200D ... 240D	345Y ... 415Y	48.5D	28.0Y	-116	112	74	295
A 333	3BA1900-7AT16	60	19.44	220D ... 250D	415Y ... 460Y	50.0D	29.0Y	-108	104	79	295
A 334	3BA1900-7AT36	50	24.80	200D ... 240D	345Y ... 415Y	64.5D	37.0Y	-145	185	74	314
A 335	3BA1900-7AT36	60	28.55	220D ... 250D	415Y ... 460Y	68.0D	39.0Y	-153	169	79	314

Suitable for 208 Volt Operation

All curves are rated at 14.7 psia and 68° F ambient conditions and are reported in SCFM referenced to 68° F and 14.696 psia sea level conditions. Curve values are nominal, actual performance may vary by up to 10% of the values indicated. For inlet temperatures above approximately 80 °F or for handling gases other than air, please contact your Airtech sales representative for assistance.

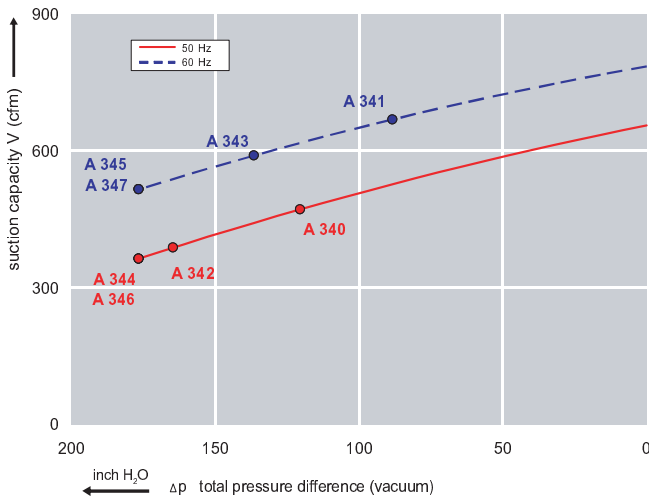




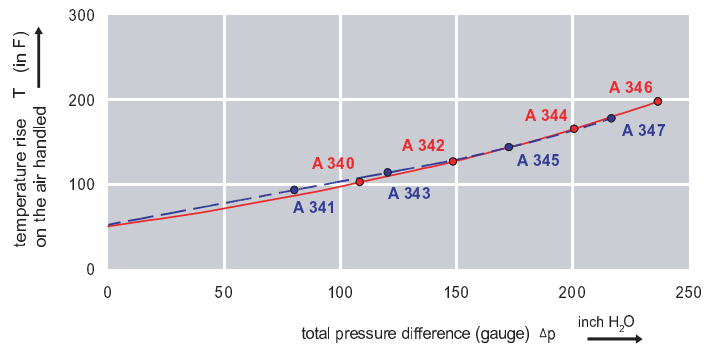
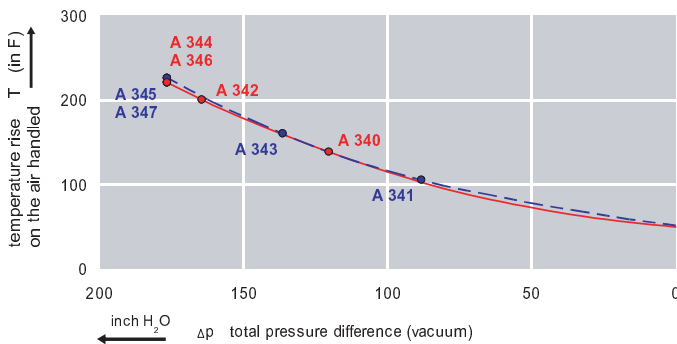
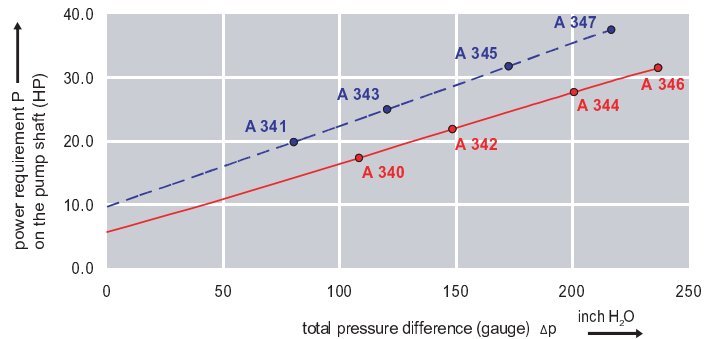
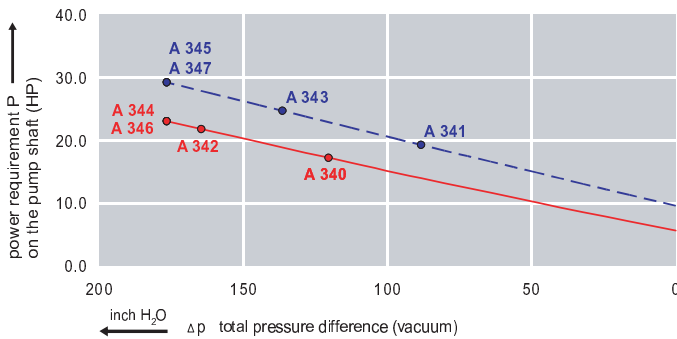
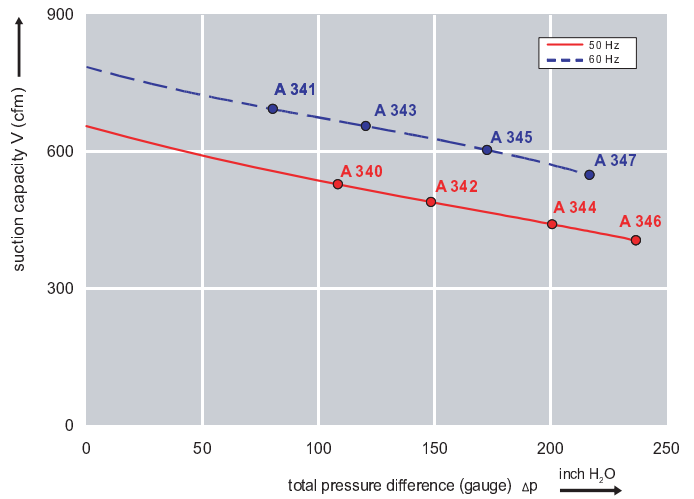
### Features:

- Cooler running, outboard bearing provides maintenance-free operation
- Environmentally friendly oil-free technology
- Extremely quiet operation
- All motors are standard TEFC with Class F insulation, UL recognized, CE Compliant  
*Explosion-Proof motors available*
- Custom construction blowers are available
- Rugged die cast aluminum construction

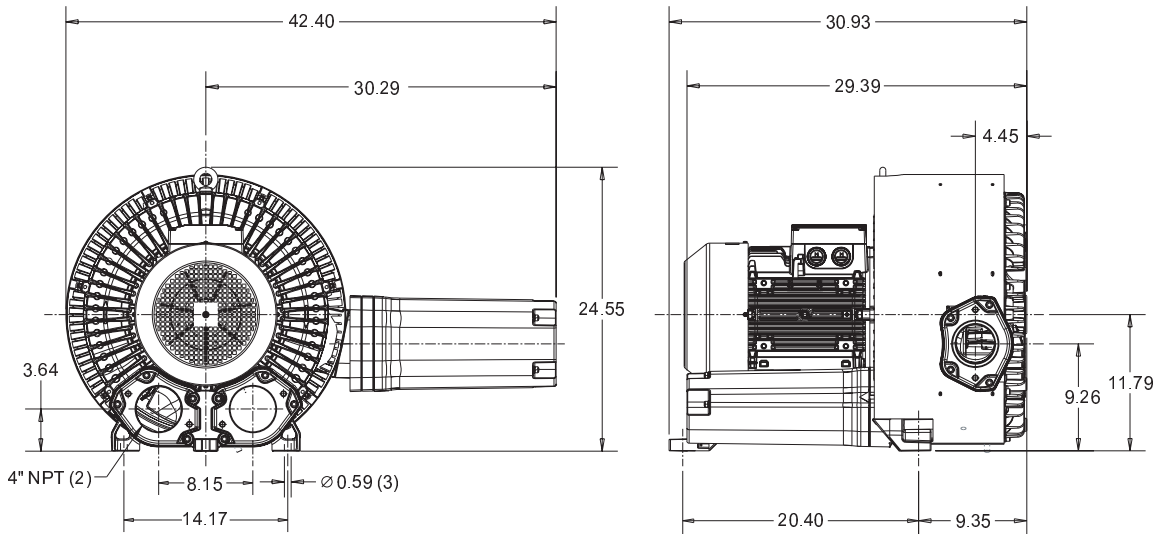
Performance curve for Vacuum pump



Performance curve for Compressor



### Dimensions: (inches)



### Recommended Accessories:

#### Relief valve:

VC100Z  
(Vacuum)

PC100Z  
(Pressure)

#### Filter:

ATF-400-21138  
(Vacuum)

AFS-234-400-10  
(Pressure)

Specifications subject to change without notice. Please contact factory for specification updates.

### Selection & Ordering Data - Type 3BA1910

Curve No.	Order No.	Fre- quency Hz	Rated power HP	Input voltage		Input current A	Permissible total differential pressure		Sound pressure level dB(A)	Weight lbs	
				V			Vacuum inch H2O	Compressor inch H2O			
<b>3~ 50/60 Hz IP55 insulation material class F</b>											
A 340	3BA1910-7AT16	50	16.75	200D ... 240D	345Y ... 415Y	48.5D	28.0Y	-120	108	74	409
A 341	3BA1910-7AT16	60	19.43	220D ... 250D	415Y ... 460Y	50.0D	29.0Y	-88	80	84	409
A 342	3BA1910-7AT26	50	22.12	200D ... 240D	345Y ... 415Y	60.0D	35.0Y	-165	149	74	428
A 343	3BA1910-7AT26	60	25.47	220D ... 250D	415Y ... 460Y	63.0D	36.5Y	-136	120	84	428
A 344	3BA1910-7AT36	50	26.81	200D ... 240D	345Y ... 415Y	69.0D	40.0Y	-177	201	74	455
A 345	3BA1910-7AT36	60	30.82	220D ... 250D	415Y ... 460Y	72.0D	42.0Y	-177	173	84	455
A 346	3BA1910-7AT46	50	33.51	200D ... 240D	345Y ... 415Y	90.0D	52.0Y	-177	237	74	500
A 347	3BA1910-7AT46	60	38.87	220D ... 250D	415Y ... 460Y	90.0D	52.0Y	-177	217	84	500

Suitable for 208 Volt Operation

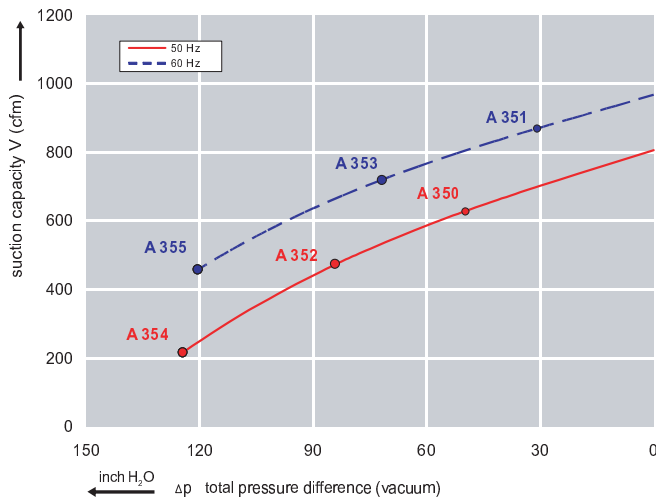
All curves are rated at 14.7 psia and 68°F ambient conditions and are reported in SCFM referenced to 68°F and 14.696 psia sea level conditions. Curve values are nominal, actual performance may vary by up to 10% of the values indicated. For inlet temperatures above approximately 80°F or for handling gases other than air, please contact your Airtech sales representative for assistance.

### Features:

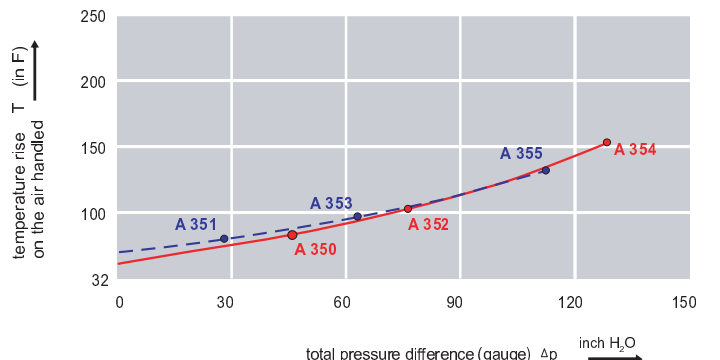
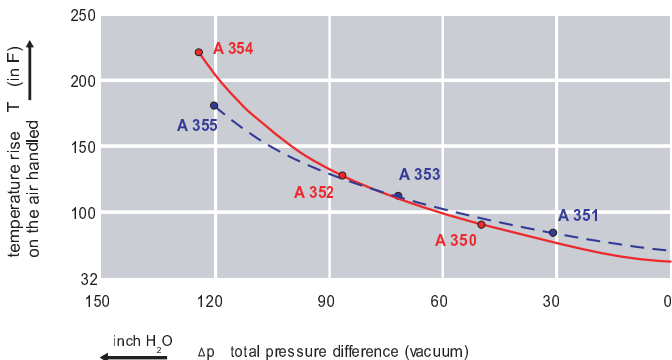
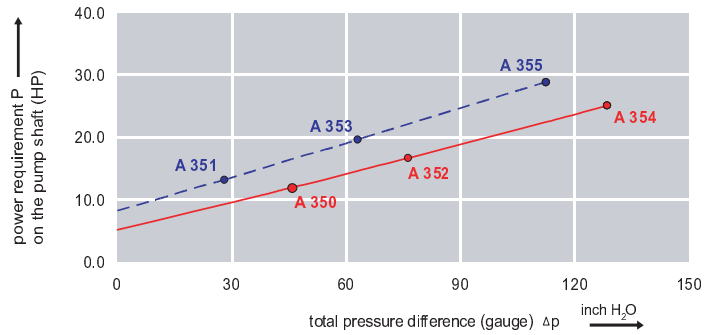
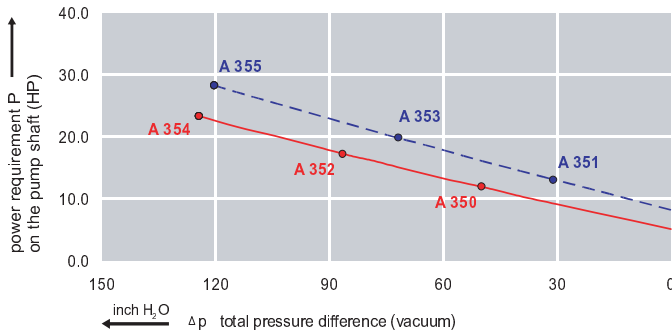
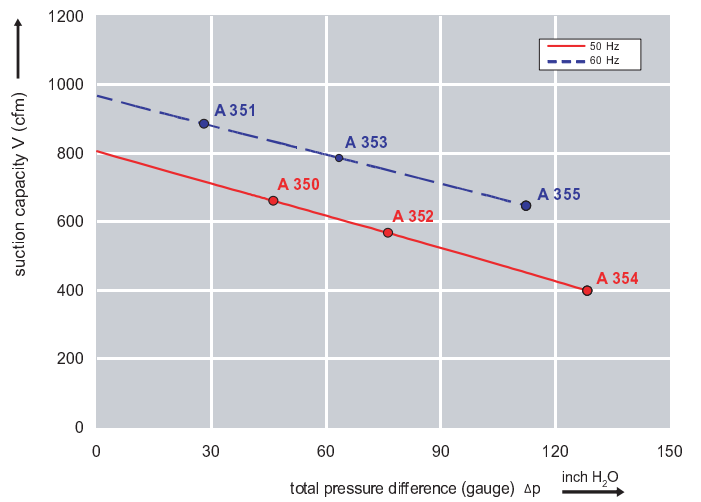


- Cooler running, outboard bearing provides maintenance-free operation
- Environmentally friendly oil-free technology
- Extremely quiet operation
- All motors are standard TEFC with Class F insulation, UL recognized, CE Compliant  
*Explosion-Proof motors available*
- Custom construction blowers are available
- Rugged die cast aluminum construction

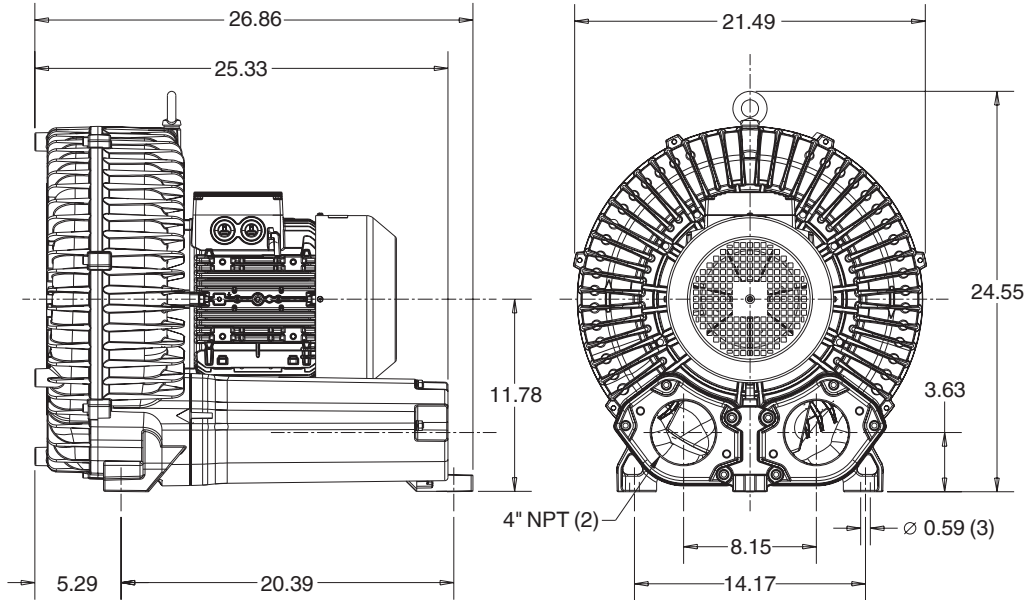
Performance curve for Vacuum pump



Performance curve for Compressor



### Dimensions: (inches)



### Recommended Accessories:

#### Relief valve:

VC100Z  
(Vacuum)

PC100Z  
(Pressure)

#### Filter:

ATF-400-21138  
(Vacuum)

AFS-234-400-10  
(Pressure)

Specifications subject to change without notice. Please contact factory for specification updates.

### Selection & Ordering Data - Type 3BA1930

Curve No.	Order No.	Fre- quency Hz	Rated power HP	Input voltage		Input current A	Permissible total differential pressure		Sound pressure level dB(A)	Weight lbs	
				V			Vacuum inch H2O	Compressor inch H2O			
<b>3~ 50/60 Hz IP55 insulation material class F</b>											
A 350	3BA1930-7AT06	50	11.39	200D ... 240D	345Y ... 415Y	33.0D	19.1Y	-48	44	75	268
A 351	3BA1930-7AT06	60	13.14	220D ... 250D	415Y ... 460Y	33.0D	19.1Y	-32	28	80	268
A 352	3BA1930-7AT16	50	16.75	200D ... 240D	345Y ... 415Y	48.5D	28.0Y	-84	76	75	298
A 353	3BA1930-7AT16	60	19.43	220D ... 250D	415Y ... 460Y	50.0D	29.0Y	-72	64	80	298
A 354	3BA1930-7AT36	50	24.80	200D ... 240D	345Y ... 415Y	64.5D	37.0Y	-124	128	75	318
A 355	3BA1930-7AT36	60	28.54	220D ... 250D	415Y ... 460Y	68.0D	39.0Y	-120	112	80	318

Suitable for 208 Volt Operation

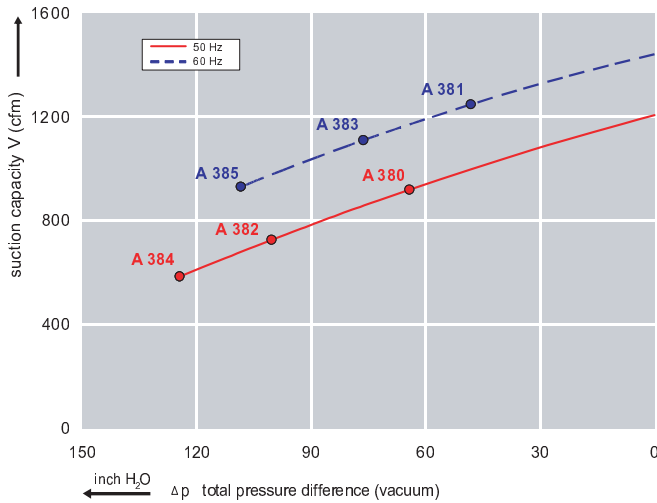
All curves are rated at 14.7 psia and 68°F ambient conditions and are reported in SCFM referenced to 68°F and 14.696 psia sea level conditions. Curve values are nominal, actual performance may vary by up to 10% of the values indicated. For inlet temperatures above approximately 80°F or for handling gases other than air, please contact your Airtech sales representative for assistance.



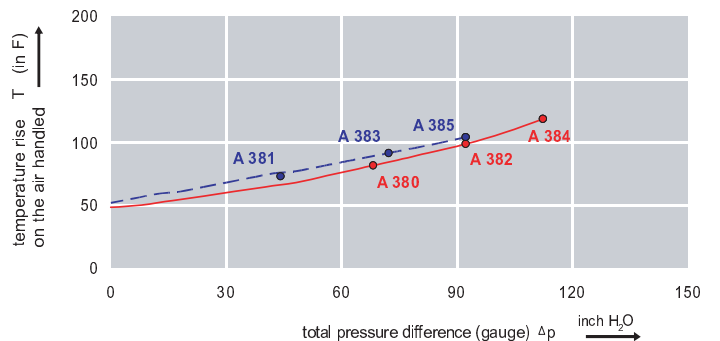
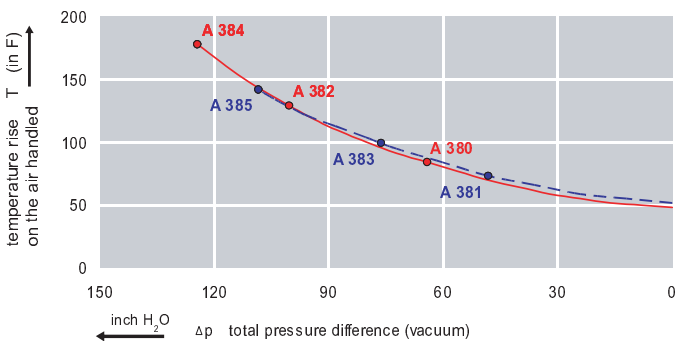
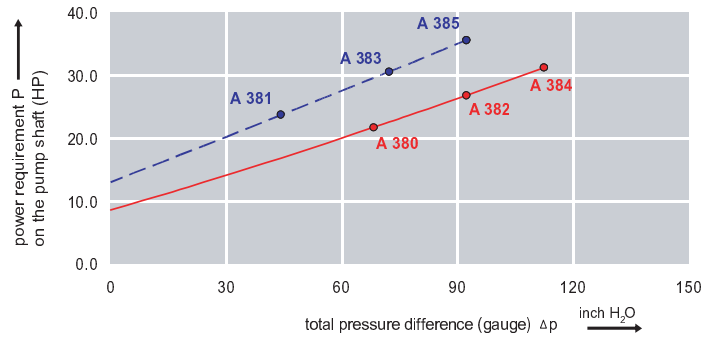
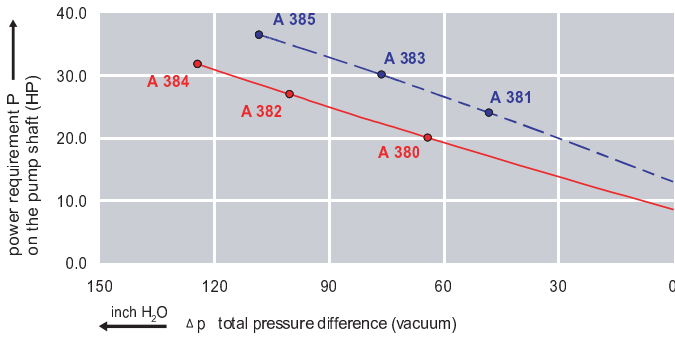
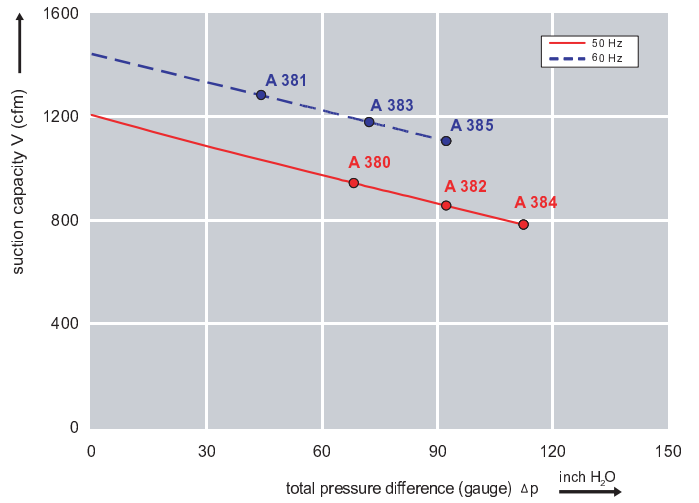
### Features:

- Cooler running, outboard bearing provides maintenance-free operation
- Environmentally friendly oil-free technology
- Extremely quiet operation
- All motors are standard TEFC with Class F insulation, UL recognized, CE Compliant  
*Explosion-Proof motors available*
- Custom construction blowers are available
- Rugged die cast aluminum construction

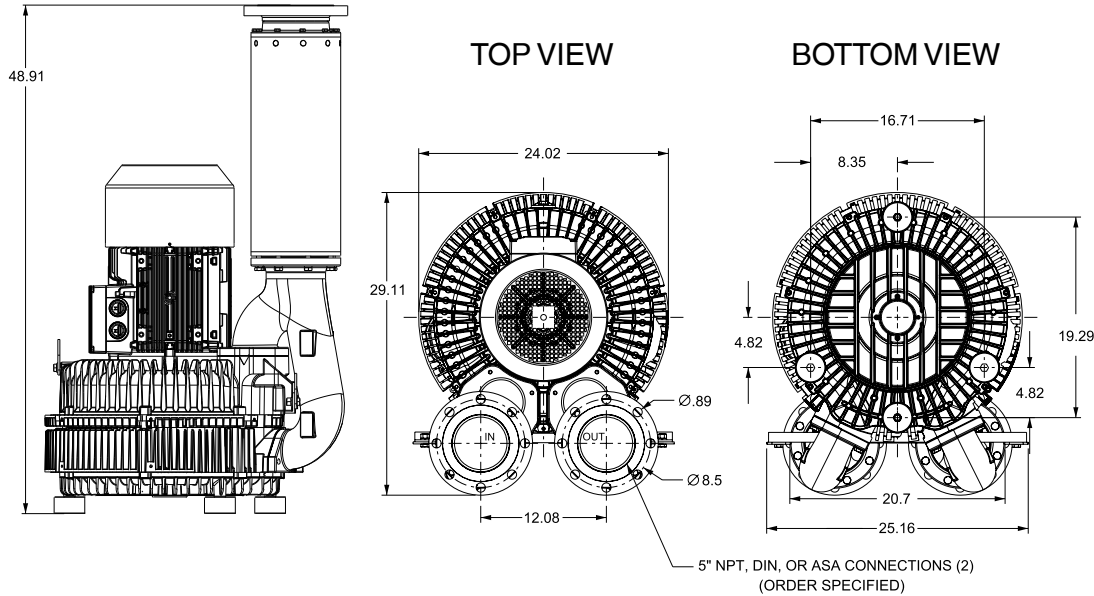
Performance curve for Vacuum pump



Performance curve for Compressor



### Dimensions: (inches)



### Recommended Accessories:

#### Relief valve:

VC110Z  
(Vacuum)

PC110Z  
(Pressure)

#### Filter:

ATF-500-344P  
(Vacuum)

AFS-244-500-10  
(Pressure)

Specifications subject to change without notice. Please contact factory for specification updates.

### Selection & Ordering Data - Type 3BA1943

Curve No.	Order No.	Fre- quency Hz	Rated power HP	Input voltage		Input current A	Permissible total differential pressure		Sound pressure level dB(A)	Weight lbs	
				V			Vacuum inch H2O	Compressor inch H2O			
<b>3~ 50/60 Hz IP55 insulation material class F</b>											
A 380	3BA1943-7AT26	50	20.1	200D ... 240D	345Y ... 415Y	59.0D	34.0Y	-64	68	75	417
A 381	3BA1943-7AT26	60	23.4	220D ... 250D	415Y ... 460Y	63.0D	36.5Y	-48	44	84	417
A 382	3BA1943-7AT36	50	26.8	200D ... 240D	345Y ... 415Y	69.0D	40.0Y	-100	92	75	463
A 383	3BA1943-7AT36	60	30.8	220D ... 250D	415Y ... 460Y	72.0D	42.0Y	-76	72	84	463
A 384	3BA1943-7AT46	50	33.5	200D ... 240D	345Y ... 415Y	90.0D	52.0Y	-124	112	75	509
A 385	3BA1943-7AT46	60	38.8	220D ... 250D	415Y ... 460Y	90.0D	52.0Y	-108	92	84	509

Suitable for 208 Volt Operation

All curves are rated at 14.7 psia and 68° F ambient conditions and are reported in SCFM referenced to 68° F and 14.696 psia sea level conditions. Curve values are nominal, actual performance may vary by up to 10% of the values indicated. For inlet temperatures above approximately 80° F or for handling gases other than air, please contact your Airtech sales representative for assistance.