

## mid pressure aluminum filters

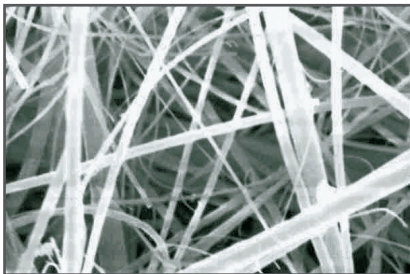
### FEATURES

- unique range of up to 725 psig die cast aluminum filters for high pressure applications
- 9 models in 3 different housings up to 1600 scfm
- choose from 6 different element grades including water separators, 25, 5, 1 and 0.01 micron coalescing and/or dust filtration and activated carbon
- manufactured from machined and die cast aluminum
- E-Coat™ optimum corrosion protection provided by an internal and external epoxy powder coating followed by an external tough polyester powder coat finish
- innovative push-fit element design with dual o-ring seal to ensure optimum sealing and mechanical strength
- manufactured in an ISO 9001 approved facility and tested in accordance with ISO 8573-1:2010
- includes a hydrostatic test certificate and serial number for complete traceability
- CRN and ASME approved
- applications include PET bottle manufacturing, offshore instrumentation, medical and heavy industrial



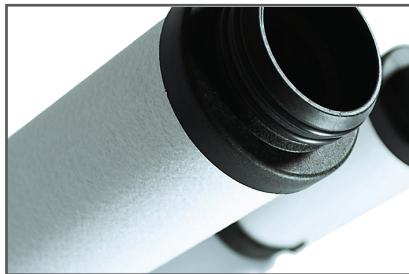
#### proprietary media technology

hydrophobic and oleophobic borosilicate glass microfiber media repels oil and water for lower differential pressure



#### element design

robust design with internal/external stainless steel support cores and glass filled nylon end caps



nano-purification solutions  
charlotte, north carolina  
united states

nano-purification solutions  
new bethlehem, pennsylvania  
united states

nano-purification solutions  
st. catharines, ontario  
canada

nano-purification solutions  
gateshead, tyne and wear  
united kingdom

nano-purification solutions  
erkelenz, germany

tel: 704.897.2182  
fax: 704.897.2183  
email: support@n-psi.com  
web: www.n-psi.com

# SPECIFICATIONS

filter model	inlet & outlet		rated flow <sup>(1)</sup>		dimensions (inches)				approx. weight	replacement element
	NPT	scfm	Nm <sup>3</sup> /h	A	B	C	D	lbs		
N50A 0094 (grade)	¼"	94	160	2.48	0.55	5.71	1.97	1.3	E50HP 0094 (grade)	
N50A 0147 (grade)	⅜"	147	250	2.48	0.55	6.89	1.97	1.4	E50HP 0147 (grade)	
N50A 0265 (grade)	½"	265	450	4.33	1.50	10.75	5.91	6.2	E50HP 0265 (grade)	
N50A 0324 (grade)	¾"	324	550	4.33	1.50	10.75	5.91	6.1	E50HP 0324 (grade)	
N50A 0492 (grade)	1"	492	835	4.33	1.50	14.09	5.91	7.4	E50HP 0492 (grade)	
N50A 0736 (grade)	1½"	736	1250	5.75	2.01	19.29	6.69	16.3	E50HP 0736 (grade)	
N50A 1015 (grade)	1½"	1015	1725	5.75	2.01	19.29	6.69	16.3	E50HP 1132 (grade)	
N50A 1132 (grade)	2"	1132	1925	5.75	2.01	19.29	6.69	15.8	E50HP 1132 (grade)	
N50A 1882 (grade)	2"	1882	3200	5.75	2.01	27.05	6.69	21.9	E50HP 1882 (grade)	

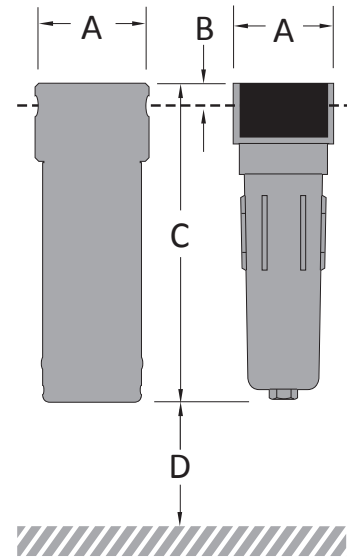
## specifications

design operating pressure range <sup>(1)</sup>	0 to 725 psig
condensate drain (included)	manual ball valve
filter housing material	machined & die cast aluminum

element performance	WS	M25	M5	M1	M01	AC
particle removal (microns)	-	25	5	1	0.01	-
max oil carry over at 68°F (ppm or mg/m <sup>3</sup> )	25	10	5	0.1	0.01	0.003
recommended operating temp range	35 to 212°F	35 to 212°F	35 to 212°F	35 to 212°F	35 to 212°F	35 to 77°F
design operating temperature range	35 to 248°F	35 to 248°F	35 to 248°F	35 to 248°F	35 to 248°F	35 to 122°F

## pressure correction factors

operating pressure (psig)	60	90	120	150	220	290	435	580	640	725
correction factors for models N50A 0094 to 0492	0.14	0.22	0.28	0.34	0.47	0.56	0.70	0.85	-	1.00
correction factors for models N50A 0736 to 1882	0.17	0.24	0.31	0.38	0.51	0.62	0.79	0.94	1.00	-



- (1) ¼" to 1" NPT maximum design operating pressure 725 psig at 248°F with full CRN certification. Other connections 580 psig at 248°F with full CRN certification, 640 psig at 248°F with no CRN certification. For all other pressures, refer to the pressure correction factor table above
- (2) differential pressure indicator not included
- (3) install with air flow from inside to outside for coalescing and from outside to inside for dry dust filtration
- (4) technical specifications subject to change without notice. Direct inquiries to support@n-psi.com or contact 704.897.2182