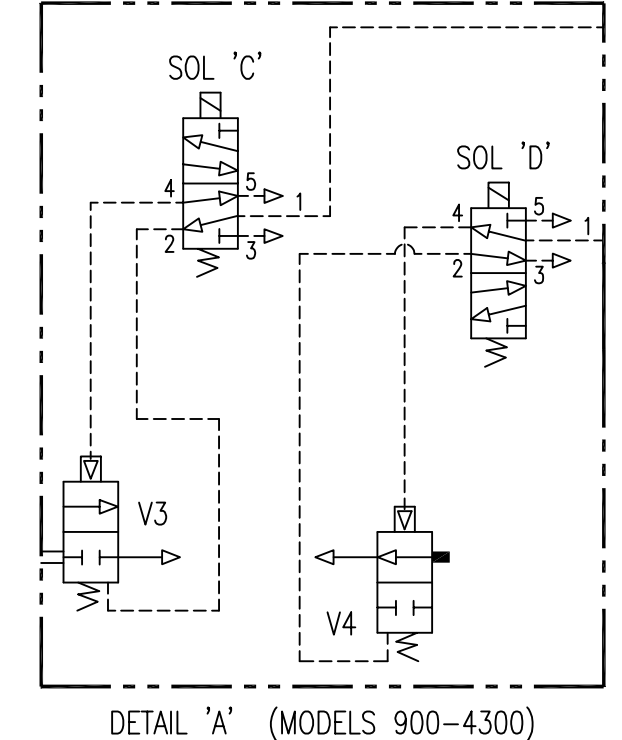


- REVISIONS -							
ZONE	REV	DESCRIPTION	CHG BY	CHK BY	APP BY	REL BY	DATE
-	A	MOVED 3PS & 4PS.	SDM	DEH	DEH	SDM	09/22/04
-	B	1TC SETPOINT WAS 380°F.	SDM	DEH	DEH	SDM	10/18/04
-	C	ADDED ITEM 44A.	SDM	DEH	DEH	SDM	09/08/05
-	D	ADD SOL VALVE.	CPG	DPM	DPM	SDM	06/23/10
-	E	ADDED HEATER COOL DOWN SEQUENCE	GMJ	DPM	DPM	CRH	01/26/11
-	F	ADDED HEATER DUAL RTD/TC	SDM/BEK	MHO	MHO	SDM/BEK	05/31/19

- LEGEND**
- INLET VALVE (V1 LEFT, V2 RIGHT)
 - PURGE EXHAUST VALVE (V3 LEFT, V4 RIGHT)
 - PURGE CHECK VALVE (V5 LEFT, V6 RIGHT) (NO SPRING)
 - OUTLET CHECK VALVE (V7 LEFT, V8 RIGHT)
 - DEPRESS SOLENOID VALVE (V9 LEFT, V10 RIGHT)
 - PURGE HEATER WITH INSULATION
 - HEATER TEMPERATURE SINGLE PROBE - DUAL THERMOCOUPLE/OVERTEMPERATURE RTD
 - CHAMBER RTD (LEFT & RIGHT)
 - RELIEF VALVE
 - CHAMBER PRESSURE GAUGES (LEFT & RIGHT)
 - CHAMBER PRESSURE SWITCH (LEFT & RIGHT)
 - SERVICE VALVE
 - PILOT AIR FILTER
 - PRESSURE REGULATOR & GAUGE
 - SOLENOID VALVE
 - MUFFLER
 - DESICCANT CHAMBER
 - DESICCANT RETAINING SCREEN (TOP & BOTTOM)
 - DESICCANT FILL PORT
 - DESICCANT DRAIN PORT
 - HOT PIPE INSULATION
 - PURGE BLOWER AND MOTOR
 - PURGE SUCTION FILTER SILENCER
 - REPRESS/SWEEP SOLENOID VALVE (V11)
 - REPRESS/SWEEP CHECK VALVE (V12 LEFT, V13 RIGHT)
 - REPRESS/SWEEP ORIFICE
 - CHAMBER BLOW-DOWN VALVE
 - TEMPERATURE SWITCH (MODELS 3200-4300 ONLY)
 - THRU 41. (NOT USED)
- ENERGY MGMT OPTION**
- ENERGY MANAGEMENT PILOT OPERATED VALVE
 - ENERGY MANAGEMENT SENSOR (RTD4/HS1)
- DEWPOINT OPTION**
- DEWPOINT ANALYZER
 - DEWPOINT ANALYZER FILTER
- F01 OPTION**
- PREFILTER (WITH INTEGRAL DIFF. PRESS. GAUGE)
 - AFTERFILTER (WITH INTEGRAL DIFF. PRESS. GAUGE)
 - PILOT AIR LINE AND SERVICE VALVE (IF REQUIRED)
 - PILOT AIR LINE AND SERVICE VALVE (IF REQUIRED)
 - PILOT LINE INLET FILTER (IF REQUIRED)
 - PILOT AIR PRESSURE REGULATOR & GAUGE (IF REQUIRED)
- F02 OPTION**
- SYSTEM BLOCK VALVE
 - SYSTEM BYPASS VALVE
- INSULATION OPTION**
- CHAMBER INSULATION



FIXED CYCLE TIMING (TIME IN MINUTES)	LEFT CHAMBER DRYING (RIGHT CHAMBER REGEN)					RIGHT CHAMBER DRYING (LEFT CHAMBER REGEN)					LOSS OF POWER	
	2	176	4	55	3	2	176	4	55	3		
ELECTRICAL COMPONENT												
ENERGIZED												
PROCESS COMPONENT												
PROCESS STATUS COMPONENT												
DEPRESSURIZATION												
HEATING												
HEATER COOL DOWN (NUMBER SELECTABLE)												
2ND STAGE REGENERATION (NUMBER SELECTABLE)												
REPRESSURIZATION												
HOLD												
DEPRESSURIZATION												
HEATING												
HEATER COOL DOWN (NUMBER SELECTABLE)												
2ND STAGE REGENERATION (NUMBER SELECTABLE)												
REPRESSURIZATION												
HOLD												
SOLENOID VALVE 'A' 3 WAY	YES					NO						*
SOLENOID VALVE 'B' 3 WAY	YES					NO						*
SOLENOID VALVE 'C' 3 WAY	YES					NO						*
SOLENOID VALVE 'D' 3 WAY	YES					NO						
SOLENOID VALVE 'E' N.C.	YES					NO						
SOLENOID VALVE 'F' N.C.	YES					NO						
SOLENOID VALVE 'G' N.C.	YES					NO						
HEATER	YES					NO						
BLOWER MOTOR	YES					NO						

* = FAILS IN POSITION

UNLESS OTHERWISE SPECIFIED:		NAME	DATE	UNAUTHORIZED USE, MANUFACTURE, OR REPRODUCTION IN WHOLE OR IN PART IS PROHIBITED. DRAWING DESIGN AND OTHER DISCLOSURES ARE PROPERTY OF:
DIMENSIONS ARE IN:	N/A	DWN BY	SDM 09/03/04	
SURFACE FINISH:	N/A	ENG BY	DEH 09/03/04	
TOL.	MM INCHES	CHK BY	JET 09/03/04	P & ID ZP MODELS 750-4300 SCFM
.X	-	APP BY	DEH 09/03/04	
.XX	-	REL BY	SDM 09/03/04	
.XXX	-	MAT NO.	----	SIZE
FRAC: N/A	ANG: N/A			DWG. NO.
SCALE: NONE	WT: N/A			0017108-D1B
				REV. SHEET
				F 1/1

- NOTES**
- SYMBOLS ARE PER ANSI Y32.10 "GRAPHIC SYMBOLS FOR FLUID POWER DIAGRAMS."
 - AS SHOWN FLOW DIRECTION IS:
 - SOLID LINE: LEFT CHAMBER DRYING
 - DASHED LINE: RIGHT CHAMBER REGEN
 - DOTTED LINE: PILOT GAS LINE
 - SOLENOID VALVES 'B', 'D', & 'G' ARE SHOWN ENERGIZED, SOLENOID VALVES 'A', 'C', 'E', & 'F' ARE SHOWN DE-ENERGIZED.
 - [] INDICATES OPTION

