

| - REVISIONS - |     |                                       |        |        |        |        |          |
|---------------|-----|---------------------------------------|--------|--------|--------|--------|----------|
| ZONE          | REV | DESCRIPTION                           | CHG BY | CHK BY | APP BY | REL BY | DATE     |
| -             | A   | UPDATE PILOT AIR FILTER TO NGF STYLE. | NDM    | SDM    | DEH    | SDM    | 07/02/14 |
| -             | B   | 308 PRE AND AFTERFILTERS WERE 307.    | SDM    | DEH    | DEH    | SDM    | 07/20/15 |

NOTES:

- THIS DRAWING, TOGETHER WITH P&ID AND SPECIFICATION SHEET, PROVIDES OPERATING CONDITIONS, SPECIFICATIONS, INSTALLATION, MOUNTING AND CONNECTION REQUIREMENTS.
- DESICCANT DRYER CHAMBERS ARE DESIGNED AND BUILT IN ACCORDANCE WITH THE CURRENT CODE AND ADDENDA OF SECTION VIII, DIV. I, OF THE A.S.M.E. CODE FOR UNFIRED PRESSURE VESSELS.
- ELECTRICAL CONSTRUCTION IS IN ACCORDANCE WITH THE NATIONAL ELECTRICAL CODE.
- ANCHOR BOLTS ARE TO PROJECT A MINIMUM OF 2" ABOVE THE FOUNDATION. ANCHOR BOLTS SHOULD BE INSTALLED IN SLEEVES TO ALLOW SOME ADJUSTMENT AT TIME OF INSTALLATION.
- EXTERNAL PIPING MUST BE RIGIDLY MOUNTED AND NOT SUPPORTED BY THIS UNIT.
- FOR MAINTENANCE PURPOSES, RECOMMENDED CLEARANCE AROUND UNIT IS 4 FEET [1220 MM].
- BREATHING AIR PURIFIERS CANNOT BE SUPPLIED WITH, OR REACTIVATED BY, ANY GAS OTHER THAN AIR. DO NOT PIPE PURGE EXHAUST TO A REMOTE LOCATION WITHOUT CONSULTING THE FACTORY.
- CUSTOMER SHOULD REQUEST A COPY OF QMS-013 IF PLANNING ON STORING UNIT LONG TERM BEFORE PLACING INTO SERVICE.

9. OPERATING CONDITIONS:

|                          |                                   |
|--------------------------|-----------------------------------|
| INLET AIR PRESSURE:      |                                   |
| MAXIMUM:                 | 150 PSIG 10.5 KGF/CM2             |
| MINIMUM:                 | 60 PSIG 4.2 KGF/CM2               |
| DESIGN:                  | 100 PSIG 7.0 KGF/CM2              |
| INLET AIR TEMPERATURE:   |                                   |
| MAXIMUM:                 | 140 °F 60 °C                      |
| MINIMUM:                 | 35 °F 1.7 °C                      |
| DESIGN:                  | 100 °F 37.8 °C                    |
| AMBIENT AIR TEMPERATURE: |                                   |
| MAXIMUM:                 | 120 °F 48.9 °C                    |
| MINIMUM:                 | 35 °F 1.7 °C                      |
| DESIGN:                  | 100 °F 37.8 °C                    |
| AIR FLOW:                |                                   |
| INLET:                   | 114 SCFM @ 100 PSIG & 100 °F      |
|                          | 194 M3/HR @ 7.0 KGF/CM2 & 37.8 °C |
| OUTLET:                  | 95 SCFM @ 100 PSIG & 100 °F       |
|                          | 161 M3/HR @ 7.0 KGF/CM2 & 37.8 °C |

10. SUPPLY POWER:

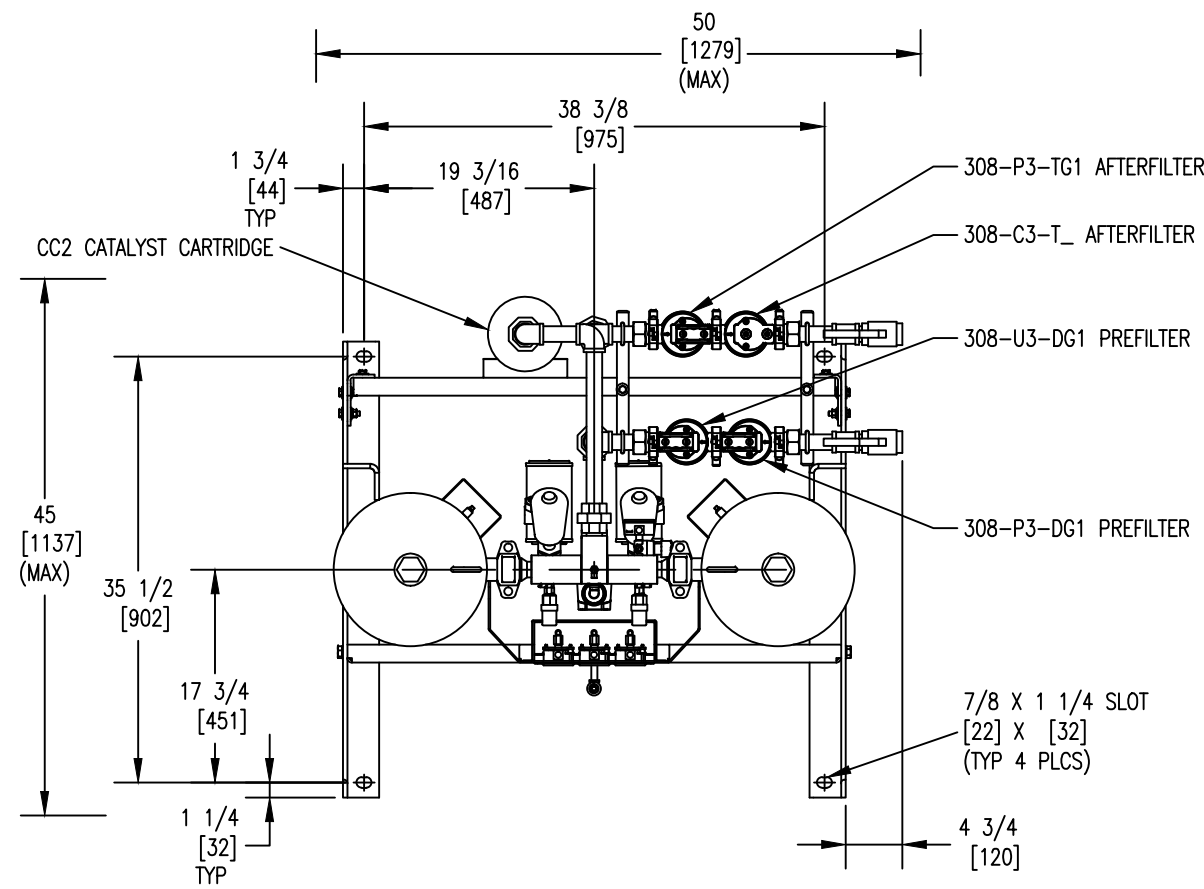
85-264 VAC, 1 PH, 47-63 HZ OR 11.5-28 VDC

11. AVAILABLE OPTIONS:

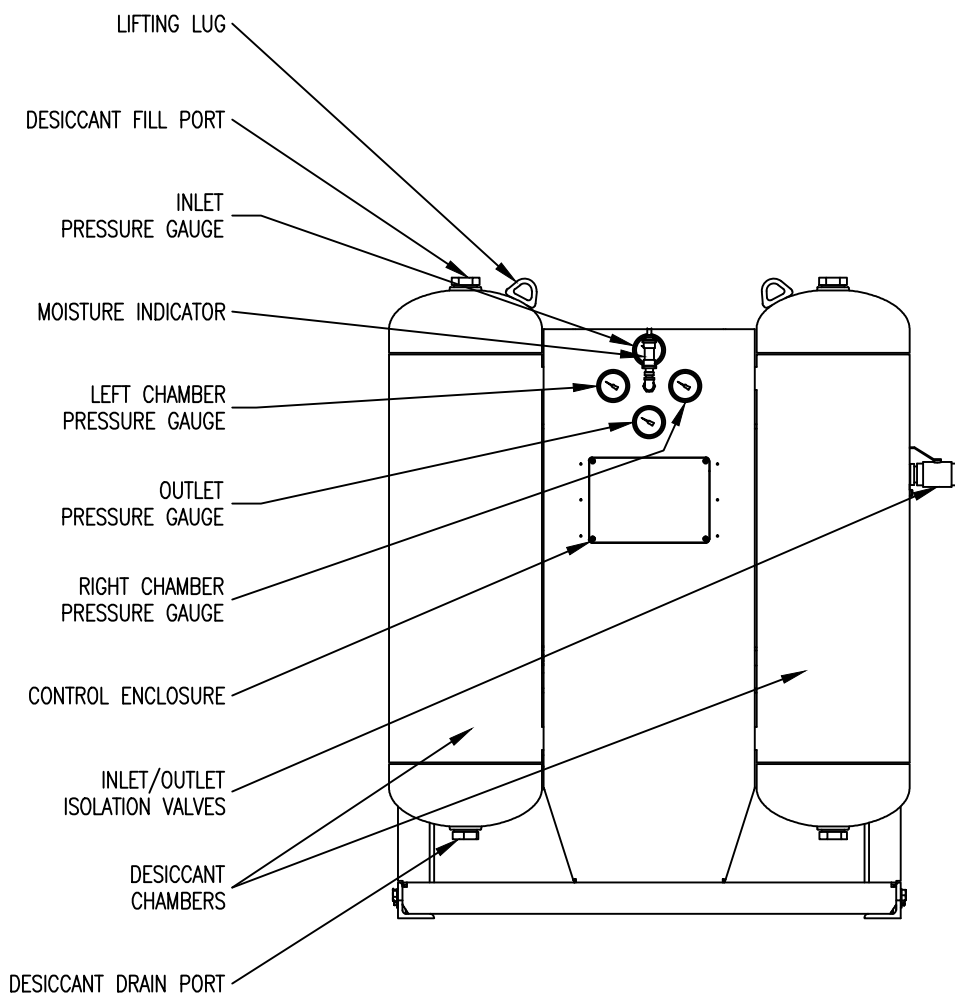
- L2 - ADVANCED CONTROLLER WITH:
  - VACUUM FLUORESCENT TEXT DISPLAY
  - PURGE SAVER(R) AUTOMATIC ENERGY SAVINGS
  - HIGH INLET AIR TEMPERATURE ALARM
  - LOW INLET AIR PRESSURE ALARM
- N7 - NEMA7 ELECTRICAL RATING
- CB - COPPER INSTRUMENT TUBING
- SS - STAINLESS STEEL INSTRUMENT TUBING, FITTINGS, AND GAUGES
- AZ1 - CO MONITOR
- AZ2 - CO & OXYGEN MONITOR
- AZ3 - CO & DEW POINT MONITOR
- AZ4 - CO, OXYGEN, & DEW POINT MONITOR
- 10 - SSPC-SP10 SANDBLAST & EPOXY PAINT

12. WEIGHTS: SHIPPING WEIGHT

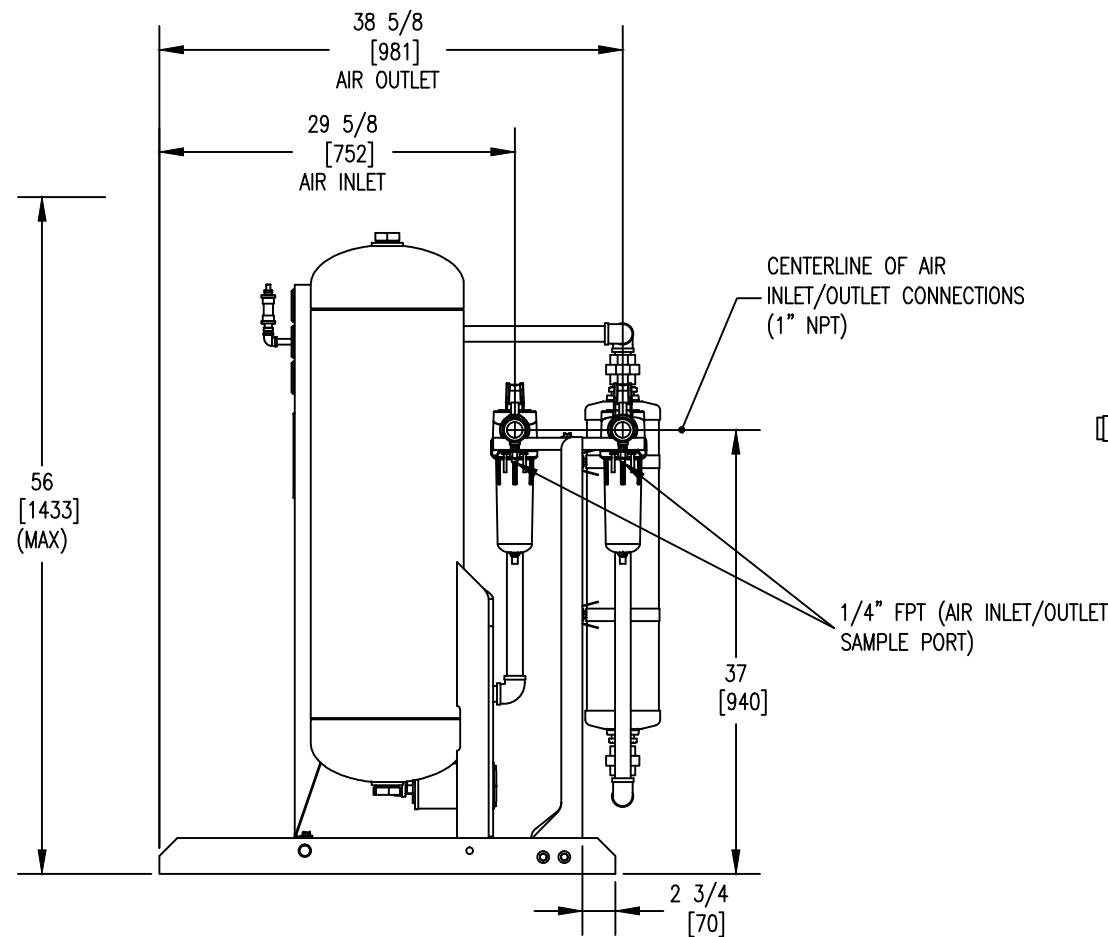
|                    |
|--------------------|
| 820 LBS. (APPROX.) |
| 373 KGS            |
| OPERATING WEIGHT   |
| 820 LBS. (APPROX.) |
| 373 KGS            |



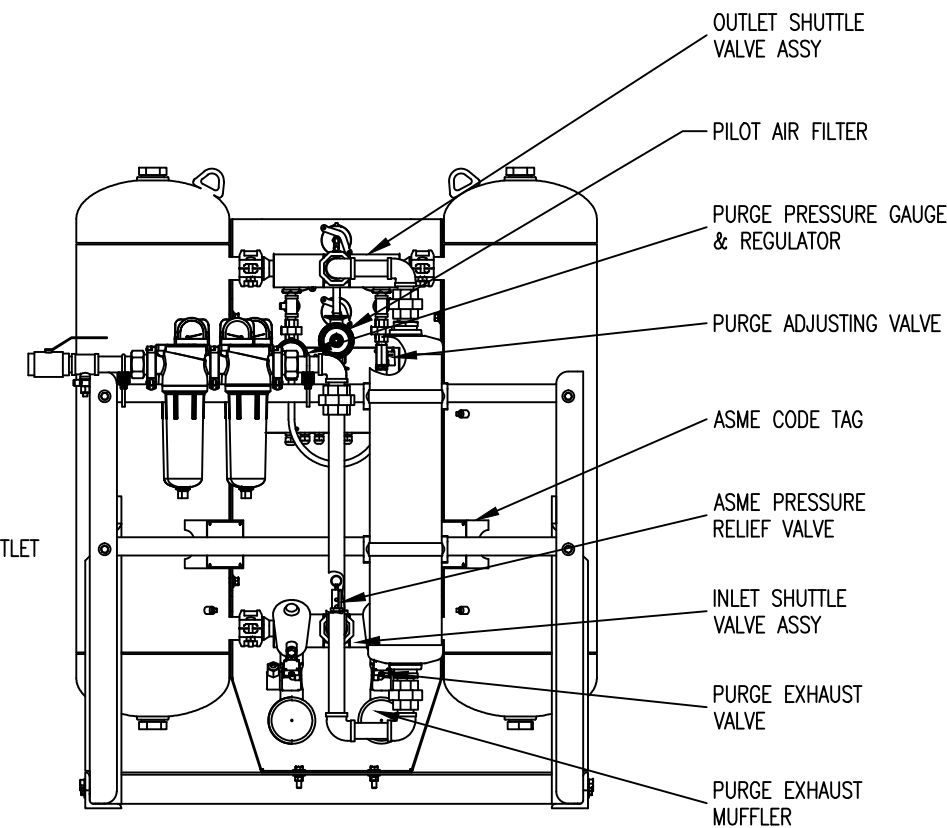
TOP VIEW



FRONT VIEW



SIDE VIEW



REAR VIEW

|                              |    |        |         |              |  |
|------------------------------|----|--------|---------|--------------|--|
| UNLESS OTHERWISE SPECIFIED:  |    |        | NAME    | DATE         | UNAUTHORIZED USE, MANUFACTURE, OR REPRODUCTION IN WHOLE OR IN PART IS PROHIBITED. DRAWING DESIGN AND OTHER DISCLOSURES ARE PROPERTY OF:<br><b>Deltech</b><br>* DO NOT SCALE. USE DIMENSIONS ONLY * |
| DIMENSIONS ARE IN: INCHES/MM |    |        | DWN BY  | MDB 04/30/14 |  |
| SURFACE FINISH: N/A ✓        |    |        | ENG BY  | SDM 04/30/14 |  |
| TOL.                         | MM | INCHES | CHK BY  | SDM 04/30/14 |  |
| .X                           | -  | -      | APP BY  | SDM 04/30/14 |  |
| .XX                          | -  | -      | REL BY  | SDM 04/30/14 |  |
| .XXX                         | -  | -      |         |              |  |
| FRACT: ±1/2 ANG: ±2°         |    |        | MAT NO. | ----         | SIZE   |
| SCALE: 1/16 WT: N/A          |    |        |         |              | DWG. NO.   |
|                              |    |        |         |              | 0072208-95   |
|                              |    |        |         |              | REV. SHEET   |
|                              |    |        |         |              | B 1/1  |

GENERAL ARRANGEMENT  
DM 95, BREATHING AIR PURIFIER