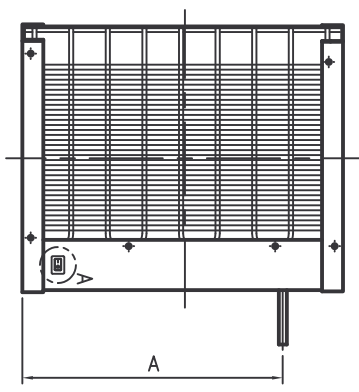
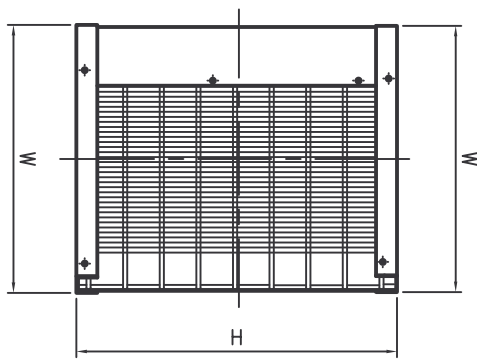
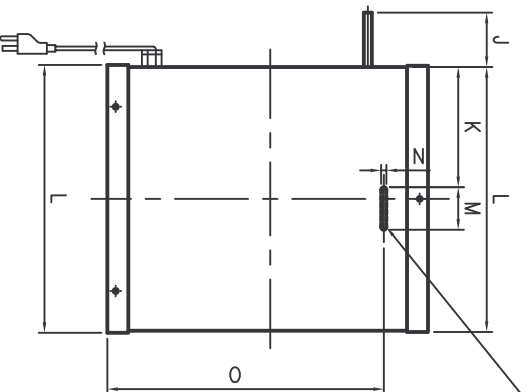
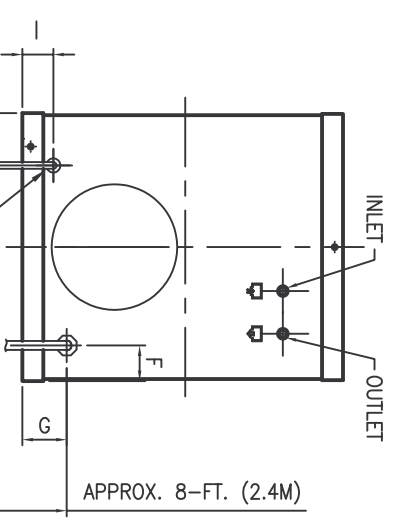
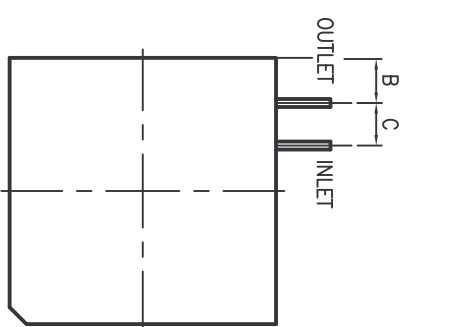


MODEL	DIMENSION											INLET/OUTLET CONNECTION	INLET AIR FLOW <SCFM>	NET WEIGHT <LBS>	SHIPPING WEIGHT <LBS>					
	A	B	C	D	E	F	G	H	I	J	K					L	M	N	O	W
HG15	12.3 {311}	2.1 {54}	2.0 {51}	10.9 {278}	2.5 {63}	1.7 {43}	2.1 {53}	15.0 {382}	1.54 {39}	2.5 {64}	5.7 {145}	12.6 {320}	2.0 {51}	2.5 {64}	13.0 {330}	12.6 {320}	3/8" O.D. TUBE	15	47	52

NOTE : PRIMARY DIMENSIONS ARE INCHES AND DIMENSIONS IN BRACES ARE METRIC



WALL MOUNTING SLOT USED WITH HANGER BRACKET ASSEMBLY: 03.08888-03

DRAIN OUTLET TUBE
O.D. ϕ .25-IN. (6.4-mm)



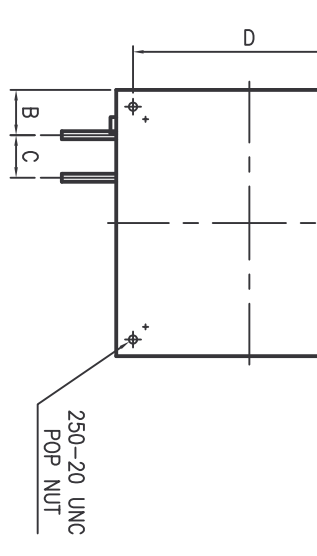
DETAIL A
SCALE 3:1
ON/OFF SWITCH W/RUNNING LAMP

SERVICE :
COMPRESSED AIR

OPERATING CONDITIONS :
RATED INLET AIR PRESSURE - 100 PSIG
MAXIMUM INLET AIR PRESSURE - 250 PSIG
MINIMUM INLET AIR PRESSURE - 30 PSIG
RATED INLET AIR TEMPERATURE - 100 °F
MAXIMUM INLET AIR TEMPERATURE - 113 °F
MINIMUM INLET AIR TEMPERATURE - 40 °F
RATED AMBIENT AIR TEMPERATURE - 100 °F
MAXIMUM AMBIENT AIR TEMPERATURE - 113 °F
MINIMUM AMBIENT AIR TEMPERATURE - 40 °F

SPECIFICATIONS :
ELECTRICALS - 115-1PH-60Hz, 230-1PH-50Hz
CONDENSER TYPE - STATIC CONDENSER
REFRIGERANT - HFC-134a (R-134a)
EXPANSION DEVICE - CONSTANT EXPANSION VALVE
DRAIN TYPE - ELECTRONIC DRAIN

REV.	DESCRIPTION	BY	DATE	APPROVED	UNLESS OTHERWISE SPECIFIED	FILER NO.	SIZE	SCALE	EST. WT.	REV.
					DIMENSIONS ARE IN INCHES	DRAWN BY: MPK	C	NONE		
					TOL. ON FRACTIONS: \pm 1/16"	DATE: 05-03-07				
					TOL. ON DECIMALS: \pm .030" (2 PLACE)	CHECKED BY: JJP				
					TOL. ON DECIMALS: \pm .015" (3 PLACE)	DATE: 05-03-07				
					TOL. ON ANGLES: \pm .5°	APPROVED BY: JRL				
					THIRD ANGLE PROJECTION	DATE: 05-03-07				



Deltech

REFRIGERATED AIR DRYER (STATIC COND)
GENERAL ARRANGEMENT
HG15